

Product Data Sheet

LEAF™ Purified anti-human CD8a

Catalog # / Size: 301018 / 500 µg

Clone: RPA-T8

Isotype: Mouse IgG1, κ

Workshop Number: IV T171

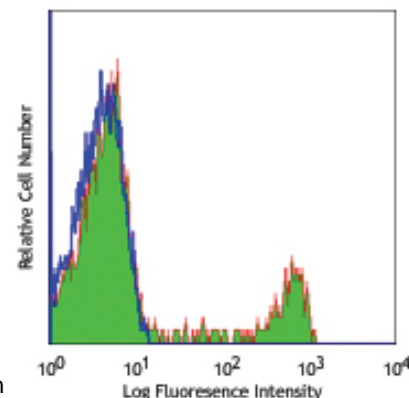
Reactivity: Human, **Cross-Reactivity:** Chimpanzee, Baboon, Cynomolgus, Rhesus, Pigtailed Macaque, Sooty Mangabey

Preparation: The LEAF™ (Low Endotoxin, Azide-Free) antibody was purified by affinity chromatography.

Formulation: 0.2 µm filtered in phosphate-buffered solution, pH 7.2, containing no preservative. Endotoxin level is <0.1 EU/µg of the protein (<0.01 ng/µg of the protein) as determined by the LAL test.

Concentration: 1.0 mg/ml

Storage: The antibody solution should be stored undiluted at 4°C. This LEAF™ solution contains no preservative; handle under aseptic conditions.



Human peripheral blood lymphocytes stained with LEAF™ purified RPA-T8, followed by anti-mouse IgGs FITC

Applications:

Applications: FC - *Quality tested*
 IHC, Costim - *Reported in the literature*
 CyTOF® - *Validated*

Recommended Usage: Each lot of this antibody is quality control tested by immunofluorescent staining with flow cytometric analysis. For immunofluorescent staining, the suggested use of this reagent is ≤2.0 µg per million cells in 100 µl volume or 100 µl of whole blood. It is recommended that the reagent be titrated for optimal performance for each application.

Application Notes: The RPA-T8 antibody does not block the binding of HIT8a antibody to CD8a. Additional reported applications of this antibody (for the relevant formats) include: immunohistochemical staining of paraformaldehyde-fixed frozen sections³ and costimulation of T cell responses⁴. The LEAF™ purified antibody (Endotoxin <0.1 EU/µg, Azide-Free, 0.2 µm filtered) is recommended for functional assays (Cat. No. 301018).

Application References:

- Knapp W, *et al.* Eds. 1989. Leucocyte Typing IV. Oxford University Press. New York.
- Schlossman S, *et al.* Eds. 1995. Leucocyte Typing V. Oxford University Press. New York.
- Mack CL, *et al.* 2004. *Pediatr. Res.* 56:79. (IHC)
- Magidovich E, *et al.* 2007. *P. Natl. Acad. Sci. USA* 104:13022.
- Thakral D, *et al.* 2008. *J. Immunol.* 180:7431. PubMed
- Kmieciak M, *et al.* 2009. *J. Transl. Med.* 7:89. (FC) PubMed
- Thakral D, *et al.* 2008. *J. Immunol.* 180:7431. (FC) PubMed
- Yoshino N, *et al.* 2000. *Exp. Anim. (Tokyo)* 49:97. (FC)
- Rout N, *et al.* 2010. *PLoS One* 5:e9787. (FC)

Description: CD8a is a 32-34 kD type I glycoprotein. It forms a homodimer (CD8a/a) or heterodimer (CD8a/b) with CD8b. CD8, also known as T8 and Leu2, is a member of the immunoglobulin superfamily found on the majority of thymocytes, a subset of peripheral blood T cells, and NK cells (which express almost exclusively CD8a homodimers). CD8 acts as a co-receptor with MHC class I-restricted T cell receptors in antigen recognition and T cell activation, and has been shown to play a role in thymic differentiation. Two domains in CD8a are important for function: the extracellular IgSF domain binds the α₃ domain of MHC class I and the cytoplasmic CXCP motif binds the tyrosine kinase p56 Lck.

Antigen References: 1. Barclay N, *et al.* 1993. The Leucocyte Antigen FactsBook. Academic Press Inc. San Diego.

Related Products:

Product	Clone	Application
LEAF™ Purified anti-human CD3	HIT3a	FC, IP, Activ, IHC
Purified anti-human CD8a	HIT8a	FC, IHC
LEAF™ Purified anti-human CD4	RPA-T4	Block, FC, IHC, CyTOF®
LEAF™ Purified anti-human CD3	UCHT1	FC, Activ, IHC, IP, WB, CyTOF®
LEAF™ Purified Mouse IgG1, κ Isotype Ctrl	MOPC-21	FC, ICFC, WB, IP, ICC, IF, FA
Cell Staining Buffer		FC, ICC, ICFC
RBC Lysis Buffer (10X)		FC, ICFC
Purified anti-human CD56 (NCAM)	MEM-188	FC, IHC, IP, WB



For research use only. Not for diagnostic use. Not for resale. BioLegend will not be held responsible for patent infringement or other violations that may occur with the use of our products.



*These products may be covered by one or more Limited Use Label Licenses (see the BioLegend Catalog or our website, www.biolegend.com/ordering#license). BioLegend products may not be transferred to third parties, resold, modified for resale, or used to manufacture commercial products, reverse engineer functionally similar materials, or to provide a service to third parties without written approval of BioLegend. By use of these products you accept the terms and conditions of all applicable Limited Use Label Licenses. Unless otherwise indicated, these products are for research use only and are not intended for human or animal diagnostic, therapeutic or commercial use.