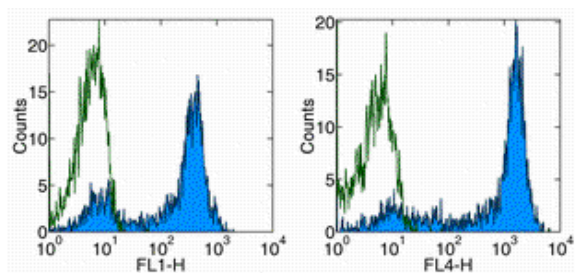


Anti-Human CD62L (L-Selectin) Functional Grade Purified

Catalog Number: 16-0629

Also Known As: LECAM-1, Leu-8

RUO: For Research Use Only. Not for use in diagnostic procedures.



Staining of normal human peripheral blood cells with Anti-Human CD62L (L-Selectin) FITC (left) or APC (right). Appropriate isotype controls were used (open histogram). Cells in the lymphocyte population were used for analysis.

Product Information

Contents: Anti-Human CD62L (L-Selectin) Functional Grade Purified

REF **Catalog Number:** 16-0629

Clone: DREG-56 (DREG56)

Concentration: 1 mg/mL

Host/Isotype: Mouse IgG1, kappa

HLDA Workshop: V S056

Handling Conditions: Use in sterile environment.

Endotoxin Level: Less than 0.001 ng/ug antibody, as determined by the LAL assay.

Formulation: aqueous buffer, no sodium azide



Temperature Limitation: Store at 2-8°C.



Batch Code: Refer to Vial



Use By: Refer to Vial

Description

The DREG-56 monoclonal antibody reacts with human CD62L, a 76 kDa member of the selectin family. CD62L is expressed by neutrophils, monocytes, and subsets of T, B, and NK cells and binds a number of glycosylated, fucosylated, sulfated sialylated glycoproteins including CD34, glycamin-1 and MAdCAM-1. These interactions mediate rolling of lymphocytes on activated endothelium at the sites of inflammation and homing of cells to the high endothelial venules (HEV) of peripheral lymphoid tissues.

Applications Reported

The DREG-56 (DREG56) antibody has been reported for use in flow cytometric analysis. DREG-56 has also been reported in inhibition of binding to HEV.

Applications Tested

The DREG-56 (DREG56) antibody has been tested by flow cytometric analysis of human peripheral blood leukocytes. This can be used at less than or equal to 1 µg per test. A test is defined as the amount (µg) of antibody that will stain a cell sample in a final volume of 100 µL. Cell number should be determined empirically but can range from 10⁵ to 10⁸ cells/test. It is recommended that the antibody be carefully titrated for optimal performance in the assay of interest.

References

Jutila MA, Kurk S, Jackiw L, Knibbs RN, Stoolman LM. J Immunol. L-selectin serves as an E-selectin ligand on cultured human T lymphoblasts. 2002 Aug 15;169(4):1768-73. (**Dreg-56**, WB, PubMed)

Schlossman, S., L. Bloumsell, et al. eds. 1995. Leucocyte Typing V: White Cell Differentiation Antigens. Oxford University Press. New York.

Kishimoto TK, Jutila MA, Butcher EC. Identification of a human peripheral lymph node homing receptor: a rapidly down-regulated adhesion molecule. Proc Natl Acad Sci U S A. 1990 Mar;87(6):2244-8. (**Dreg-56**, mAb generation, WB, FC, PubMed)

Related Products

16-4714 Mouse IgG1 K Isotype Control Functional Grade Purified (P3.6.2.1)

Not for further distribution without written consent.

Copyright © 2000-2010 eBioscience, Inc.

Tel: 888.999.1371 or 858.642.2058 • Fax: 858.642.2046 • www.eBioscience.com • info@eBioscience.com