

Product Data Sheet

FITC anti-human CD7

Catalog # / Size: 343103 / 25 tests
343104 / 100 tests

Clone: CD7-6B7

Isotype: Mouse IgG2a, κ

Workshop Number: IV T-164

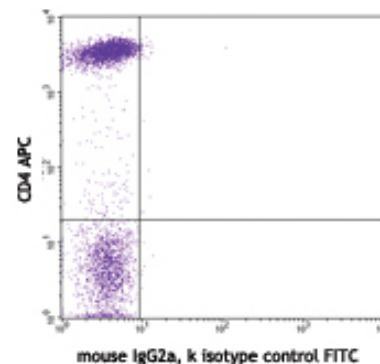
Immunogen: KG1a cell line

Reactivity: Human

Preparation: The antibody was purified by affinity chromatography, and conjugated with FITC under optimal conditions. The solution is free of unconjugated FITC.

Formulation: Phosphate-buffered solution, pH 7.2, containing 0.09% sodium azide and 0.2% (w/v) BSA (origin USA).

Storage: The antibody solution should be stored undiluted at 4°C and protected from prolonged exposure to light. **Do not freeze.**



Human peripheral blood lymphocytes stained with mouse IgG2a, κ (MOPC-173) FITC and CD4 APC

Applications:

Applications: FC - Quality tested

Recommended Usage: Each lot of this antibody is quality control tested by immunofluorescent staining with flow cytometric analysis. **Test size products are transitioning from 20 μ l to 5 μ l per test.** Please check your vial or your CoA to find the suggested use of this reagent per million cells in 100 μ l staining volume or per 100 μ l of whole blood. It is recommended that the reagent be titrated for optimal performance for each application. Read more at www.biolegend.com/testsize regarding the test size change.

Application References: 1. Knapp W, et al. 1989. *Leucocyte Typing IV: White Cell Differentiation Antigens*. Oxford University Press.

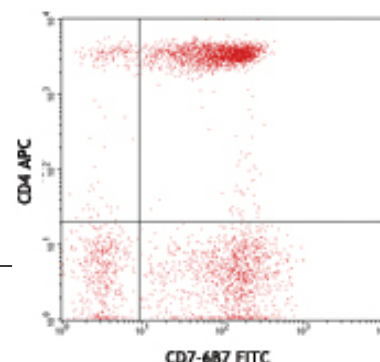
Description: CD7 is a 40 kD type I transmembrane glycoprotein also known as gp40. It is a member of the immunoglobulin superfamily found on T cells, NK cells, thymocytes, hematopoietic progenitors, and monocytes (weakly). CD7 is also expressed on acute lymphocytic leukemia (ALL) and some acute myeloid leukemia (AML) cells. CD7 crosslinking induces a calcium flux in T lymphocytes, presumably as a result of cytoplasmic domain association with PI3-kinase. CD7 costimulation can induce cytokine secretion and modulate cellular adhesion.

Antigen References: 1. Barclay N, et al. 1993. *The Leucocyte Antigen FactsBook*. Academic Press Inc. San Diego.
2. Stillwell R, et al. 2001. *Immunol. Res.* 24:31.
3. Rabinowich H, et al. 1994. *J. Immunol.* 152:517.

Related Products: **Product**
FITC Mouse IgG2a, κ Isotype Ctrl
Cell Staining Buffer
RBC Lysis Buffer (10X)
Human TruStain FcX™ (Fc Receptor Blocking Solution)

Clone
MOPC-173

Application
FC, ICFC
FC, ICC, ICFC
FC, ICFC
FC, ICC, ICFC



Human peripheral blood lymphocytes stained with CD7-6B7 FITC and CD4 APC



For research use only. Not for diagnostic use. Not for resale. BioLegend will not be held responsible for patent infringement or other violations that may occur with the use of our products.



*These products may be covered by one or more Limited Use Label Licenses (see the BioLegend Catalog or our website, www.biolegend.com/ordering#license). BioLegend products may not be transferred to third parties, resold, modified for resale, or used to manufacture commercial products, reverse engineer functionally similar materials, or to provide a service to third parties without written approval of BioLegend. By use of these products you accept the terms and conditions of all applicable Limited Use Label Licenses. Unless otherwise indicated, these products are for research use only and are not intended for human or animal diagnostic, therapeutic or commercial use.