

Product Data Sheet

Purified anti-human CD6

Catalog # / Size: 313902 / 100 µg

Clone: BL-CD6

Isotype: Mouse IgG1, κ

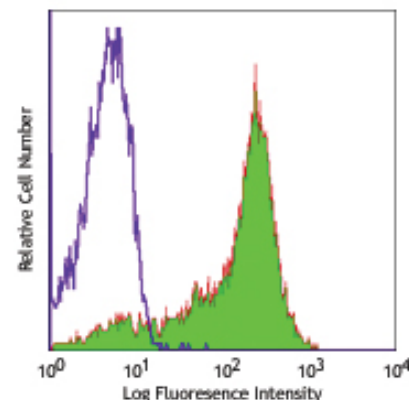
Reactivity: Human

Preparation: The antibody was purified by affinity chromatography.

Formulation: Phosphate-buffered solution, pH 7.2, containing 0.09% sodium azide.

Concentration: 0.5 mg/ml

Storage: The antibody solution should be stored undiluted at 4°C.



Human peripheral blood lymphocytes stained with purified BL-CD6, followed by anti-mouse IgG FITC

Applications:

Applications: FC - *Quality tested*

Recommended Usage: Each lot of this antibody is quality control tested by immunofluorescent staining with flow cytometric analysis. For immunofluorescent staining, the suggested use of this reagent is ≤0.5 µg per million cells in 100 µl volume. It is recommended that the reagent be titrated for optimal performance for each application.

Description: CD6 is a 100-130 kD single chain transmembrane glycoprotein also known as T12. It is a member of the scavenger receptor superfamily found on T and B cell subsets, thymocytes, and acute lymphocytic leukemia cells (ALL). CD6, interacting with its ligand CD166 (also known as ALCAM), is involved in T cell development and activation, as well as thymocyte adhesion.

Antigen References: 1. Aruffo A, *et al.* 1997. *Immunol. Today* 18:498.

Related Products:

Product
 Purified Mouse IgG1, κ Isotype Ctrl
 FITC Goat anti-mouse IgG (minimal x-reactivity)
 PE Goat anti-mouse IgG (minimal x-reactivity)
 Cell Staining Buffer
 RBC Lysis Buffer (10X)

Clone
 MOPC-21
 Poly4053
 Poly4053

Application
 FC, ICFC, ICC, IF, IHC, IP, WB
 FC
 FC
 FC, ICC, ICFC
 FC, ICFC



For research use only. Not for diagnostic use. Not for resale. BioLegend will not be held responsible for patent infringement or other violations that may occur with the use of our products.



*These products may be covered by one or more Limited Use Label Licenses (see the BioLegend Catalog or our website, www.biollegend.com/ordering#license). BioLegend products may not be transferred to third parties, resold, modified for resale, or used to manufacture commercial products, reverse engineer functionally similar materials, or to provide a service to third parties without written approval of BioLegend. By use of these products you accept the terms and conditions of all applicable Limited Use Label Licenses. Unless otherwise indicated, these products are for research use only and are not intended for human or animal diagnostic, therapeutic or commercial use.