

Product Data Sheet

PE/Cy5 anti-human CD4

Catalog # / Size: 300509 / 25 tests
300510 / 100 tests

Clone: RPA-T4

Isotype: Mouse IgG1, κ

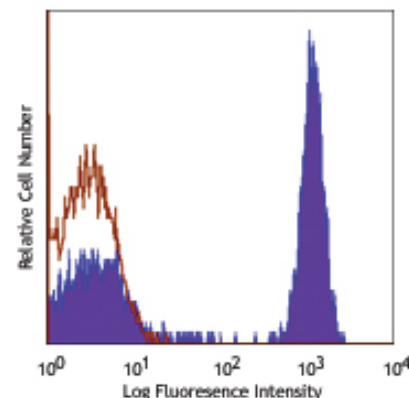
Workshop Number: IV T114

Reactivity: Human, **Cross-Reactivity:** Chimpanzee

Preparation: The antibody was purified by affinity chromatography, and conjugated with PE/Cy5 under optimal conditions. The solution is free of unconjugated PE/Cy5 and unconjugated antibody.

Formulation: Phosphate-buffered solution, pH 7.2, containing 0.09% sodium azide and 0.2% (w/v) BSA (origin USA).

Storage: The antibody solution should be stored undiluted at 4°C and protected from prolonged exposure to light. **Do not freeze.**



Human peripheral blood lymphocytes stained with RPA-T4 PE/Cy5

Applications:

Applications: FC - Quality tested

Recommended Usage: Each lot of this antibody is quality control tested by immunofluorescent staining with flow cytometric analysis. **Test size products are transitioning from 20 μ l to 5 μ l per test.** Please check your vial or your CoA to find the suggested use of this reagent per million cells in 100 μ l staining volume or per 100 μ l of whole blood. It is recommended that the reagent be titrated for optimal performance for each application. Read more at www.biolegend.com/testsize regarding the test size change.

Application Notes: The RPA-T4 antibody binds to the D1 domain of CD4 (CDR1 and CDR3 epitopes) and can block HIV gp120 binding and inhibit syncytia formation. Additional reported applications (for the relevant formats) include: immunohistochemistry^{3,4,5} of acetone-fixed frozen sections, and blocking of T cell activation^{1,2}. The LEAF™ purified antibody (Endotoxin <0.1 EU/ μ g, Azide-Free, 0.2 μ m filtered) is recommended for functional assays (Cat. No. 300516).

Cy3, Cy5, Cy5.5 and Cy7 are subject to proprietary rights of GE Healthcare Bio-Sciences Corp. and Carnegie Mellon University and made and sold under license from GE Healthcare Bio-Sciences Corp. Sale of this product is licensed for research use only.

- Application References:**
- Knapp W, *et al.* 1989. Leucocyte Typing IV. Oxford University Press. New York. (Activ)
 - Moir S, *et al.* 1999. *J. Virol.* 73:7972. (Activ)
 - Deng MC, *et al.* 1995. *Circulation* 91:1647. (IHC)
 - Friedman T, *et al.* 1999. *J. Immunol.* 162:5256. (IHC)
 - Mack CL, *et al.* 2004. *Pediatr. Res.* 56:79. (IHC)
 - Lan RY, *et al.* 2006. *Hepatology* 43:729.
 - Zenaro E, *et al.* 2009. *J. Leukoc. Biol.* 86:1393. (FC) PubMed
 - Yoshino N, *et al.* 2000. *Exp. Anim. (Tokyo)* 49:97. (FC)

Description: CD4, also known as T4, is a 55 kD single-chain type I transmembrane glycoprotein expressed on most thymocytes, a subset of T cells, and monocytes/macrophages. CD4, a member of the Ig superfamily, recognizes antigens associated with MHC class II molecules, and participates in cell-cell interactions, thymic differentiation, and signal transduction. CD4 acts as a primary receptor for HIV, binding to HIV gp120. CD4 has also been shown to interact with IL-16.

- Antigen References:**
- Center D, *et al.* 1996. *Immunol. Today* 17:476.
 - Gaubin M, *et al.* 1996. *Eur. J. Clin. Chem. Clin. Biochem.* 34:723.

Related Products:	Product	Clone	Application
	PE/Cy5 anti-human CD184 (CXCR4)	12G5	FC
	PE/Cy5 anti-human CD25	BC96	FC
	PE/Cy5 anti-human CD3	HIT3a	FC
	PE/Cy5 anti-human CD8a	HIT8a	FC
	PE/Cy5 anti-human CD8a	RPA-T8	FC
	PE/Cy5 anti-human CD3	UCHT1	FC
	PE/Cy5 Mouse IgG1, κ Isotype Ctrl	MOPC-21	FC, ICFC
	Cell Staining Buffer		FC, ICC, ICFC
	RBC Lysis Buffer (10X)		FC, ICFC
	PE anti-human CD184 (CXCR4)	4G10	FC
	Human TruStain FcX™ (Fc Receptor Blocking Solution)		FC, ICC, ICFC



For research use only. Not for diagnostic use. Not for resale. BioLegend will not be held responsible for patent infringement or other violations that may occur with the use of our products.



*These products may be covered by one or more Limited Use Label Licenses (see the BioLegend Catalog or our website, www.biolegend.com/ordering#license). BioLegend products may not be transferred to third parties, resold, modified for resale, or used to manufacture commercial products, reverse engineer functionally similar materials, or to provide a service to third parties without written approval of BioLegend. By use of these products you accept the terms and conditions of all applicable Limited Use Label Licenses. Unless otherwise indicated, these products are for research use only and are not intended for human or animal diagnostic, therapeutic or commercial use.