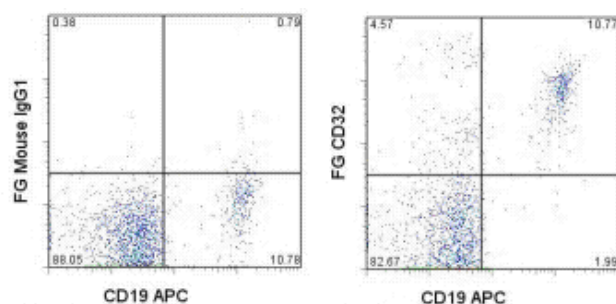


Anti-Human CD32 Functional Grade Purified

Catalog Number: 16-0329

Also Known As: Low Affinity IgG Receptor 2a, FcGR2a, IGFR2

RUO: For Research Use Only. Not for use in diagnostic procedures.



Staining of normal human peripheral blood cells with Anti-Human CD19 APC (cat. 17-0199) and 0.5 ug of Mouse IgG1 K Isotype Control Functional Grade Purified (cat. 16-4714) (left) or 0.5 ug of Anti-Human CD32 Functional Grade Purified (right) followed by F(ab')₂ Anti-Mouse IgG PE (cat. 12-4010). Cells in the lymphocyte gate were used for analysis.

Product Information

Contents: Anti-Human CD32 Functional Grade Purified

REF **Catalog Number:** 16-0329

Clone: 6C4 (CD32)

Concentration: 1 mg/mL

Host/Isotype: Mouse IgG1, kappa


Handling Conditions: Use in sterile environment.

Endotoxin Level: Less than 0.001 ng/ug antibody, as determined by the LAL assay.

Formulation: aqueous buffer, no sodium azide

 **Temperature Limitation:** Store at 2-8°C.

 **Batch Code:** Refer to Vial

 **Use By:** Refer to Vial

Description

This 6C4 monoclonal antibody reacts with human CD32 (also known as Fc gammaRII). This antibody recognizes two isoforms of the receptor, Fc gammaRIIA and Fc gammaRIIB. These 40-kDa polymorphic transmembrane glycoproteins are expressed on B cells, granulocytes, monocytes, macrophages, and platelets. Moreover, these receptors are detected on natural killer cells. CD32 enables interaction between Fc gammaRII-expressing cells and opsonized antigen or IgG-containing immune complexes. Both receptors exhibit low affinity towards IgG and play a role in inflammation and autoimmune disease. This clone has been reported to inhibit Ig binding in a rosette blocking assay.

Applications Tested

This 6C4 (CD32) antibody has been tested by flow cytometric analysis of normal human peripheral blood cells. This can be used at less than or equal to 1 µg per test. A test is defined as the amount (µg) of antibody that will stain a cell sample in a final volume of 100 µL. Cell number should be determined empirically but can range from 10⁵ to 10⁸ cells/test. It is recommended that the antibody be carefully titrated for optimal performance in the assay of interest.

References

Fossati G, Bucknall RC, and Edwards SW. Fc gamma receptors in autoimmune diseases. *Eur. J. Clin. Invest.* 2001 31(9):821-831.

Vely F, Gruel N, Moncuit J, Cochet O, Rouard H, Dare S, Galon J, Sautes C, Fridman WH, Teillaud JL. A new set of monoclonal antibodies against human Fc gamma RII (CD32) and Fc gamma RIII (CD16): characterization and use in various assays. *Hybridoma* 1997 Dec; 16(6):519-28. (6C4, FC, FA (blocking), Pubmed)

Related Products

00-4222 Flow Cytometry Staining Buffer

00-4300 10X RBC Lysis Buffer (Multi-species)

12-4010 F(ab')₂ Anti-Mouse IgG PE (polyclonal)

16-4714 Mouse IgG1 K Isotype Control Functional Grade Purified (P3.6.2.1)

17-0199 Anti-Human CD19 APC (HIB19)

