

# Product Data Sheet

## FITC anti-human CD4

**Catalog # / Size:** 344603 / 25 tests  
 344604 / 100 tests

**Clone:** SK3

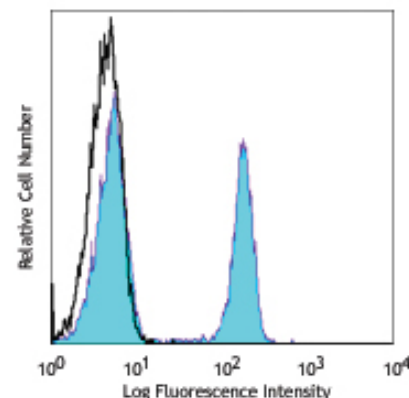
**Isotype:** Mouse IgG1,  $\kappa$

**Reactivity:** Human

**Preparation:** The antibody was purified by affinity chromatography, and conjugated with FITC under optimal conditions. The solution is free of unconjugated FITC.

**Formulation:** Phosphate-buffered solution, pH 7.2, containing 0.09% sodium azide and 0.2% (w/v) BSA (origin USA).

**Storage:** The antibody solution should be stored undiluted at 4°C and protected from prolonged exposure to light. **Do not freeze.**



Human peripheral blood lymphocytes stained with SK3 FITC

## Applications:

**Applications:** FC - Quality tested

**Recommended Usage:** Each lot of this antibody is quality control tested by immunofluorescent staining with flow cytometric analysis. **Test size products are transitioning from 20  $\mu$ l to 5  $\mu$ l per test.** Please check your vial or your CoA to find the suggested use of this reagent per million cells in 100  $\mu$ l staining volume or per 100  $\mu$ l of whole blood. It is recommended that the reagent be titrated for optimal performance for each application. Read more at [www.biolegend.com/testsize](http://www.biolegend.com/testsize) regarding the test size change.

**Application References:**

1. Evans RL, *et al.* 1981. *Immunol.* 78:544
2. Arno A *et al.* 1999. *J. Infect. Dis.* 180:56
3. Muech M, *et al.* 1997. *Blood* 89:1364

**Description:** CD4, also known as T4, is a 55 kD single-chain type I transmembrane glycoprotein expressed on most thymocytes, a subset of T cells, and monocytes/macrophages. CD4, a member of the Ig superfamily, recognizes antigens associated with MHC class II molecules and participates in cell-cell interactions, thymic differentiation, and signal transduction. CD4 acts as a primary receptor for HIV, binding to HIV gp120. CD4 has also been shown to interact with IL-16.

**Antigen References:**

1. Center D *et al.* 1996. *Immunol. Today* 17:476.
2. Gaubin M *et al.* 1996. *Eur. J. Clin. Chem. Clin. Biochem.* 34:723.

### Related Products:

**Product**  
 FITC Mouse IgG1,  $\kappa$  Isotype Ctrl  
 Cell Staining Buffer  
 RBC Lysis Buffer (10X)  
 Human TruStain FcX™ (Fc Receptor Blocking Solution)

**Clone**  
 MOPC-21

### Application

FC, ICFC  
 FC, ICC, ICFC  
 FC, ICFC  
 FC, ICC, ICFC



For research use only. Not for diagnostic use. Not for resale. BioLegend will not be held responsible for patent infringement or other violations that may occur with the use of our products.



\*These products may be covered by one or more Limited Use Label Licenses (see the BioLegend Catalog or our website, [www.biolegend.com/ordering#license](http://www.biolegend.com/ordering#license)). BioLegend products may not be transferred to third parties, resold, modified for resale, or used to manufacture commercial products, reverse engineer functionally similar materials, or to provide a service to third parties without written approval of BioLegend. By use of these products you accept the terms and conditions of all applicable Limited Use Label Licenses. Unless otherwise indicated, these products are for research use only and are not intended for human or animal diagnostic, therapeutic or commercial use.