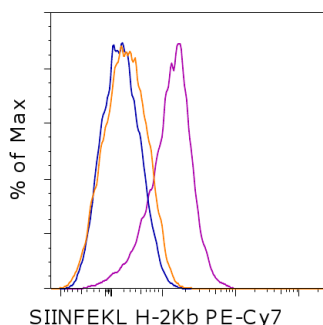


Anti-Mouse OVA257-264 (SIINFEKL) peptide bound to H-2Kb PE-Cyanine7

Catalog Number: 25-5743

Also known as: H-2Kb-SIINFEKL, OVA-Kb

RUO: For Research Use Only. Not for use in diagnostic procedures.



Staining of SIINFEKL-pulsed C57BL/6 splenocytes with 0.06 ug of Mouse IgG1 K Isotype Control PE-Cyanine7 (cat. 25-4714) (blue histogram) or 0.06 ug of Anti-Mouse OVA257-264 (SIINFEKL) peptide bound to H-2Kb PE-Cy7 (purple histogram). Orange histogram represents staining of unpulsed cells with 0.06 ug of Anti-Mouse OVA257-264 (SIINFEKL) peptide bound to H-2Kb PE-Cyanine7. Total viable cells were used for analysis.

Product Information

Contents: Anti-Mouse OVA257-264 (SIINFEKL) peptide bound to H-2Kb PE-Cyanine7

Catalog Number: 25-5743

Clone: eBio25-D1.16 (25-D1.16)

Concentration: 0.2 mg/mL

Host/Isotype: Mouse IgG1, kappa

Formulation: aqueous buffer, 0.09% sodium azide, may contain carrier protein/stabilizer

Temperature Limitation: Store at 2-8°C. Do not freeze. Light-sensitive material. This tandem dye is sensitive to photo-induced oxidation. Protect this vial from light during storage, handling & experimental procedures.

Batch Code: Refer to vial

Use By: Refer to vial

Contains sodium azide



LOT



Description

The 25-D1.16 monoclonal antibody reacts with the ovalbumin-derived peptide SIINFEKL bound to H-2Kb of MHC class I, but not with unbound H-2Kb, or H-2Kb bound with an irrelevant peptide. This antibody has proven to be very useful tracking the quantity and localization of these specific antigen-presenting cells (APC) in vivo.

Applications Reported

This eBio25-D1.16 (25-D1.16) antibody has been reported for use in flow cytometric analysis.

Applications Tested

This eBio25-D1.16 (25-D1.16) antibody has been tested by flow cytometric analysis of SIINFEKL-pulsed C57BL/6 splenocytes. This can be used at less than or equal to 0.125 µg per test. A test is defined as the amount (µg) of antibody that will stain a cell sample in a final volume of 100 µL. Cell number should be determined empirically but can range from 10⁵ to 10⁸ cells/test. It is recommended that the antibody be carefully titrated for optimal performance in the assay of interest.

Light sensitivity: This tandem dye is sensitive photo-induced oxidation. Please protect this vial and stained samples from light.

Fixation: Samples can be stored in IC Fixation Buffer (cat. 00-8222) (100 uL cell sample + 100 uL IC Fixation Buffer) or 1-step Fix/Lyse Solution (cat. 00-5333) for up to 3 days in the dark at 4°C with minimal impact on brightness and FRET efficiency/compensation. Some generalizations regarding fluorophore performance after fixation can be made, but clone specific performance should be determined empirically.

Not for further distribution without written consent.

Copyright © 2000-2012 eBioscience, Inc.

Tel: 888.999.1371 or 858.642.2058 • Fax: 858.642.2046 • www.ebioscience.com • info@ebioscience.com

Anti-Mouse OVA257-264 (SIINFEKL) peptide bound to H-2Kb PE-Cyanine7

Catalog Number: 25-5743

Also known as: H-2Kb-SIINFEKL, OVA-Kb

RUO: For Research Use Only. Not for use in diagnostic procedures.

References

Porgador A, Yewdell JW, Deng Y, Bennink JR, Germain RN. Localization, quantitation, and in situ detection of specific peptide-MHC class I complexes using a monoclonal antibody. *Immunity*. 1997 Jun;6(6):715-26. (25-D1.16, mAb development, PubMed)

Messaoudi I, LeMaout J, Nikolic-Zugic J. The mode of ligand recognition by two peptide:MHC class I-specific monoclonal antibodies. *J Immunol*. 1999 Sep 15;163(6):3286-94.

Ackerman AL, Kyritsis C, Tampé R, Cresswell P. Access of soluble antigens to the endoplasmic reticulum can explain cross-presentation by dendritic cells. *Nat Immunol*. 2005 Jan;6(1):107-13.

Berwin B, Hart JP, Rice S, Gass C, Pizzo SV, Post SR, Nicchitta CV. Scavenger receptor-A mediates gp96/GRP94 and calreticulin internalization by antigen-presenting cells. *EMBO J*. 2003 Nov 17;22(22):6127-36.

Related Products

25-4714 Mouse IgG1 K Isotype Control PE-Cyanine7 (P3.6.2.8.1)

Legal

FOR NON-COMMERCIAL RESEARCH USE ONLY. NOT FOR THERAPEUTIC OR IN VIVO APPLICATIONS. OTHER USE NEEDS LICENSE FROM GE HEALTHCARE BIO-SCIENCES CORP. UNDER U.S. PATENT FOR NON-COMMERCIAL RESEARCH USE ONLY. NOT FOR THERAPEUTIC OR IN VIVO APPLICATIONS. OTHER USE NEEDS LICENSE FROM GE HEALTHCARE BIO-SCIENCES CORP. UNDER U.S. PATENT # 5,268,486, 5,569,587 AND 5,627,027 AND FOREIGN EQUIVALENTS AND PENDING APPLICATIONS. THIS MATERIAL IS SUBJECT TO PROPRIETARY RIGHTS OF GE HEALTHCARE BIO-SCIENCES CORP. AND CARNEGIE MELLON UNIVERSITY AND MADE AND SOLD UNDER LICENSE FROM GE HEALTHCARE BIO-SCIENCES CORP. THIS PRODUCT IS LICENSED FOR SALE ONLY FOR RESEARCH. IT IS NOT LICENSED FOR ANY OTHER USE. THERE IS NO IMPLIED LICENSE HEREUNDER FOR ANY COMMERCIAL USE. COMMERCIAL USE shall include: 1. sale, lease, license or other transfer of the material or any material derived or produced from it; 2. sale, lease, license or other grant of rights to use this Material or any material derived or produced from it; 3. use of this material to perform services for a fee for third parties. IF YOU REQUIRE A COMMERCIAL LICENSE TO USE THIS MATERIAL AND DO NOT HAVE ONE, RETURN THIS MATERIAL, UNOPENED TO EBIOSCIENCE, INC. 10255 SCIENCE CENTER DRIVE, SAN DIEGO, CALIFORNIA 92121 USA AND ANY MONEY PAID FOR THE MATERIAL WILL BE REFUNDED.

Not for further distribution without written consent.

Copyright © 2000-2012 eBioscience, Inc.

Tel: 888.999.1371 or 858.642.2058 • Fax: 858.642.2046 • www.ebioscience.com •
info@ebioscience.com