

Purified anti-human CD3

Catalog # / Size: 344801 / 25 µg
344802 / 100 µg

Clone: SK7

Isotype: Mouse IgG1, κ

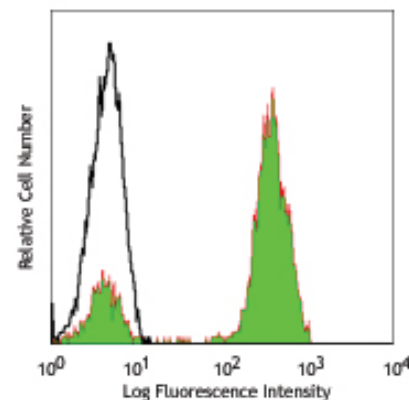
Reactivity: Human, **Cross-Reactivity:** Chimpanzee

Preparation: The antibody was purified by affinity chromatography.

Formulation: Phosphate-buffered solution, pH 7.2, containing 0.09% sodium azide.

Concentration: 0.5 mg/ml

Storage: The antibody solution should be stored undiluted at 4°C.



Human peripheral blood lymphocytes stained with SK7 FITC.

Applications:

Applications: FC - *Quality tested*
IHC, IF, WB - *Reported in the literature*

Recommended Usage: Each lot of this antibody is quality control tested by immunofluorescent staining with flow cytometric analysis. For immunofluorescent staining, the suggested use of this reagent is ≤0.25 µg per million cells in 100 µl volume. It is recommended that the reagent be titrated for optimal performance for each application.

Application Notes: Additional reported application (for the relevant formats) include: immunohistochemical staining of frozen tissue sections^{4,5,8}, immunofluorescent staining⁶, and Western blotting³.

Application References:

1. Kan EA, *et al.* 1983. *J. Immunol.* 131:536.
2. Wood GS, *et al.* 1985. *Am. J. Pathol.* 120:371.
3. Van Dongen JJM, *et al.* 1988. *Blood* 71:603. (WB)
4. Haringman JJ, *et al.* 2005. *Arthritis Res. Ther.* 7:R862. (IHC)
5. Carbone A, *et al.* 1999. *Blood* 93:2319. (IHC)
6. Goval JJ, *et al.* 2006. *J. Histochem. Cytochem.* 54:75. (IF)
7. Rutjens E, *et al.* 2007. *J. Immunol.* 178:1702.
8. Kap Y, *et al.* 2009. *J. Histochem. Cytochem.* 57:1159. (IHC)
9. Yoshino N, *et al.* 2000. *Exp. Anim. (Tokyo)* 49:97. (FC)

Description: CD3ε is a 20 kD chain of the CD3/T-cell receptor (TCR) complex which is composed of two CD3ε, one CD3γ, one CD3δ, one CD3ζ (CD247), and a T-cell receptor (α/β or γ/δ) heterodimer. It is found on all mature T lymphocytes, NK-T cells, and some thymocytes. CD3, also known as T3, is a member of the immunoglobulin superfamily that plays a role in antigen recognition, signal transduction, and T cell activation.

Antigen References:

1. Barclay N, *et al.* 1993. *The Leucocyte FactsBook.* Academic Press. San Diego.
2. Beverly P, *et al.* 1981. *Eur. J. Immunol.* 11:329.
3. Lanier L, *et al.* 1986. *J. Immunol.* 137:2501.

Related Products:

Product	Clone	Application
Purified Mouse IgG1, κ Isotype Ctrl	MOPC-21	FC, ICFC, ICC, IF, IHC, IP, WB
Cell Staining Buffer		FC, ICC, ICFC
RBC Lysis Buffer (10X)		FC, ICFC



For research use only. Not for diagnostic use. Not for resale. BioLegend will not be held responsible for patent infringement or other violations that may occur with the use of our products.



*These products may be covered by one or more Limited Use Label Licenses (see the BioLegend Catalog or our website, www.biolegend.com/ordering#license). BioLegend products may not be transferred to third parties, resold, modified for resale, or used to manufacture commercial products, reverse engineer functionally similar materials, or to provide a service to third parties without written approval of BioLegend. By use of these products you accept the terms and conditions of all applicable Limited Use Label Licenses. Unless otherwise indicated, these products are for research use only and are not intended for human or animal diagnostic, therapeutic or commercial use.