

# Product Data Sheet

## Pacific Blue™ anti-human CD1c

**Catalog # / Size:** 331507 / 25 µg  
331508 / 100 µg

**Clone:** L161

**Isotype:** Mouse IgG1, κ

**Workshop Number:** V T-CD01.18

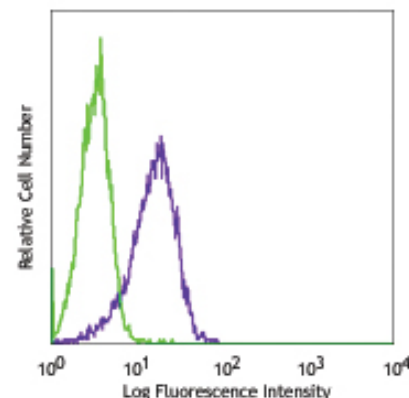
**Reactivity:** Human

**Preparation:** The antibody was purified by affinity chromatography, and conjugated with Pacific Blue™ under optimal conditions. The solution is free of unconjugated Pacific Blue™.

**Formulation:** Phosphate-buffered solution, pH 7.2, containing 0.09% sodium azide.

**Concentration:** 0.5 mg/ml

**Storage:** The antibody solution should be stored undiluted at 4°C and protected from prolonged exposure to light. **Do not freeze.**



Human T lymphoblastic leukemia cell line, Molt-4, stained with L161 Pacific Blue™

## Applications:

**Applications:** FC - This application has been Quality tested

**Recommended Usage:** This reagent is developed for immunofluorescent staining for flow cytometric analysis, the suggested use of this reagent is ≤ 2.0 µg per 10<sup>6</sup> cells in 100 µl volume or 100 µl of whole blood. It is highly recommended that the reagent be titrated for optimal performance for each application.

\* Pacific Blue™ has a maximum emission of 455 nm when it is excited at 405 nm. Prior to using Pacific Blue™ conjugate for flow cytometric analysis, please verify your flow cytometer's capability of exciting and detecting the fluorochrome.

\*\* Pacific Blue™ is a registered trademark of Molecular Probes, Inc. Pacific Blue™ dye antibody conjugates are sold under license from Molecular Probes, Inc. for research use only, except for use in combination with microarrays and high content screening, and are covered by pending and issued patents.

**Application Notes:** Additional reported applications (for the relevant formats) include: immunocytochemical staining<sup>1</sup>.

**Application References:**

1. M. del Salamone C, *et al.* 2001. *J. Leukoc. Biol.* 70:567.
2. de Fraissinette A, *et al.* 1988. *Exp. Hematol.* 16:764.
3. Dutertre CA, *et al.* 2012. *Blood.* 120:2259. PubMed.

**Description:** CD1c, also known as R7 or M241, is a 43 kD member of the five CD1 antigens (CD1a-e) in human. The CD1 molecules are type I glycoprotein with structural similarities to MHC class I and a non-covalent associated with β<sub>2</sub>-microglobulin, belonging to Ig superfamily. CD1c is expressed on cortical thymocytes, Langerhans cells, dendritic cells, and a subset of B cells. It has been reported that CD1c is also expressed on mature T cells with tightly regulated manner. The function of CD1c is involved in antigen-presentation of glycolipids. It may also act in T cells as an immune regulatory molecule.

**Antigen References:**

1. Fainboim LM and del C. Salamone. 2002. *J. Biol. Reg. Homeos. Ag.* 16:125.
2. M. del Salamone C, *et al.* 2001. *J. Leukocyte Biol.* 70:567.
3. Zola H, *et al.* Eds. 2007. *Leukocyte and Stromal Cell Molecules: The CD Markers.* P42.

### Related Products:

Pacific Blue™ Mouse IgG1, κ Isotype Ctrl

Cell Staining Buffer

RBC Lysis Buffer (10X)

Human TruStain FcX™ (Fc Receptor Blocking Solution)

**Clone**  
MOPC-21

**Application**  
FC, ICFC  
FC, ICC, ICFC  
FC, ICFC  
FC, ICC, ICFC



For research use only. Not for diagnostic use. Not for resale. BioLegend will not be held responsible for patent infringement or other violations that may occur with the use of our products.



\*These products may be covered by one or more Limited Use Label Licenses (see the BioLegend Catalog or our website, [www.biollegend.com/ordering#license](http://www.biollegend.com/ordering#license)). BioLegend products may not be transferred to third parties, resold, modified for resale, or used to manufacture commercial products, reverse engineer functionally similar materials, or to provide a service to third parties without written approval of BioLegend. By use of these products you accept the terms and conditions of all applicable Limited Use Label Licenses. Unless otherwise indicated, these products are for research use only and are not intended for human or animal diagnostic, therapeutic or commercial use.