

Product Data Sheet

Purified anti-human CD1c

Catalog # / Size: 331501 / 25 µg
331502 / 100 µg

Clone: L161

Isotype: Mouse IgG1, κ

Workshop Number: V T-CD01.18

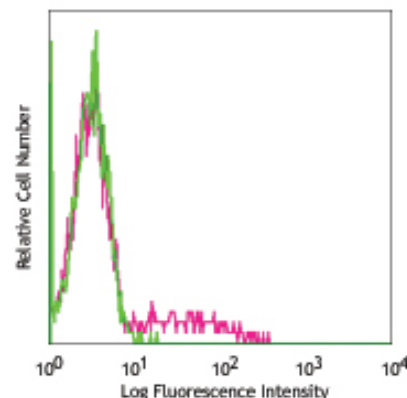
Reactivity: Human

Preparation: The antibody was purified by affinity chromatography.

Formulation: Phosphate-buffered solution, pH 7.2, containing 0.09% sodium azide.

Concentration: 0.5 mg/ml

Storage: The antibody solution should be stored undiluted at 4°C.



Human peripheral blood lymphocytes stained with purified L161, followed by anti-mouse IgG FITC

Applications:

Applications: FC - Quality tested

Recommended Usage: Each lot of this antibody is quality control tested by immunofluorescent staining with flow cytometric analysis. For immunofluorescent staining, the suggested use of this reagent is ≤0.5 µg per million cells in 100 µl volume. It is recommended that the reagent be titrated for optimal performance for each application.

Application Notes: Additional reported applications (for the relevant formats) include: immunocytochemical staining¹.

Application References:

1. M. del Salamone C, *et al.* 2001. *J. Leukoc. Biol.* 70:567.
2. de Fraissinette A, *et al.* 1988. *Exp. Hematol.* 16:764.
2. Li D, *et al.* 2012. *J. exp Med.* PubMed.

Description: CD1c, also known as R7 or M241, is a 43 kD member of the five CD1 antigens (CD1a-e) in human. The CD1 molecules are type I glycoprotein with structural similarities to MHC class I and a non-covalent associated with β₂-microglobulin, belonging to Ig superfamily. CD1c is expressed on cortical thymocytes, Langerhans cells, dendritic cells, and a subset of B cells. It has been reported that CD1c is also expressed on mature T cells with tightly regulated manner. The function of CD1c is involved in antigen-presentation of glycolipids. It may also act in T cells as an immune regulatory molecule.

Antigen References:

1. Fainboim LM and del C. Salamone. 2002. *J. Biol. Reg. Homeos. Ag.* 16:125.
2. M. del Salamone C, *et al.* 2001. *J. Leukocyte Biol.* 70:567.
3. Zola H, *et al.* Eds. 2007. *Leukocyte and Stromal Cell Molecules: The CD Markers.* P42.

Related Products:

Product
Purified Mouse IgG1, κ Isotype Ctrl
Cell Staining Buffer
RBC Lysis Buffer (10X)

Clone
MOPC-21

Application
FC, ICFC, ICC, IF, IHC, IP, WB
FC, ICC, ICFC
FC, ICFC



For research use only. Not for diagnostic use. Not for resale. BioLegend will not be held responsible for patent infringement or other violations that may occur with the use of our products.



*These products may be covered by one or more Limited Use Label Licenses (see the BioLegend Catalog or our website, www.biollegend.com/ordering#license). BioLegend products may not be transferred to third parties, resold, modified for resale, or used to manufacture commercial products, reverse engineer functionally similar materials, or to provide a service to third parties without written approval of BioLegend. By use of these products you accept the terms and conditions of all applicable Limited Use Label Licenses. Unless otherwise indicated, these products are for research use only and are not intended for human or animal diagnostic, therapeutic or commercial use.