

Product Data Sheet

LEAF™ Purified anti-human CD2

Catalog # / Size: 309212 / 500 µg

Clone: TS1/8

Isotype: Mouse IgG1, κ

Workshop Number: V S025

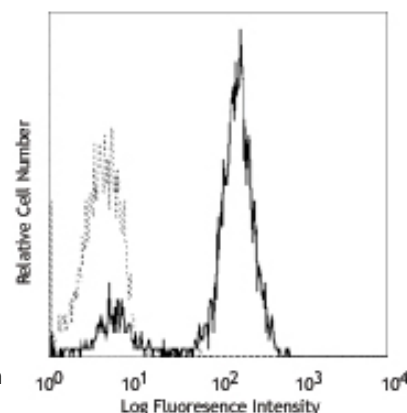
Reactivity: Human

Preparation: The LEAF™ (Low Endotoxin, Azide-Free) antibody was purified by affinity chromatography.

Formulation: 0.2 µm filtered in phosphate-buffered solution, pH 7.2, containing no preservative. Endotoxin level is <0.1 EU/µg of the protein (<0.01 ng/µg of the protein) as determined by the LAL test.

Concentration: 1.0 mg/ml

Storage: The antibody solution should be stored undiluted at 4°C. This LEAF™ solution contains no preservative; handle under aseptic conditions.



Human peripheral blood lymphocytes stained with LEAF™ purified TS1/8 and detected with anti-mouse IgGs FITC

Applications:

Applications: FC - Quality tested
Block - Reported in the literature

Recommended Usage: Each lot of this antibody is quality control tested by immunofluorescent staining with flow cytometric analysis. For immunofluorescent staining, the suggested use of this reagent is ≤0.25 µg per million cells in 100 µl volume or 100 µl of whole blood. It is recommended that the reagent be titrated for optimal performance for each application.

Application Notes: Additional reported applications (for the relevant formats) include: blocking of T cell activation, and partial blocking of B cell costimulation². The LEAF™ Purified antibody (Endotoxin <0.1 EU/µg, Azide-Free, 0.2 µm filtered) is recommended for functional assays (Cat. No. 309212).

Application References: 1. Schlossman S, et al. Eds. 1995. Leucocyte Typing V Oxford University Press. New York.
2. Hughes CCW, et al. 1996. *J. Biol. Chem.* 271:5369.

Description: CD2 is a 50 kD type I transmembrane glycoprotein also known as LFA-2, T11, and sheep red blood cell receptor (SRBC-R). This immunoglobulin superfamily member is expressed on thymocytes, T lymphocytes, NK cells, and thymic B cell subsets. The major ligand for CD2 is CD58 (also known as LFA-3). CD2 has also been reported to bind CD48, CD59, and CD15. CD2 plays a critical role in alternative T cell activation, T cell signaling, and cell-cell adhesion.

Antigen References: 1. Bell G and J. Imboden. 1995. *J. Immunol.* 155:2805.
2. Bierer B, et al. 1989. *Annu. Rev. Immunol.* 7:579.
3. Moingeon P, et al. 1989. *Immunol. Rev.* 111:111.

Related Products:

Product
LEAF™ Purified anti-human CD3
LEAF™ Purified anti-human CD2
LEAF™ Purified anti-human CD3

LEAF™ Purified Mouse IgG1, κ Isotype Ctrl

Clone
HIT3a
RPA-2.10
UCHT1

MOPC-21

Application
FC, IP, Activ, IHC
Block, FC, IHC
FC, Activ, IHC, IP, WB,
CyTOF®
FC, ICFC, WB, IP, ICC, IF, FA



For research use only. Not for diagnostic use. Not for resale. BioLegend will not be held responsible for patent infringement or other violations that may occur with the use of our products.



*These products may be covered by one or more Limited Use Label Licenses (see the BioLegend Catalog or our website, www.biollegend.com/ordering#license). BioLegend products may not be transferred to third parties, resold, modified for resale, or used to manufacture commercial products, reverse engineer functionally similar materials, or to provide a service to third parties without written approval of BioLegend. By use of these products you accept the terms and conditions of all applicable Limited Use Label Licenses. Unless otherwise indicated, these products are for research use only and are not intended for human or animal diagnostic, therapeutic or commercial use.