

Product Data Sheet

LEAF™ Purified anti-human CD2

Catalog # / Size: 300212 / 500 µg

Clone: RPA-2.10

Isotype: Mouse IgG1, κ

Workshop Number: IV T085

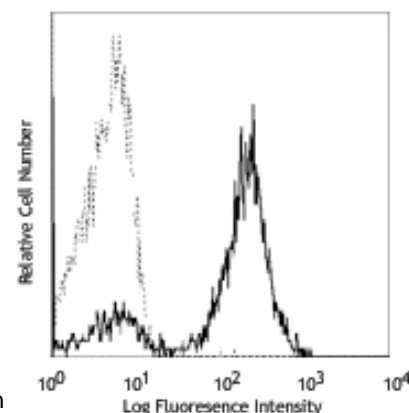
Reactivity: Human, **Cross-Reactivity:** Chimpanzee, Baboon, Cynomolgus, Rhesus, Pigtailed Macaque, Capuchin Monkey, Swine (Pig, Porcine)

Preparation: The LEAF™ (Low Endotoxin, Azide-Free) antibody was purified by affinity chromatography.

Formulation: 0.2 µm filtered in phosphate-buffered solution, pH 7.2, containing no preservative. Endotoxin level is <0.1 EU/µg of the protein (<0.01 ng/µg of the protein) as determined by the LAL test.

Concentration: 1.0 mg/ml

Storage: The antibody solution should be stored undiluted at 4°C. This LEAF™ solution contains no preservative; handle under aseptic conditions.



Human peripheral blood lymphocytes stained with LEAF™ purified RPA-2.10, and detected with anti-mouse IgGs FITC

Applications:

Applications: FC - *Quality tested*
Block, IHC - *Reported in the literature*

Recommended Usage: Each lot of this antibody is quality control tested by immunofluorescent staining with flow cytometric analysis. For immunofluorescent staining, the suggested use of this reagent is ≤0.25 µg per million cells in 100 µl volume or 100 µl of whole blood. It is recommended that the reagent be titrated for optimal performance for each application.

Application Notes: Additional reported applications (for the relevant formats) include: immunohistochemical staining of acetone-fixed frozen tissue sections⁶ and blocking of T cell activation². The LEAF™ purified antibody (Endotoxin <0.1 EU/µg, Azide-Free, 0.2 µm filtered) is recommended for functional assays (Cat. No. 300212).

Application References:

- Knapp W, *et al.* Eds. 1989. Leucocyte Typing IV. Oxford University Press. New York.
- Aversa G, *et al.* 1987. *Transplant. Proc.* 19:277. (Block)
- Zaretsky AG, *et al.* 2009. *J. Exp. Med.* 206:991. (IHC) PubMed
- Perona-Wright G, *et al.* 2010. *Nat. Immunol.* 11:520. (FC) PubMed
- Thummler K, *et al.* 2010. *J. Leukoc. Biol.* 88:1041.
- Kap Y, *et al.* 2009. *J. Histochem. Cytochem.* 57:1159. (IHC)
- Yoshino N, *et al.* 2000. *Exp. Anim. (Tokyo)* 49:97. (FC)

Description: CD2 is a 50 kD type I transmembrane glycoprotein also known as LFA-2, T11, and sheep red blood cell receptor (SRBC-R). This immunoglobulin superfamily member is expressed on thymocytes, T lymphocytes, NK cells, and thymic B cell subsets. The major ligand for CD2 is CD58 (also known as LFA-3). CD2 has also been reported to bind CD48, CD59, and CD15. CD2 plays a critical role in alternative T cell activation, T cell signaling, and cell-cell adhesion.

Antigen References:

- Bell G, *et al.* 1995. *J. Immunol.* 155:2805.
- Bierer B, *et al.* 1989. *Annu. Rev. Immunol.* 7:579.
- Moingeon P, *et al.* 1989. *Immunol. Rev.* 111:111.

Related Products:

Product
 LEAF™ Purified anti-human CD3
 LEAF™ Purified anti-human CD3

 LEAF™ Purified Mouse IgG1, κ Isotype Ctrl
 Cell Staining Buffer
 RBC Lysis Buffer (10X)
 LEAF™ Purified anti-human CD2

Clone
 HIT3a
 UCHT1

 MOPC-21

 TS1/8

Application
 FC, IP, Activ, IHC
 FC, Activ, IHC, IP, WB,
 CyTOF®
 FC, ICFC, WB, IP, ICC, IF, FA
 FC, ICC, ICFC
 FC, ICFC
 Block, FC



For research use only. Not for diagnostic use. Not for resale. BioLegend will not be held responsible for patent infringement or other violations that may occur with the use of our products.



*These products may be covered by one or more Limited Use Label Licenses (see the BioLegend Catalog or our website, www.biollegend.com/ordering#license). BioLegend products may not be transferred to third parties, resold, modified for resale, or used to manufacture commercial products, reverse engineer functionally similar materials, or to provide a service to third parties without written approval of BioLegend. By use of these products you accept the terms and conditions of all applicable Limited Use Label Licenses. Unless otherwise indicated, these products are for research use only and are not intended for human or animal diagnostic, therapeutic or commercial use.