

Product Data Sheet

Biotin anti-rat CD43

Catalog # / Size: 202803 / 100 µg

Clone: W3/13

Isotype: Mouse IgG1, κ

Immunogen: Rat thymocyte membrane glycoproteins

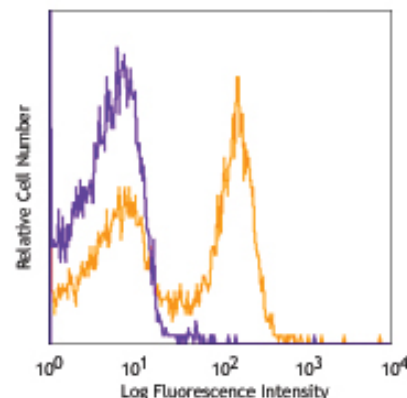
Reactivity: Rat

Preparation: The antibody was purified by affinity chromatography, and conjugated with biotin under optimal conditions. The solution is free of unconjugated biotin.

Formulation: Phosphate-buffered solution, pH 7.2, containing 0.09% sodium azide.

Concentration: 0.5 mg/ml

Storage: The antibody solution should be stored undiluted at 4°C. **Do not freeze.**



LOU rat splenocytes stained with W3/13 biotin, followed by Sav-PE

Applications:

Applications: FC - *Quality tested*
IHC - *Reported in the literature*

Recommended Usage: Each lot of this antibody is quality control tested by immunofluorescent staining with flow cytometric analysis. For immunofluorescent staining, the suggested use of this reagent is ≤ 0.25 µg per 10^6 cells in 100 µl volume or 100 µl of whole blood. It is recommended that the reagent be titrated for optimal performance for each application.

Application Notes: Additional reported (for the relevant formats) applications include: immunohistochemical staining of acetone-fixed frozen sections¹ and paraffin-embedded sections⁴.

Application References:

1. Barclay AN. 1981. *Immunology* 42:593.
2. Brown WRA, *et al.* 1981. *Nature* 289:456.
3. Forbes RC, *et al.* 1983. *Transplantation* 36:681.
4. Jung S, *et al.* 1994. *Immunology* 83:545.

Description: CD43, also known as Ly-48, Leukosialin, Sialophorin, Leukocyte Sialoglycoprotein, and W3/13, is a large single chain of type I transmembrane glycoprotein with abundant O-glycosylation and sialylation sites. It has been reported that CD43 binds to CD54 and Siglec-1. CD43 plays dual roles in cell adhesion and anti-adhesion, as well as costimulation of T cell activation and survival, and induction of apoptosis of T cells and hematopoietic progenitors.

Antigen References:

1. Neil Barclay A, *et al.* 1997. The Leucocyte Antigen Facts Book:Second Edition. Page 238
2. Killeen A, *et al.* 1987. *EMBO J.* 6(13):4029.
3. Thurman EC, *et al.* 1998. *Intl. Immunol.* 10:691.
4. Onami TM, *et al.* 2002. *J. Immunol.* 168:6022.
5. Tong J, *et al.* 2004. *J. Exp. Med.* 199:1277.
6. Jones AT, *et al.* 1994. *J. Immunol.* 153:3426.

Related Products:

Product
Biotin Mouse IgG1, κ Isotype Ctrl
Cell Staining Buffer

Clone
MOPC-21

Application
FC, ICFC
FC, ICC, ICFC



For research use only. Not for diagnostic use. Not for resale. BioLegend will not be held responsible for patent infringement or other violations that may occur with the use of our products.



*These products may be covered by one or more Limited Use Label Licenses (see the BioLegend Catalog or our website, www.biollegend.com/ordering#license). BioLegend products may not be transferred to third parties, resold, modified for resale, or used to manufacture commercial products, reverse engineer functionally similar materials, or to provide a service to third parties without written approval of BioLegend. By use of these products you accept the terms and conditions of all applicable Limited Use Label Licenses. Unless otherwise indicated, these products are for research use only and are not intended for human or animal diagnostic, therapeutic or commercial use.