

Product Data Sheet

Biotin anti-rat CD8a

Catalog # / Size: 200603 / 50 µg

Clone: G28

Isotype: Mouse IgG2a, κ

Immunogen: CD8⁺ Wistar rat splenic T cell hybridomas

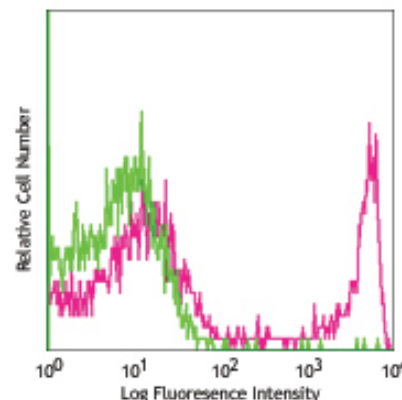
Reactivity: Rat

Preparation: The antibody was purified by affinity chromatography, and conjugated with biotin under optimal conditions. The solution is free of unconjugated biotin.

Formulation: Phosphate-buffered solution, pH 7.2, containing 0.09% sodium azide.

Concentration: 0.5 mg/ml

Storage: The antibody solution should be stored undiluted at 4°C. **Do not freeze.**



LOU rat splenocytes stained with G28 biotin, followed by SAV-PE

Applications:

Applications: FC - Quality tested

Recommended Usage: Each lot of this antibody is quality control tested by immunofluorescent staining with flow cytometric analysis. For immunofluorescent staining, the suggested use of this reagent is ≤0.06 µg per million cells in 100 µl volume. It is recommended that the reagent be titrated for optimal performance for each application.

Application Notes: Additional reported applications (for the relevant formats) include: immunoprecipitation¹, blocking¹ of allogeneic responses, and immunohistochemical staining of acetone-fixed frozen sections. The LEAF™ purified antibody (Endotoxin <0.1 EU/µg, Azide-Free, 0.2 µm filtered) is recommended for functional assays (Cat. No. 200612).

Application References: 1. Torres-Nagel N, *et al.* 1992. *Eur. J. Immunol.* 22:2841.

Description: CD8a is a 32 kD glycoprotein also known as T8, Lyt2, Ly-2, and CD8α. CD8a is a member of the immunoglobulin superfamily expressed on most thymocytes, subset of mature T cells, most NK cells, macrophages, and some activated CD4⁺ T cells (not resting). CD8a forms heterodimers with the CD8β chain (CD8b) on the surface of most thymocytes, while mature peripheral T lymphocytes express almost exclusively the CD8 αβ heterodimer. Intestinal intraepithelial lymphocytes express CD8a without CD8b. CD8 is an antigen co-receptor on T cells that interacts with MHC class I on antigen-presenting cells or epithelial cells. CD8 participates in T cell activation through its association with the T cell receptor complex and protein tyrosine kinase lck (p56lck).

Antigen References: 1. Brideau RJ, *et al.* 1980. *Eur. J. Immunol.* 10:609.
 2. Dallman MJ, *et al.* 1982. *Eur. J. Immunol.* 12:511.
 3. Cantrell DA, *et al.* 1982. *Immunol.* 45:97.
 4. Lyscom N, *et al.* 1982. *Immunol.* 45:775.
 5. Johnson P, *et al.* 1985. *EMBO. J.* 4:2539.
 6. Barclay AN. 1981. *Immunol.* 42:593.

Related Products:

Product
 Biotin Mouse IgG2a, κ Isotype Ctrl
 APC Streptavidin
 APC/Cy7 Streptavidin
 FITC Streptavidin
 PE Streptavidin
 PE/Cy5 Streptavidin
 PE/Cy7 Streptavidin
 Cell Staining Buffer

Clone
 MOPC-173

Application

FC, ICFC
 FC, ICFC
 FC, ICFC
 FC, ICFC
 FC, ICFC
 FC, ICFC
 FC, ICFC
 FC, ICC, ICFC



For research use only. Not for diagnostic use. Not for resale. BioLegend will not be held responsible for patent infringement or other violations that may occur with the use of our products.



*These products may be covered by one or more Limited Use Label Licenses (see the BioLegend Catalog or our website, www.biollegend.com/ordering#license). BioLegend products may not be transferred to third parties, resold, modified for resale, or used to manufacture commercial products, reverse engineer functionally similar materials, or to provide a service to third parties without written approval of BioLegend. By use of these products you accept the terms and conditions of all applicable Limited Use Label Licenses. Unless otherwise indicated, these products are for research use only and are not intended for human or animal diagnostic, therapeutic or commercial use.