

# Product Data Sheet

## FITC anti-mouse TCR V $\beta$ 2

**Catalog # / Size:** 127905 / 50  $\mu$ g  
 127906 / 250  $\mu$ g

**Clone:** B20.6

**Isotype:** Rat IgG2a,  $\kappa$

**Immunogen:** Soluble TCR from mouse CTL clone CW3/1.1

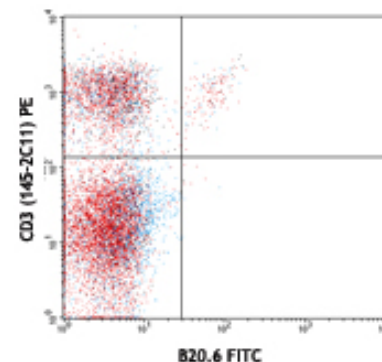
**Reactivity:** Mouse

**Preparation:** The antibody was purified by affinity chromatography, and conjugated with FITC under optimal conditions. The solution is free of unconjugated FITC.

**Formulation:** Phosphate-buffered solution, pH 7.2, containing 0.09% sodium azide.

**Concentration:** 0.5 mg/ml

**Storage:** The antibody solution should be stored undiluted at 4°C and protected from prolonged exposure to light. **Do not freeze.**



C57BL/6 mouse splenocytes stained with CD3 (145-2C11) PE and B20.6 FITC

## Applications:

**Applications:** FC - Quality tested

**Recommended Usage:** Each lot of this antibody is quality control tested by immunofluorescent staining with flow cytometric analysis. For immunofluorescent staining, the suggested use of this reagent is  $\leq 1.0$   $\mu$ g per million cells in 100  $\mu$ l volume. It is recommended that the reagent be titrated for optimal performance for each application.

**Application References:** 1. Necker A, *et al.* 1991. *Eur. J. Immunol.* 21:3035  
 2. Hodes RJ, *et al.* 1993. *J Immunol* 150:1422

**Description:** The B20.6 antibody recognizes V beta 2 TCR of all strains tested. V beta 2 bearing T lymphocytes are clonally eliminated in MHC class II I-E expressing mice neonatally infected with MMTV virus through milk feeding.

**Antigen References:** 1. Kubo RT, *et al.* 1989. *J. Immunol.* 142:2736  
 2. Necker A, *et al.* 1991. *Eur. J. Immunol.* 21:3035

### Related Products:

**Product**  
 FITC Rat IgG2a,  $\kappa$  Isotype Ctrl  
 Cell Staining Buffer  
 RBC Lysis Buffer (10X)  
 TruStain fcX™ (anti-mouse CD16/32)

**Clone**  
 RTK2758

93

**Application**  
 FC, ICFC  
 FC, ICC, ICFC  
 FC, ICFC  
 FC



For research use only. Not for diagnostic use. Not for resale. BioLegend will not be held responsible for patent infringement or other violations that may occur with the use of our products.



\*These products may be covered by one or more Limited Use Label Licenses (see the BioLegend Catalog or our website, [www.biolegend.com/ordering#license](http://www.biolegend.com/ordering#license)). BioLegend products may not be transferred to third parties, resold, modified for resale, or used to manufacture commercial products, reverse engineer functionally similar materials, or to provide a service to third parties without written approval of BioLegend. By use of these products you accept the terms and conditions of all applicable Limited Use Label Licenses. Unless otherwise indicated, these products are for research use only and are not intended for human or animal diagnostic, therapeutic or commercial use.