

# Product Data Sheet

## PE anti-mouse TCR Vβ11

**Catalog # / Size:** 125907 / 100 µg

**Clone:** KT11

**Isotype:** Rat IgG2b, κ

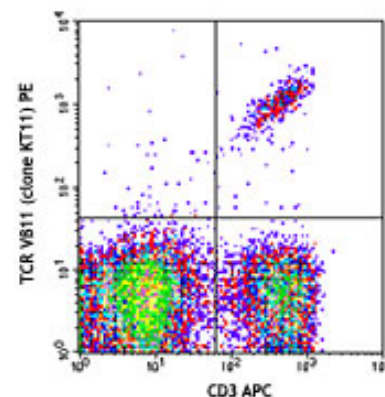
**Reactivity:** Mouse

**Preparation:** The antibody was purified by affinity chromatography, and conjugated with PE under optimal conditions. The solution is free of unconjugated PE and unconjugated antibody.

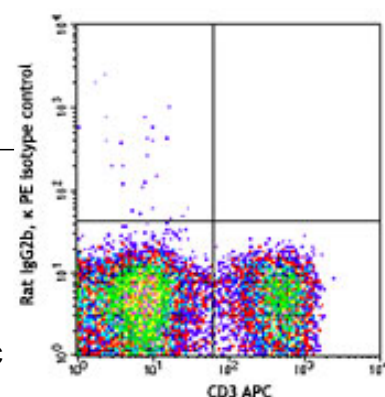
**Formulation:** Phosphate-buffered solution, pH 7.2, containing 0.09% sodium azide.

**Concentration:** 0.2 mg/ml

**Storage:** The antibody solution should be stored undiluted at 4°C and protected from prolonged exposure to light. **Do not freeze.**



C57BL/6 splenocytes were stained with CD3 APC and TCR Vβ11 (clone KT11) PE (top) or rat IgG2b, κ PE isotype control (bottom).



## Applications:

**Applications:** FC - Quality tested

**Recommended Usage:** Each lot of this antibody is quality control tested by immunofluorescent staining with flow cytometric analysis. For immunofluorescent staining, the suggested use of this reagent is ≤0.25 µg per million cells in 100 µl volume. It is recommended that the reagent be titrated for optimal performance for each application.

**Application References:** 1. Quigley MF, *et al.* 2010. *Proc Natl Acad Sci USA*. 9:19414. PubMed

**Description:** The Vβ11 gene locus is deleted in mice of TCR a haplotype (C57BR, C57L, SJL, SWR) and TCR c haplotype (RIII). Mice of TCR b haplotype (C57BL, BALB/c, AKR, etc.) have Vβ11-bearing T cells. However, mice expressing MHC class II I-E and some superantigens, such as Mtv-8, Mtv-9 and Mtv-11 will show a partial deletion of Tβ11-bearing T cells.

Related Products:	Product	Clone	Application
	PE Rat IgG2b, κ Isotype Ctrl	RTK4530	FC, ICFC
	Cell Staining Buffer		FC, ICC, ICFC
	RBC Lysis Buffer (10X)		FC, ICFC
	TruStain fcX™ (anti-mouse CD16/32)	93	FC



For research use only. Not for diagnostic use. Not for resale. BioLegend will not be held responsible for patent infringement or other violations that may occur with the use of our products.



\*These products may be covered by one or more Limited Use Label Licenses (see the BioLegend Catalog or our website, [www.biolegend.com/ordering#license](http://www.biolegend.com/ordering#license)). BioLegend products may not be transferred to third parties, resold, modified for resale, or used to manufacture commercial products, reverse engineer functionally similar materials, or to provide a service to third parties without written approval of BioLegend. By use of these products you accept the terms and conditions of all applicable Limited Use Label Licenses. Unless otherwise indicated, these products are for research use only and are not intended for human or animal diagnostic, therapeutic or commercial use.