

Product Data Sheet

PE anti-mouse PDC-TREM

Catalog # / Size: 139203 / 25 µg
139204 / 100 µg

Clone: 4A6

Isotype: Rat IgG2a, κ

Immunogen: Recombinant soluble PDC-TREM

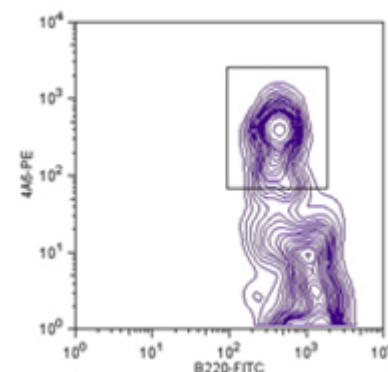
Reactivity: Mouse

Preparation: The antibody was purified by affinity chromatography and conjugated with PE under optimal conditions. The solution is free of unconjugated PE and unconjugated antibody.

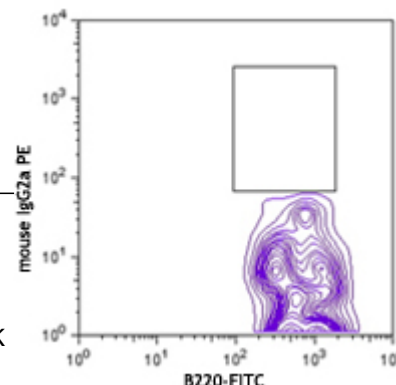
Formulation: Phosphate-buffered solution, pH 7.2, containing 0.09% sodium azide.

Concentration: 0.2 mg/ml

Storage: The antibody solution should be stored undiluted at 4°C and protected from prolonged exposure to light. **Do not freeze.**



C57BL/6 mouse splenocytes activated overnight with CpG-A and stained with B220 FITC and 4A6 PE (top) or mouse IgG2a PE isotype control (bottom). The data shown is from the B220+CD11c+ cell population.



Applications:

Applications: FC - Quality tested

Recommended Usage: Each lot of this antibody is quality control tested by immunofluorescent staining with flow cytometric analysis. For immunofluorescent staining, the suggested use of this reagent is ≤1.0 µg per million cells in 100 µl volume. It is recommended that the reagent be titrated for optimal performance for each application.

Application Notes: Additional reported applications (for the relevant formats) include: Western blot¹.

Application References: 1. Watarai H, *et al.* 2008. *Proc. Natl. Acad. Sci. USA* 105:2993. (WB)

Description: PDC-TREM, also known as plasmacytoid dendritic cell (PDC) -specific receptor, is a member of the TREM receptor family. It is a transmembrane protein composed of an extracellular region with one V-type Ig domain, a transmembrane region with a lysine residue, and a cytoplasmic domain with no recognized signaling motifs. The lysine present in the transmembrane region allows PDC-TREM to form a complex with DAP12 and Plexin-A1. PI3K and Erk 1/2 are involved in the signal transduction of this complex. PDC-TREM is expressed in TLR-activated PDCs and is involved in the production of IFN-α.

Antigen References: 1. Jill W, *et al.* 2009. *Curr. Opin. Immunol.* 21:38.
2. Lanier LL. 2009. *Immunol. Rev.* 227:150.

Related Products:

Product
PE Rat IgG2a, κ Isotype Ctrl
Cell Staining Buffer
RBC Lysis Buffer (10X)
TruStain fcX™ (anti-mouse CD16/32)

Clone
RTK2758

93

Application
FC, ICFC
FC, ICC, ICFC
FC, ICFC
FC



For research use only. Not for diagnostic use. Not for resale. BioLegend will not be held responsible for patent infringement or other violations that may occur with the use of our products.



*These products may be covered by one or more Limited Use Label Licenses (see the BioLegend Catalog or our website, www.biolegend.com/ordering#license). BioLegend products may not be transferred to third parties, resold, modified for resale, or used to manufacture commercial products, reverse engineer functionally similar materials, or to provide a service to third parties without written approval of BioLegend. By use of these products you accept the terms and conditions of all applicable Limited Use Label Licenses. Unless otherwise indicated, these products are for research use only and are not intended for human or animal diagnostic, therapeutic or commercial use.