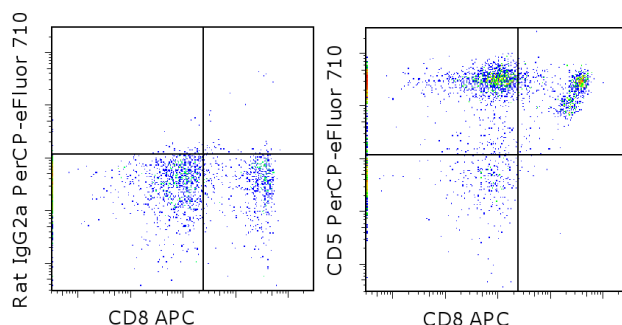


Anti-Canine CD5 PerCP-eFluor® 710

Catalog Number: 46-5050

RUO: For Research Use Only. Not for use in diagnostic procedures.



Staining of normal canine peripheral blood cells with Anti-Canine CD8a APC (cat. 17-5080) and Rat IgG2a kappa Isotype Control PerCP-eFluor® 710 (cat. 46-4321) (left) or Anti-Canine CD5 PerCP-eFluor® 710 (right). Cells in the lymphocyte gate were used for analysis.

Product Information

Contents: Anti-Canine CD5 PerCP-eFluor® 710



Catalog Number: 46-5050

Clone: YKIX322.3

Concentration: 5 µL (0.125 µg)/test

Host/Isotype: Rat IgG2a, kappa

Formulation: aqueous buffer, 0.09% sodium azide, may contain carrier protein/stabilizer

Temperature Limitation: Store at 2-8°C. Do not freeze. Light sensitive material.

Batch Code: Refer to vial

Use By: Refer to vial



LOT



Description

This YKIX322.3 monoclonal antibody reacts with canine CD5, also known as Ly-1. CD5 is a 67-kDa type I transmembrane glycoprotein expressed on thymocytes and mature T cells. Studies have demonstrated that NK cells in dogs also express CD5, but at lower levels. In dogs, CD5 is not detectable on B cells or B cell lines.

Applications Reported

This YKIX322.3 antibody has been reported for use in flow cytometric analysis.

Applications Tested

This YKIX322.3 antibody has been pre-titrated and tested by flow cytometric analysis of normal canine peripheral blood cells. This can be used at 5 µL (0.125 µg) per test. A test is defined as the amount (µg) of antibody that will stain a cell sample in a final volume of 100 µL. Cell number should be determined empirically but can range from 10⁵ to 10⁸ cells/test.

PerCP-eFluor® 710 can be used in place of PE-Cy5, PE-Cy5.5 or PerCP-Cy5.5. PerCP-eFluor® 710 emits at 710 nm and is excited with the blue laser (488 nm). Please make sure that your instrument is capable of detecting this fluorochrome. For a filter configuration, we recommend using the 685 LP dichroic mirror and 710/40 band pass filter, however the 695/40 band pass filter is an acceptable alternative.

Our testing indicates that PerCP-eFluor® 710 conjugated antibodies are stable when stained samples are exposed to freshly prepared 2% formaldehyde overnight at 4°C, but please evaluate for alternative fixation protocols.

Click here or contact eBioscience Technical Support for more information on eFluor® Organic Dyes including PerCP-eFluor® 710.

References

Huang YC, Hung SW, Jan TR, Liao KW, Cheng CH, Wang YS, Chu RM. CD5-low expression lymphocytes in canine peripheral blood show characteristics of natural killer cells. J Leukoc Biol. 2008 Dec;84(6):1501-10.

Rabanal RM, Ferrer L, Else RW. Immunohistochemical detection of canine leucocyte antigens by specific monoclonal

Not for further distribution without written consent.

Copyright © 2000-2012 eBioscience, Inc.

Tel: 888.999.1371 or 858.642.2058 • Fax: 858.642.2046 • www.ebioscience.com • info@ebioscience.com

Anti-Canine CD5 PerCP-eFluor® 710

Catalog Number: 46-5050

RUO: For Research Use Only. Not for use in diagnostic procedures.

antibodies in canine normal tissues. Vet Immunol Immunopathol. 1995 Jul;47(1-2):13-23.

Cobbold S, Metcalfe S. Monoclonal antibodies that define canine homologues of human CD antigens: summary of the First International Canine Leukocyte Antigen Workshop (CLAW). Tissue Antigens. 1994 Mar;43(3):137-54. (YKIX322.3, FC)

Related Products

11-5040 Anti-Canine CD4 FITC (YKIX302.9)

17-5080 Anti-Canine CD8a APC (YCATE55.9)

46-4321 Rat IgG2a K Isotype Control PerCP-eFluor® 710 (eBR2a)

48-5450 Anti-Canine CD45 eFluor® 450 (YKIX716.13)