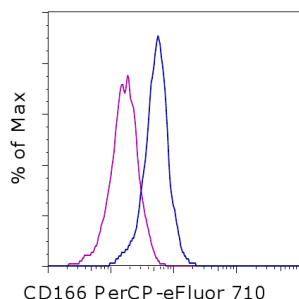


## Anti-Human CD166 (ALCAM) PerCP-eFluor® 710

**Catalog Number:** 46-1668

**Also known as:** Activated leukocyte cell adhesion molecule

**RUO: For Research Use Only. Not for use in diagnostic procedures.**



Staining of normal human peripheral blood cells with Mouse IgG1 K Isotype Control PerCP-eFluor® 710 (cat. 46-4714) (blue histogram) or Anti-Human CD166 (ALCAM) PerCP-eFluor® 710 (purple histogram). Cells in the monocyte gate were used for analysis.

### Product Information

**Contents:** Anti-Human CD166 (ALCAM)  
PerCP-eFluor® 710



**Catalog Number:** 46-1668

**Clone:** 3A6

**Concentration:** 5 µL (0.25 µg)/test

**Host/Isotype:** Mouse IgG1, kappa



**Formulation:** aqueous buffer, 0.09% sodium azide, may contain carrier protein/stabilizer

**Temperature Limitation:** Store at 2-8°C. Do not freeze. Light-sensitive material.



**Batch Code:** Refer to vial



**Use By:** Refer to vial

### Description

This 3A6 monoclonal antibody reacts with human CD166, which is also known as activated leukocyte cell adhesion molecule (ALCAM). CD166 is an immunoglobulin superfamily cell adhesion molecule that is broadly expressed on developing and adult hematopoietic (e.g., activated T and B cells, monocytes, and dendritic cells) and non-hematopoietic (e.g., neural, endothelial, and epithelial) tissues. CD166 has also been detected in melanoma, colorectal carcinoma, as well as cancers of the breast, prostate, and bladder. CD166 mediates cell-cell adhesion by forming low-affinity homophilic interactions (ALCAM-ALCAM) or high-affinity heterophilic interactions with its ligand CD6 (ALCAM-CD6). CD166 plays a role in development, inflammation, and neutrophil migration. Moreover, its expression can be used as a prognostic marker for several cancers and has been reported to be a cancer stem cell marker.

The 3A6 antibody has been reported to induce the internalization of CD166 and its recycling back to the cell surface.

### Applications Reported

This 3A6 antibody has been reported for use in flow cytometric analysis.

### Applications Tested

This 3A6 antibody has been pre-titrated and tested by flow cytometric analysis of normal human peripheral blood lymphocytes. This can be used at 5 µL (0.25 µg) per test. A test is defined as the amount (µg) of antibody that will stain a cell sample in a final volume of 100 µL. Cell number should be determined empirically but can range from 10<sup>5</sup> to 10<sup>8</sup> cells/test.

PerCP-eFluor® 710 can be used in place of PE-Cy5, PE-Cy5.5 or PerCP-Cy5.5. PerCP-eFluor® 710 emits at 710 nm and is excited with the blue laser (488 nm). Please make sure that your instrument is capable of detecting this fluorochrome. For a filter configuration, we recommend using the 685 LP dichroic mirror and 710/40 band pass filter, however the 695/40 band pass filter is an acceptable alternative.

Our testing indicates that PerCP-eFluor® 710 conjugated antibodies are stable when stained samples are exposed to

Not for further distribution without written consent.

Copyright © 2000-2012 eBioscience, Inc.

Tel: 888.999.1371 or 858.642.2058 • Fax: 858.642.2046 • [www.ebioscience.com](http://www.ebioscience.com) •  
[info@ebioscience.com](mailto:info@ebioscience.com)

---

## Anti-Human CD166 (ALCAM) PerCP-eFluor® 710

**Catalog Number:** 46-1668

**Also known as:** Activated leukocyte cell adhesion molecule

**RUO: For Research Use Only. Not for use in diagnostic procedures.**

---

freshly prepared 2% formaldehyde overnight at 4°C, but please evaluate for alternative fixation protocols.

Click [here](#) or contact eBioscience Technical Support for more information on eFluor™ Organic Dyes including PerCP-eFluor® 710.

### References

King JA, Tan F, Mbeunkui F, Chambers Z, Cantrell S, Chen H, Alvarez D, Shevde LA, Ofori-Acquah SF. Mechanisms of transcriptional regulation and prognostic significance of activated leukocyte cell adhesion molecule in cancer. *Mol Cancer*. 2010 Oct 7;9:266.

Piazza T, Cha E, Bongarzone I, Canevari S, Bolognesi A, Polito L, Bargellesi A, Sassi F, Ferrini S, Fabbi M. Internalization and recycling of ALCAM/CD166 detected by a fully human single-chain recombinant antibody. *J Cell Sci*. 2005 Apr 1;118(Pt 7):1515-25. (**3A6**, FA)

Saifullah MK, Fox DA, Sarkar S, Abidi SM, Endres J, Piktel J, Haqqi TM, Singer NG. Expression and characterization of a novel CD6 ligand in cells derived from joint and epithelial tissues. *J Immunol*. 2004 Nov 15;173(10):6125-33. (**3A6**, FC and ICC)

van Kempen LC, Nelissen JM, Degen WG, Torensma R, Weidle UH, Bloemers HP, Figdor CG, Swart GW. Molecular basis for the homophilic activated leukocyte cell adhesion molecule (ALCAM)-ALCAM interaction. *J Biol Chem*. 2001 Jul 13;276(28):25783-90.

Bowen MA, Patel DD, Li X, Modrell B, Malacko AR, Wang WC, Marquardt H, Neubauer M, Pesando JM, Francke U, et al. Cloning, mapping, and characterization of activated leukocyte-cell adhesion molecule (ALCAM), a CD6 ligand. *J Exp Med*. 1995 Jun 1;181(6):2213-20.

### Related Products

46-4714 Mouse IgG1 K Isotype Control PerCP-eFluor® 710 (P3.6.2.8.1)