

# Product Data Sheet

## APC anti-mouse IgD

**Catalog # / Size:** 405713 / 25 µg  
405714 / 100 µg

**Clone:** 11-26c.2a

**Isotype:** Rat IgG2a, κ

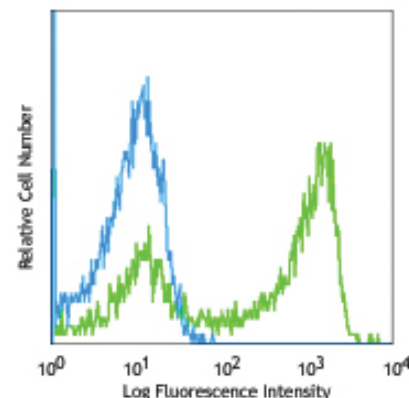
**Reactivity:** Mouse

**Preparation:** The antibody was purified by affinity chromatography and conjugated with APC under optimal conditions. The solution is free of unconjugated APC and unconjugated antibody.

**Formulation:** Phosphate-buffered solution, pH 7.2, containing 0.09% sodium azide.

**Concentration:** 0.2 mg/ml

**Storage:** The antibody solution should be stored undiluted at 4°C and protected from prolonged exposure to light. **Do not freeze.**



C57BL/6 splenocytes stained with 11-26c.2a APC

## Applications:

**Applications:** FC - Quality tested

**Recommended Usage:** Each lot of this antibody is quality control tested by immunofluorescent staining with flow cytometric analysis. For immunofluorescent staining, the suggested use of this reagent is ≤0.06 µg per million cells in 100 µl volume. It is recommended that the reagent be titrated for optimal performance for each application.

**Application Notes:** The 11-26c.2a antibody reacts with immunoglobulin D in all tested mouse haplotypes. The antibody binds membrane IgD expressed on most B cells. The 11-26c.2a antibody neither induces proliferation of splenic B cells nor induces B cell activation. Additional reported applications (for the relevant formats) include: immunohistochemical staining of acetone-fixed frozen sections<sup>2,3</sup>.

**Application References:**

1. Nitschke L, *et al.* 1993. *P. Natl. Acad. Sci. USA* 90:1887. (FC)
2. Weih D, *et al.* 2001. *J. Immunol.* 167:1909. (IHC)
3. Koni PA, *et al.* 2001. *J. Exp. Med.* 193:741. (IHC)
4. Ahuja A, *et al.* 2007. *J. Immunol.* 179:3351. (FC) PubMed
5. Haynes NM, *et al.* 2007. *J. Immunol.* 179:5099. (FC)
6. Good-Jacobson KL, *et al.* 2010. *Nat. Immunol.* 11:535. (FC) PubMed
7. Tomayko MM, *et al.* 2010. *J. Immunol.* 185:7146. PubMed
8. Park SY, *et al.* 2013. *J. Immunol.* 190:1094. PubMed

**Description:** Surface IgD is an important B cell differentiation marker.

### Related Products:

Product  
APC Rat IgG2a, κ Isotype Ctrl  
Cell Staining Buffer  
RBC Lysis Buffer (10X)

Clone  
RTK2758

Application  
FC, ICFC  
FC, ICC, ICFC  
FC, ICFC



For research use only. Not for diagnostic use. Not for resale. BioLegend will not be held responsible for patent infringement or other violations that may occur with the use of our products.



\*These products may be covered by one or more Limited Use Label Licenses (see the BioLegend Catalog or our website, [www.biollegend.com/ordering#license](http://www.biollegend.com/ordering#license)). BioLegend products may not be transferred to third parties, resold, modified for resale, or used to manufacture commercial products, reverse engineer functionally similar materials, or to provide a service to third parties without written approval of BioLegend. By use of these products you accept the terms and conditions of all applicable Limited Use Label Licenses. Unless otherwise indicated, these products are for research use only and are not intended for human or animal diagnostic, therapeutic or commercial use.