

Product Data Sheet

Pacific Blue™ anti-mouse IgD

Catalog # / Size: 405711 / 25 µg
405712 / 100 µg

Clone: 11-26c.2a

Isotype: Rat IgG2a, κ

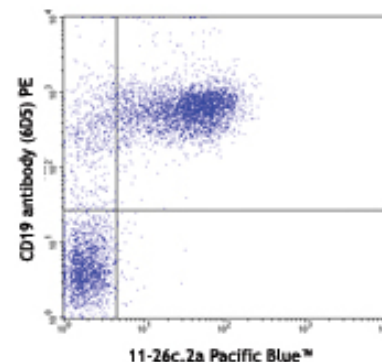
Reactivity: Mouse

Preparation: The antibody was purified by affinity chromatography, and conjugated with Pacific Blue™ under optimal conditions. The solution is free of unconjugated Pacific Blue™.

Formulation: Phosphate-buffered solution, pH 7.2, containing 0.09% sodium azide.

Concentration: 0.5 mg/ml

Storage: The antibody solution should be stored undiluted at 4°C and protected from prolonged exposure to light. **Do not freeze.**



C57BL/6 splenocytes stained with 11-26c.2a Pacific Blue™ and CD19 antibody (6D5) PE

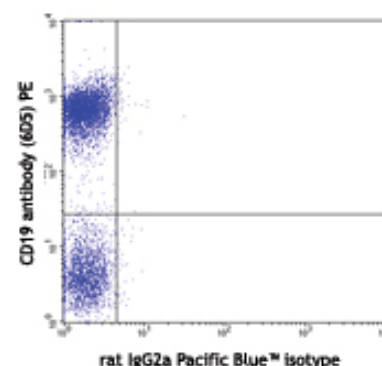
Applications:

Applications: FC - Quality tested

Recommended Usage: Each lot of this antibody is quality control tested by immunofluorescent staining with flow cytometric analysis. For immunofluorescent staining, the suggested use of this reagent is ≤ 1.0 µg per 10⁶ cells in 100 µl volume or 100 µl of whole blood. It is recommended that the reagent be titrated for optimal performance for each application.

* Pacific Blue™ has a maximum emission of 455 nm when it is excited at 405 nm. Prior to using Pacific Blue™ conjugate for flow cytometric analysis, please verify your flow cytometer's capability of exciting and detecting the fluorochrome.

** Pacific Blue™ is a registered trademark of Molecular Probes, Inc. Pacific Blue™ dye antibody conjugates are sold under license from Molecular Probes, Inc. for research use only, except for use in combination with microarrays and high content screening, and are covered by pending and issued patents.



C57BL/6 splenocytes stained with rat IgG2a Pacific Blue™ isotype and CD19 antibody (6D5) PE

Application Notes: The 11-26c.2a antibody reacts with immunoglobulin D in all tested mouse haplotypes. The antibody binds membrane IgD expressed on most B cells. The 11-26c.2a antibody neither induces proliferation of splenic B cells nor induces B cell activation. Additional reported applications (for the relevant formats) include: immunohistochemical staining of acetone-fixed frozen sections^{2,3}.

Application References:

1. Nitschke L, *et al.* 1993. *P. Natl. Acad. Sci. USA* 90:1887. (FC)
2. Weih D, *et al.* 2001. *J. Immunol.* 167:1909. (IHC)
3. Koni PA, *et al.* 2001. *J. Exp. Med.* 193:741. (IHC)
4. Ahuja A, *et al.* 2007. *J. Immunol.* 179:3351. (FC) PubMed
5. Haynes NM, *et al.* 2007. *J. Immunol.* 179:5099. (FC)
6. Good-Jacobson KL, *et al.* 2010. *Nat. Immunol.* 11:535. (FC) PubMed
7. Tomayko MM, *et al.* 2010. *J. Immunol.* 185:7146. PubMed
8. Park SY, *et al.* 2013. *J. Immunol.* 190:1094. PubMed

Description: Surface IgD is an important B cell differentiation marker.

Related Products:

Product
Pacific Blue™ Rat IgG2a, κ Isotype Ctrl
Cell Staining Buffer
RBC Lysis Buffer (10X)

Clone
RTK2758

Application
FC, ICFC
FC, ICC, ICFC
FC, ICFC



For research use only. Not for diagnostic use. Not for resale. BioLegend will not be held responsible for patent infringement or other violations that may occur with the use of our products.



*These products may be covered by one or more Limited Use Label Licenses (see the BioLegend Catalog or our website, www.biollegend.com/ordering#license). BioLegend products may not be transferred to third parties, resold, modified for resale, or used to manufacture commercial products, reverse engineer functionally similar materials, or to provide a service to third parties without written approval of BioLegend. By use of these products you accept the terms and conditions of all applicable Limited Use Label Licenses. Unless otherwise indicated, these products are for research use only and are not intended for human or animal diagnostic, therapeutic or commercial use.