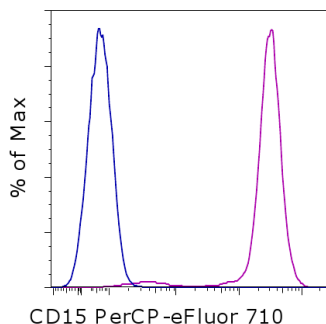


Anti-Human CD15 PerCP-eFluor® 710

Catalog Number: 46-0158

Also known as: Leu-M1, Lewis-x, Lex, SSEA-1, stage-specific embryonic antigen-1

RUO: For Research Use Only. Not for use in diagnostic procedures.



Staining of normal human peripheral blood cells with Mouse IgM Isotype Control FITC (cat. 11-4752) (blue histogram) or Anti-Human CD15 PerCP-eFluor® 710 (purple histogram). Cells in the granulocyte gate were used for analysis.

Product Information

Contents: Anti-Human CD15 PerCP-eFluor® 710



Catalog Number: 46-0158

Clone: MMA

Concentration: 5 uL (0.25 ug)/test

Host/Isotype: Mouse IgM



Formulation: aqueous buffer, 0.09% sodium azide, may contain carrier protein/stabilizer

Temperature Limitation: Store at 2-8°C. Do not freeze. Light-sensitive material.



Batch Code: Refer to vial



Use By: Refer to vial

Contains sodium azide

Description

The MMA monoclonal antibody reacts with human CD15, Lewis X. This 3-fucosyl-N-acetylglucosamine carbohydrate moiety is expressed by granulocytes. Monocytes express this structure at varying degree while lymphocytes are negative.

Applications Reported

This MMA antibody has been reported for use in flow cytometric analysis.

Applications Tested

This MMA antibody has been pre-titrated and tested by flow cytometric analysis of normal human peripheral blood cells. This can be used at 5 µL (0.25 µg) per test. A test is defined as the amount (µg) of antibody that will stain a cell sample in a final volume of 100 µL. Cell number should be determined empirically but can range from 10⁵ to 10⁸ cells/test.

PerCP-eFluor® 710 can be used in place of PE-Cy5, PE-Cy5.5 or PerCP-Cy5.5. PerCP-eFluor® 710 emits at 710 nm and is excited with the blue laser (488 nm). Please make sure that your instrument is capable of detecting this fluorochrome. For a filter configuration, we recommend using the 685 LP dichroic mirror and 710/40 band pass filter, however the 695/40 band pass filter is an acceptable alternative.

Fixation: Samples can be stored in IC Fixation Buffer (cat. 00-8222) (100 uL cell sample + 100 uL IC Fixation Buffer) or 1-step Fix/Lyse Solution (cat. 00-5333) for up to 3 days in the dark at 4°C with minimal impact on brightness and FRET efficiency/compensation. Some generalizations regarding fluorophore performance after fixation can be made, but clone specific performance should be determined empirically.

References

Pellegrini W, Bresciani G, De Zorzi A, Marocolo D, Ungari M, Facchetti F. MMA monoclonal antibody is a superior anti-CD15 reagent for the diagnosis of classical Hodgkin's lymphoma. *Haematologica*. 2007 May;92(5):708-9.

Not for further distribution without written consent.

Copyright © 2000-2012 eBioscience, Inc.

Tel: 888.999.1371 or 858.642.2058 • Fax: 858.642.2046 • www.ebioscience.com •
info@ebioscience.com

Anti-Human CD15 PerCP-eFluor® 710

Catalog Number: 46-0158

Also known as: Leu-M1, Lewis-x, Lex, SSEA-1, stage-specific embryonic antigen-1

RUO: For Research Use Only. Not for use in diagnostic procedures.

Knapp, W., B. Dorken, et al. eds. 1989. Leucocyte Typing IV: White Cell Differentiation Antigens. Oxford University Press. New York.

Related Products

11-4752 Mouse IgM Isotype Control FITC