

# Product Data Sheet

## PE anti-mouse/human Mac-2 (Galectin-3)

**Catalog # / Size:** 125405 / 50 µg  
125406 / 200 µg

**Clone:** M3/38

**Isotype:** Rat IgG2a, κ

**Immunogen:** Raised against galectin-3 of mouse origin

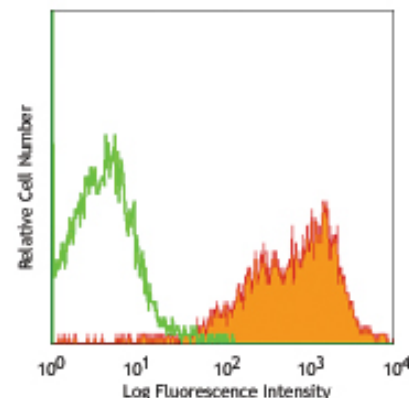
**Reactivity:** Mouse, Human

**Preparation:** The antibody was purified by affinity chromatography, and conjugated with PE under optimal conditions. The solution is free of unconjugated PE and unconjugated antibody.

**Formulation:** Phosphate-buffered solution, pH 7.2, containing 0.09% sodium azide.

**Concentration:** 0.2 mg/ml

**Storage:** The antibody solution should be stored undiluted at 4°C and protected from prolonged exposure to light. **Do not freeze.**



BALB/c peritoneal macrophages  
stained with M3/38 PE

## Applications:

**Applications:** FC - Quality tested

**Recommended Usage:** Each lot of this antibody is quality control tested by immunofluorescent staining with flow cytometric analysis. For immunofluorescent staining, the suggested use of this reagent is ≤ 0.25 µg per 10<sup>6</sup> cells in 100 µl volume. It is recommended that the reagent be titrated for optimal performance for each application.

**Application Notes:** Clone M3/38 has been reported to recognize residues 48–100 in the amino-terminal domain of galectin-3.<sup>7</sup>

**Application References:**

1. Ho MK. and Springer TA. 1982. *J. Immunol.* 128:1221.
2. Rosenberg I, et al. 1991. *J. Biol. Chem.* 266:18731.
3. Evans CE, et al. 2010. *Arterioscler Vasc Biol.* PubMed
4. Jacob N, et al. 2011. *J. Immunol.* 186:4984. PubMed.
5. Li X, et al. 2011. *Am J Physiol Heart Circ Physiol.* 301:1932. PubMed.
6. Chao C, et al. 2012. *Clin Cancer Res.* 18:4702. PubMed
7. Melo FH, et al. 2011. *PLoS One.* 6:e29313.

**Description:** Galectins, a family of carbohydrate binding proteins (lectins) have been implicated in inflammation and cancer. All galectins bind lactose and other beta-galactosides but differ in their affinity for more complex saccharides.

**Antigen References:**

1. Ho MK. and Springer TA. 1982. *J. Immunol.* 128:1221.
2. Rosenberg I, et al. 1991. *J. Biol. Chem.* 266:18731.

### Related Products:

**Product**  
 PE Rat IgG2a, κ Isotype Ctrl  
 Cell Staining Buffer  
 RBC Lysis Buffer (10X)  
 TruStain fcX™ (anti-mouse CD16/32)

**Clone**  
 RTK2758

93

**Application**  
 FC, ICFC  
 FC, ICC, ICFC  
 FC, ICFC  
 FC



For research use only. Not for diagnostic use. Not for resale. BioLegend will not be held responsible for patent infringement or other violations that may occur with the use of our products.



\*These products may be covered by one or more Limited Use Label Licenses (see the BioLegend Catalog or our website, [www.biollegend.com/ordering#license](http://www.biollegend.com/ordering#license)). BioLegend products may not be transferred to third parties, resold, modified for resale, or used to manufacture commercial products, reverse engineer functionally similar materials, or to provide a service to third parties without written approval of BioLegend. By use of these products you accept the terms and conditions of all applicable Limited Use Label Licenses. Unless otherwise indicated, these products are for research use only and are not intended for human or animal diagnostic, therapeutic or commercial use.