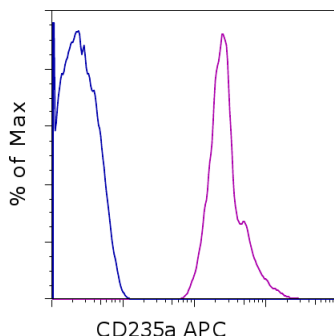


## Anti-Human CD235a (Glycophorin A) APC

Catalog Number: 17-9987

RUO: For Research Use Only. Not for use in diagnostic procedures.



Staining of normal human peripheral blood cells with Mouse IgG2b kappa Isotype Control APC (cat. 17-4732) (blue histogram) or Anti-Human CD235a (Glycophorin A) APC (purple histogram). Non-leukocytes were used for analysis.

### Product Information

**Contents:** Anti-Human CD235a (Glycophorin A) APC

**Catalog Number:** 17-9987

**Clone:** HIR2 (also GA-R2)

**Concentration:** 5  $\mu$ L (0.015  $\mu$ g)

**Host/Isotype:** Mouse IgG2b, kappa

**Formulation:** aqueous buffer, 0.09% sodium azide, may contain carrier protein/stabilizer

**Temperature Limitation:** Store at 2-8°C. Do not freeze. Light sensitive material.

**Batch Code:** Refer to vial

**Use By:** Refer to vial

### Description

The HIR2 monoclonal antibody reacts with human glycophorin A, a sialoglycoprotein expressed by erythroid precursors and mature circulating red cells.

### Applications Reported

This HIR2 (also GA-R2) antibody has been reported for use in flow cytometric analysis.

### Applications Tested

This HIR2 (also GA-R2) antibody has been pre-titrated and tested by flow cytometric analysis of normal human peripheral blood cells. This can be used at 5  $\mu$ L (0.015  $\mu$ g) per test. A test is defined as the amount ( $\mu$ g) of antibody that will stain a cell sample in a final volume of 100  $\mu$ L. Cell number should be determined empirically but can range from  $10^5$  to  $10^8$  cells/test.

### References

Kishimoto, T., A.E.G., von dem Borne, et al. eds. 1998. Leucocyte Typing VI: White Cell Differentiation Antigens. Garland Publishing Inc. London.

### Related Products

17-4732 Mouse IgG2b K Isotype Control APC

Not for further distribution without written consent.

Copyright © 2000-2012 eBioscience, Inc.

Tel: 888.999.1371 or 858.642.2058 • Fax: 858.642.2046 • [www.ebioscience.com](http://www.ebioscience.com) •  
[info@ebioscience.com](mailto:info@ebioscience.com)