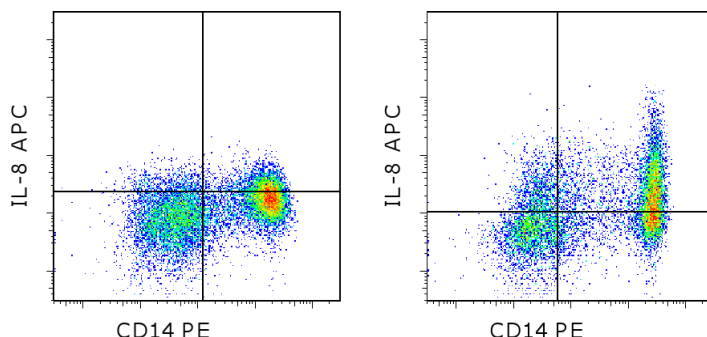


Anti-Human IL-8 APC

Catalog Number: 17-8088

Also known as: Interleukin-8, CXCL8, NAP-I

RUO: For Research Use Only. Not for use in diagnostic procedures.



Normal human peripheral blood cells unstimulated (left) or stimulated with LPS in the presence of Protein Transport Inhibitor Cocktail (cat. 00-4980), stained with Anti-Human CD14 PE (cat. 12-0149) followed by fixation and intracellular staining with and Anti-Human IL-8 APC. Cells in the monocyte gate were used for analysis.

Product Information

Contents: Anti-Human IL-8 APC
Catalog Number: 17-8088
Clone: 8CH
Concentration: 5 µL (0.015 µg)/test
Host/Isotype: Mouse IgG1, kappa

Formulation: aqueous buffer, 0.09% sodium azide, may contain carrier protein/stabilizer
Temperature Limitation: Store at 2-8°C. Do not freeze. Light-sensitive material.
Batch Code: Refer to vial
Use By: Refer to vial

Description

This 8CH monoclonal antibody reacts with human IL-8 (CXCL8), a pro-inflammatory CXC chemokine. It is synthesized as a 99 amino acid precursor protein that is further processed into one of four isoforms, with the most common being 72 or 77 amino acids in length. IL-8(77) is secreted primarily by endothelial cells and is thought to be a less potent neutrophil activator than the other forms. It is present at high levels during fetal development, where it mediates angiogenesis rather than inflammation. The predominant form present in adults is IL-8(72), which is expressed by monocytes, macrophages, epithelial cells, and fibroblasts in response to inflammatory stimuli, environmental stress, and steroid hormones. IL-8(72) is essential for the activation and recruitment of neutrophils to sites of inflammation, and has also been found to influence T cell migration. Signaling occurs through the G-protein coupled receptors CXCR1 or CXCR2. IL-8 transcripts are often upregulated in tumors, and it is associated with tumor angiogenesis and metastasis.

Applications Reported

This 8CH antibody has been reported for use in intracellular staining followed by flow cytometric analysis.

Applications Tested

This 8CH antibody has been pre-titrated and tested by intracellular staining followed by flow cytometric analysis. This can be used at 5 µL (0.015 µg) per test. A test is defined as the amount (µg) of antibody that will stain a cell sample in a final volume of 100 µL. Cell number should be determined empirically but can range from 10⁵ to 10⁸ cells/test.

References

Maheshwari A, Voitenok NN, Akalovich S, Shaik SS, Randolph DA, Sims B, Patel RP, Killingsworth CR, Fallon MB, Ohls RK. Developmental changes in circulating IL-8/CXCL8 isoforms in neonates. *Cytokine*. 2009 Apr;46(1):12-6.

Tajima A, Iwase T, Shinji H, Seki K, Mizunoe Y. Inhibition of endothelial interleukin-8 production and neutrophil transmigration by Staphylococcus aureus beta-hemolysin. *Infect Immun*. 2009 Jan;77(1):327-34.

Waugh DJ, Wilson C. The interleukin-8 pathway in cancer. *Clin Cancer Res*. 2008 Nov 1;14(21):6735-41.

Not for further distribution without written consent.

Copyright © 2000-2012 eBioscience, Inc.

Tel: 888.999.1371 or 858.642.2058 • Fax: 858.642.2046 • www.ebioscience.com • info@ebioscience.com

Anti-Human IL-8 APC

Catalog Number: 17-8088

Also known as: Interleukin-8, CXCL8, NAP-I

RUO: For Research Use Only. Not for use in diagnostic procedures.

Baggiolini M, Walz A, and Kunkel SL. Neutrophil-activating peptide-1/interleukin 8, a novel cytokine that activates neutrophils. J Clin Invest. 1989 Oct;84(4):1045-9.

Related Products

00-4980 Protein Transport Inhibitor Cocktail (500X)

11-0149 Anti-Human CD14 FITC (61D3)

11-1819 Anti-Human CD181 (CXCR1) FITC (eBio8F1-1-4 (8F1-1-4))

12-1829 Anti-Human CD182 (CXCR2) PE (eBio5E8-C7-F10 (5E8-C7-F10))

14-8319 Human IFN gamma Recombinant Protein

17-4714 Mouse IgG1 K Isotype Control APC (P3.6.2.8.1)

88-7087 Human IL-8 ELISA Ready-SET-Go!® (To Be Discontinued. Refer to 2nd Generation RSG Version: cat. 88-8086)

BMS204/3CE* Human IL-8 Platinum ELISA

BMS204/3INSTCE* Human IL-8 Instant ELISA

BMS8204FF* Human IL-8 FlowCytomix Simplex