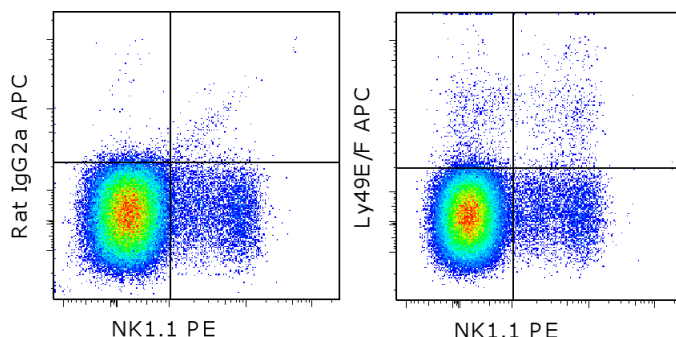


Anti-Mouse Ly-49E/F APC

Catalog Number: 17-5848

Also known as: Ly49E/F, Ly49E, Ly49F

RUO: For Research Use Only. Not for use in diagnostic procedures.



Staining of C57BL/6 splenocytes with Anti-Mouse NK1.1 PE (cat. 12-5941) and 0.125 ug of Rat IgG2a kappa Isotype Control APC (cat. 17-4321) (left) or 0.125 ug of Anti-Mouse Ly-49E/F APC (right). Total viable cells were used for analysis.

Product Information



Contents: Anti-Mouse Ly-49E/F APC

Catalog Number: 17-5848

Clone: CM4

Concentration: 0.2 mg/mL

Host/Isotype: Rat IgG2a



Formulation: aqueous buffer, 0.09% sodium azide, may contain carrier protein/stabilizer

Temperature Limitation: Store at 2-8°C. Do not freeze. Light sensitive material.



Batch Code: Refer to vial



Use By: Refer to vial

Description

This CM4 monoclonal antibody reacts with a subset of mouse Ly49 receptors, specifically Ly49E and Ly49F. The Ly49 family of receptors are clustered in the Natural Killer Cell complex on chromosome 6. Expression is confined to NK cell, lymphocytes that play a key role in protection from infection and malignant diseases as well as graft rejection and autoimmune diseases. Ly49E is unique from other family members in that it contains an ITIM (immunoreceptor tyrosine-based inhibitory motif) domain and is expressed on all mouse strains. Developmentally Ly49E is one of the first markers detected on NK cells but expression decreases after birth to about 1% of NK cells in the adult spleen. Upon stimulation, expression can again be induced on Ly49E negative cells. The CM4 antibody is a useful reagent for the characterization of Ly49E expression when used in combination with other Ly49 antibodies such as 14B11 (Ly49C/I/F/H), 3D10 (Ly49C), YLI-90 (Ly49I), and A1 (Ly49A).

Applications Reported

This CM4 antibody has been reported for use in flow cytometric analysis.

Applications Tested

This CM4 antibody has been tested by flow cytometric analysis of mouse splenocytes. This can be used at less than or equal to 0.25 µg per test. A test is defined as the amount (ug) of antibody that will stain a cell sample in a final volume of 100 µL. Cell number should be determined empirically but can range from 10⁵ to 10⁸ cells/test. It is recommended that the antibody be carefully titrated for optimal performance in the assay of interest.

References

Gays F, Martin K, Kenefeck R, Aust JG, Brooks CG. Multiple cytokines regulate the NK gene complex-encoded receptor repertoire of mature NK cells and T cells. *J Immunol.* 2005 Sep 1;175(5):2938-47. (CM4, FC, PubMed)

Stevenaert F, Van Beneden K, De Creus A, Debacker V, Plum J, Leclercq G. Ly49E expression points toward overlapping, but distinct, natural killer (NK) cell differentiation kinetics and potential of fetal versus adult lymphoid progenitors. *J Leukoc Biol.* 2003 Jun;73(6):731-8.

Not for further distribution without written consent.

Copyright © 2000-2012 eBioscience, Inc.

Tel: 888.999.1371 or 858.642.2058 • Fax: 858.642.2046 • www.ebioscience.com • info@ebioscience.com

Anti-Mouse Ly-49E/F APC

Catalog Number: 17-5848

Also known as: Ly49E/F, Ly49E, Ly49F

RUO: For Research Use Only. Not for use in diagnostic procedures.

Van Beneden K, De Creus A, Stevenaert F, Debacker V, Plum J, Leclercq G. Expression of inhibitory receptors Ly49E and CD94/NKG2 on fetal thymic and adult epidermal TCR V gamma 3 lymphocytes. J Immunol. 2002 Apr 1;168(7):3295-302.

Related Products

12-5941 Anti-Mouse NK1.1 PE (PK136)

17-4321 Rat IgG2a K Isotype Control APC (eBR2a)