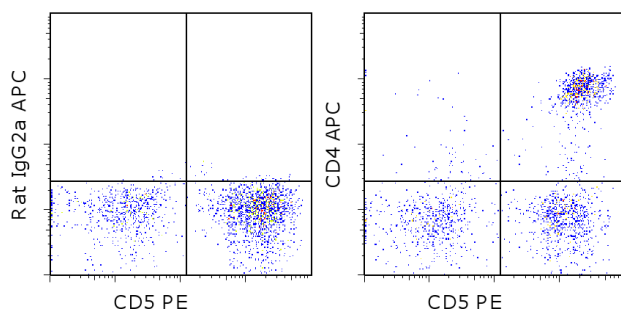


Anti-Canine CD4 APC

Catalog Number: 17-5040

RUO: For Research Use Only. Not for use in diagnostic procedures.



Staining of normal canine peripheral blood cells with Anti-Canine CD5 PE (cat. 12-5050) and Rat IgG2a K Isotype Control APC (cat. 17-4321) (left) or Anti-Canine CD4 APC (right). Cells in the lymphocyte gate were used for analysis.

Product Information



Contents: Anti-Canine CD4 APC

Catalog Number: 17-5040

Clone: YKIX302.9

Concentration: 5 μ L (0.125 μ g)/test

Host/Isotype: Rat IgG2a, kappa



Formulation: aqueous buffer, 0.09% sodium azide, may contain carrier protein/stabilizer

Temperature Limitation: Store at 2-8°C. Do not freeze. Light-sensitive material.

Batch Code: Refer to vial



Use By: Refer to vial

Contains sodium azide

Description

The YKIX302.9 monoclonal antibody reacts with canine CD4, a cell surface receptor expressed on a majority of thymocytes, a subpopulation of mature T cells and dendritic cells. In dogs, CD4 is also highly expressed on neutrophils. CD4 binds to MHC class II on the surface of antigen presenting cells and plays an important role in T cell development and homeostasis.

This YKIX302.9 monoclonal antibody has been reported to block MHC II-restricted T cell responses *in vivo* and *in vitro*.

Applications Reported

This YKIX302.9 antibody has been reported for use in flow cytometric analysis.

Applications Tested

This YKIX302.9 antibody has been pre-titrated and tested by flow cytometric analysis of normal canine peripheral blood cells. This can be used at 5 μ L (0.125 μ g) per test. A test is defined as the amount (μ g) of antibody that will stain a cell sample in a final volume of 100 μ L. Cell number should be determined empirically but can range from 10^5 to 10^8 cells/test.

References

Bismarck D, Schütze N, Moore P, Büttner M, Alber G, Buttlar HV. Canine CD4(+)CD8(+) double positive T cells in peripheral blood have features of activated T cells. *Vet Immunol Immunopathol.* 2012 Oct 15;149(3-4):157-66 (YKIX302.9, FC, Pubmed)

Cobbold S, Metcalfe S. Monoclonal antibodies that define canine homologues of human CD antigens: summary of the First International Canine Leukocyte Antigen Workshop (CLAW). *Tissue Antigens.* 1994 Mar;43(3):137-54. (YKIX302.9, FC)

Watson CJ, Cobbold SP, Davies HS, Rebello PR, Thiru S, McNair R, Rasmussen A, Waldmann H, Calne RY, Metcalfe SM. Immunosuppression of canine renal allograft recipients by CD4 and CD8 monoclonal antibodies. *Tissue*

Not for further distribution without written consent.

Copyright © 2000-2012 eBioscience, Inc.

Tel: 888.999.1371 or 858.642.2058 • Fax: 858.642.2046 • www.ebioscience.com • info@ebioscience.com

Anti-Canine CD4 APC

Catalog Number: 17-5040

RUO: For Research Use Only. Not for use in diagnostic procedures.

Antigens. 1994 Mar;43(3):155-62. (YKIX302.9, FA)

Related Products

11-0250 Anti-Canine CD25 FITC (P4A10)

45-5773 Anti-Mouse/Rat Foxp3 PerCP-Cy5.5 (FJK-16s)