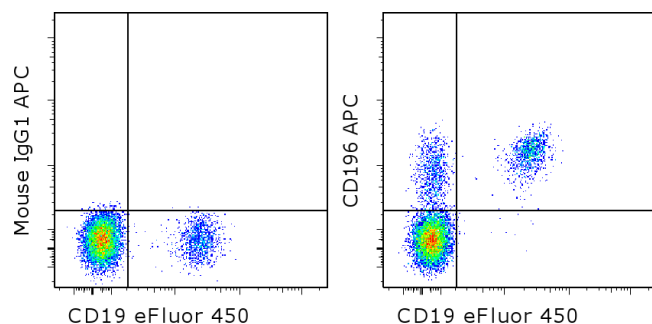


Anti-Human CD196 (CCR6) APC

Catalog Number: 17-1969

RUO: For Research Use Only. Not for use in diagnostic procedures.



Staining of normal human peripheral blood cells with Anti-Human CD19 eFluor[®] 450 (cat. 48-0199) and Mouse IgG1 K Isotype Control APC (cat. 17-4714) (left) or Anti-Human CD196 (CCR6) APC (right). Cells in the lymphocyte gate were used for analysis.

Product Information

Contents: Anti-Human CD196 (CCR6) APC
Catalog Number: 17-1969
Clone: R6H1
Concentration: 5 μ L (0.25 μ g)/test
Host/Isotype: Mouse IgG1, kappa

Formulation: aqueous buffer, 0.09% sodium azide, may contain carrier protein/stabilizer
Temperature Limitation: Store at 2-8°C. Do not freeze. Light-sensitive material.
Batch Code: Refer to vial
Use By: Refer to vial

Description

This R6H1 monoclonal antibody reacts with CD196 (also known as CCR6), a seven transmembrane G protein-coupled receptor expressed on T, B, dendritic, natural killer, and Langerhans cells. This CC chemokine receptor uniquely binds MIP-3a/CCL20, a chemoattractant for dendritic cells, effector/memory T cells, and B cells. CD196 is also involved in host defense and inflammation at epithelial sites. Furthermore, this receptor has been implicated in Th17 differentiation and CD4⁺FoxP3⁺ regulatory T cell development.

Applications Reported

This R6H1 antibody has been reported for use in flow cytometric analysis.

Applications Tested

This R6H1 antibody has been pre-titrated and tested by flow cytometric analysis of normal human peripheral blood cells. This can be used at 5 μ L (0.25 μ g) per test. A test is defined as the amount (μ g) of antibody that will stain a cell sample in a final volume of 100 μ L. Cell number should be determined empirically but can range from 10⁵ to 10⁸ cells/test.

References

Liu H, Rohowsky-Kochan C. Regulation of IL-17 in human CCR6⁺ effector memory T cells. J Immunol. 2008 Jun 15;180(12):7948-57

Singh SP, Zhang HH, Foley JF, Hedrick MN, Farber JM. Human T cells that are able to produce IL-17 express the chemokine receptor CCR6. J Immunol. 2008 Jan 1;180(1):214-21

Lim HW, Lee J, Hillsamer P, Kim CH. Human Th17 cells share major trafficking receptors with both polarized effector T cells and FOXP3⁺ regulatory T cells. J Immunol. 2008 Jan 1;180(1):122-9

Shutyser E, Struyf S, Van Damme J. The CC chemokine CCL20 and its receptor CCR6. Cytokine Growth Factor Rev. 2003 Oct;14(5):409-26.

Not for further distribution without written consent.

Copyright © 2000-2012 eBioscience, Inc.

Tel: 888.999.1371 or 858.642.2058 • Fax: 858.642.2046 • www.ebioscience.com • info@ebioscience.com

Anti-Human CD196 (CCR6) APC

Catalog Number: 17-1969

RUO: For Research Use Only. Not for use in diagnostic procedures.

Carramolino L, Kremer L, Goya I, Varona R, Buesa JM, Gutiérrez J, Zaballos A, Martínez-A C, Márquez G. Down-regulation of the beta-chemokine receptor CCR6 in dendritic cells mediated by TNF-alpha and IL-4. J Leukoc Biol. 1999 Nov;66(5):837-44. (clone R6H1, FC, Pubmed)

Related Products

12-7179 Anti-Human IL-17A PE (eBio64DEC17)

17-4714 Mouse IgG1 K Isotype Control APC (P3.6.2.8.1)

48-0199 Anti-Human CD19 eFluor® 450 (HIB19)