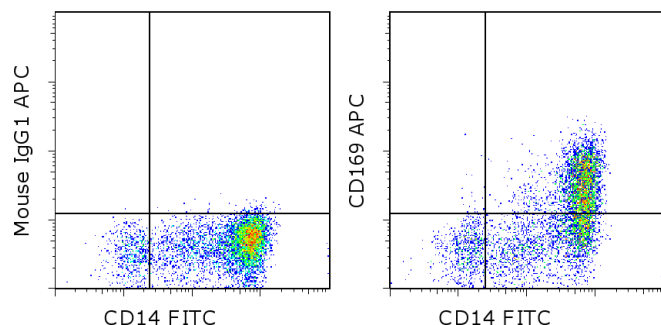


Anti-Human CD169 (Siglec-1) APC

Catalog Number: 17-1699

Also known as: Sialoadhesin

RUO: For Research Use Only. Not for use in diagnostic procedures.



Staining of 3-day cultured normal human peripheral blood cells with Anti-Human CD14 FITC (cat. 11-0149) and Mouse IgG1 K Isotype Control APC (cat. 17-4714) (left) or Anti-Human CD169 (Siglec-1) APC (right). Cells in the monocyte gate were used for analysis.

Product Information

Contents: Anti-Human CD169 (Siglec-1) APC



Catalog Number: 17-1699

Clone: 7-239

Concentration: 5 µL (0.06 µg)/test

Host/Isotype: Mouse IgG1

Formulation: aqueous buffer, 0.09% sodium azide, may contain carrier protein/stabilizer

Temperature Limitation: Store at 2-8°C. Do not freeze. Light-sensitive material.

Batch Code: Refer to vial

Use By: Refer to vial



LOT



Description

This 7-239 monoclonal antibody reacts with human CD169, also known as Siglec-1 and Sialoadhesin. This type I transmembrane protein is a member of the sialic acid binding Ig-like lectin (Siglec) family. Expressed on macrophages and dendritic cells in peripheral blood, lymph nodes, and spleen in humans, CD169 binds glycoproteins and glycolipids containing N-acetylneuraminyl alpha 2-3-galactose. CD169 expression can also be induced on CD14⁺ monocytes by interferon-alpha and interferon-gamma to mediate HIV-1 infection. Finally, CD169 has also been shown to be involved in antigen presentation to invariant NK T cells.

This monoclonal antibody has been reported to inhibit erythrocyte binding to CD169-expressing cells.

Applications Reported

This 7-239 antibody has been reported for use in flow cytometric analysis.

Applications Tested

This 7-239 antibody has been pre-titrated and tested by flow cytometric analysis of cultured human peripheral blood cells. This can be used at 5 µL (0.06 µg) per test. A test is defined as the amount (µg) of antibody that will stain a cell sample in a final volume of 100 µL. Cell number should be determined empirically but can range from 10⁵ to 10⁸ cells/test.

References

Barral P, Polzella P, Bruckbauer A, van Rooijen N, Besra GS, Cerundolo V, Batista FD. CD169(+) macrophages present lipid antigens to mediate early activation of iNKT cells in lymph nodes. *Nat Immunol.* 2010 Apr;11(4):303-12.

Rempel H, Calosing C, Sun B, Pulliam L. Sialoadhesin expressed on IFN-induced monocytes binds HIV-1 and enhances infectivity. *PLoS One.* 2008 Apr 16;3(4):e1967.

Kirchberger S, Majdic O, Steinberger P, Blüml S, Pfistershammer K, Zlabinger G, Deszcz L, Kuechler E, Knapp W, Stöckl J. Human rhinoviruses inhibit the accessory function of dendritic cells by inducing sialoadhesin and B7-H1

Not for further distribution without written consent.

Copyright © 2000-2012 eBioscience, Inc.

Tel: 888.999.1371 or 858.642.2058 • Fax: 858.642.2046 • www.ebioscience.com • info@ebioscience.com

Anti-Human CD169 (Siglec-1) APC

Catalog Number: 17-1699

Also known as: Sialoadhesin

RUO: For Research Use Only. Not for use in diagnostic procedures.

expression. J Immunol. 2005 Jul 15;175(2):1145-52. (7-239, FC)

Related Products

00-6993 7-AAD Viability Staining Solution

11-0149 Anti-Human CD14 FITC (61D3)

17-4714 Mouse IgG1 K Isotype Control APC (P3.6.2.8.1)