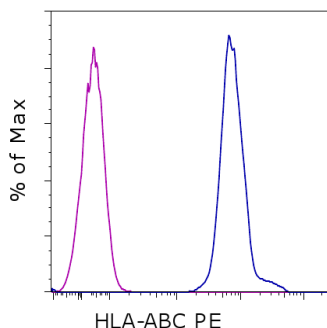


Anti-Human HLA-ABC PE

Catalog Number: 12-9983

RUO: For Research Use Only. Not for use in diagnostic procedures.



Staining of normal human peripheral blood cells with Mouse IgG2a K Isotype Control PE (cat. 12-4724) (blue histogram) or Anti-Human HLA-ABC PE (purple histogram). Cells in the lymphocyte gate were used for analysis.

Product Information

Contents: Anti-Human HLA-ABC PE
Catalog Number: 12-9983
Clone: W6/32
Concentration: 5 μ L (0.25 μ g)/test
Host/Isotype: Mouse IgG2a, kappa

Formulation: aqueous buffer, 0.09% sodium azide, may contain carrier protein/stabilizer
Temperature Limitation: Store at 2-8°C. Do not freeze. Light sensitive material.
Batch Code: Refer to vial
Use By: Refer to vial

Description

The W6/32 monoclonal antibody reacts with the human major histocompatibility complex (MHC) class I, HLA-A, B, C. MHC class I antigens associated with beta 2-microglobulin are expressed by all human nucleated cells and are central in cell-mediated immune response and tumor surveillance. W6/32 mAb recognizes a non-polymorphic epitope shared among products of the HLA-A, B, and C loci and immunoprecipitates both 43 kDa and 11-12 kDa chains. Crossreactivity is also seen in baboon, rhesus and cynomolgus monkey.

Applications Reported

The W6/32 antibody has been reported for use in flow cytometric analysis.

Applications Tested

This W6/32 antibody has been pre-titrated and tested by flow cytometric analysis of human peripheral blood leukocytes. This can be used at 5 μ L (0.25 μ g) per test. A test is defined as the amount (μ g) of antibody that will stain a cell sample in a final volume of 100 μ L. Cell number should be determined empirically but can range from 10^5 to 10^8 cells/test.

References

Barnstable, C. J., W. F. Bodmer, et al. 1978. Production of monoclonal antibodies to group A erythrocytes, HLA and other human cell surface antigens-new tools for genetic analysis. *Cell* 14(1): 9-20.

Koene G, Arts-Hilkes, et al. 2004. High level of aneuploidy of chromosome 6 by FISH analysis of head and neck squamous cell carcinoma: limited applicability of LOH analysis to define HLA loss. *Hum Immunol.* 65(12):1455-62. (IHC frozen, PubMed)

Goldman-Wohl D, Ariel I, et al. 2001. A study of human leukocyte antigen G expression in hydatidiform moles. *Am J Obstet Gynecol.* 185(2):476-80. (IHC frozen, PubMed)

Stern PL, Beresford N, et al. 1987. Class I-like MHC molecules expressed by baboon placental syncytiotrophoblast. *J Immunol.* 138(4):1088-91. (baboon cross-reactivity, PubMed)

Not for further distribution without written consent.

Copyright © 2000-2012 eBioscience, Inc.

Tel: 888.999.1371 or 858.642.2058 • Fax: 858.642.2046 • www.ebioscience.com •
info@ebioscience.com

Anti-Human HLA-ABC PE

Catalog Number: 12-9983

RUO: For Research Use Only. Not for use in diagnostic procedures.

Related Products

12-4724 Mouse IgG2a K Isotype Control PE

Not for further distribution without written consent.

Copyright © 2000-2012 eBioscience, Inc.

Tel: 888.999.1371 or 858.642.2058 • Fax: 858.642.2046 • www.ebioscience.com •
info@ebioscience.com