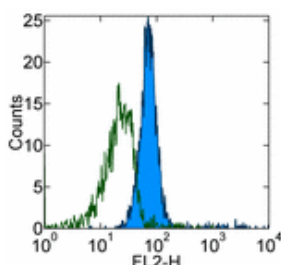


## Anti-Mouse CD281 (TLR1) PE

Catalog Number: 12-9011

Also Known As: TLR-1

RUO: For Research Use Only



Staining of A20 cells with 0.5 µg of Rat IgG2a κ Isotype Control PE (cat. 12-4321) (open histogram) or 0.5 µg of Anti-Mouse CD281 (TLR1) PE (filled histogram). Total viable cells were used for analysis.

### Product Information

Contents: Anti-Mouse CD281 (TLR1) PE


**REF** Catalog Number: 12-9011

Clone: eBioTR23 (TR23)

Concentration: 0.2 mg/ml


Host/Isotype: Rat IgG2a, κ

Formulation: aqueous buffer, 0.09% sodium azide, may contain carrier protein/stabilizer

 Temperature Limitation: Store at 2-8°C. Do not freeze. Light sensitive material.

**LOT** Batch Code: Refer to Vial

 Use By: Refer to Vial

 Caution, contains Azide

### Description

The eBioTR23 monoclonal antibody reacts with mouse Toll-like receptor 1 (TLR1, CD281). TLR1 is an approximately 98 kDa protein belonging to the Toll-like receptor family, and is closely-related to mouse TLR6 in both structure and function. Through the formation of a complex with TLR2, TLR1 is able to bind bacterially-derived triacyl lipopeptides, as well as soluble factors released from *Neisseria meningitidis*. TLR1 is expressed by macrophages and macrophages in TLR1-deficient mice display impaired production of inflammatory cytokines upon stimulation with triacyl lipopeptides and lipoproteins from mycobacteria.

### Applications Reported

This eBioTR23 (TR23) antibody has been reported for use in flow cytometric analysis.

### Applications Tested

This eBioTR23 (TR23) antibody has been tested by flow cytometric analysis of A20 cells. This can be used at less than or equal to 0.5 µg per test. A test is defined as the amount (µg) of antibody that will stain a cell sample in a final volume of 100 µL. Cell number should be determined empirically but can range from 10<sup>5</sup> to 10<sup>8</sup> cells/test. It is recommended that the antibody be carefully titrated for optimal performance in the assay of interest.

### References

Alexopoulou L, Thomas V, Schnare M, Lobet Y, Anguita J, Schoen RT, Medzhitov R, Fikrig E, Flavell RA. Hyporesponsiveness to vaccination with *Borrelia burgdorferi* OspA in humans and in TLR1- and TLR2-deficient mice. *Nat Med*. 2002 Aug;8(8):878-84.

Wyllie DH, Kiss-Toth E, Visintin A, Smith SC, Boussof S, Segal DM, Duff GW, Dower SK. Evidence for an accessory protein function for Toll-like receptor 1 in anti-bacterial responses. *J Immunol*. 2000 Dec 15;165(12):7125-32.

Takeuchi O, Sato S, Horiuchi T, Hoshino K, Takeda K, Dong Z, Modlin RL, Akira S. Cutting edge: role of Toll-like receptor 1 in mediating immune response to microbial lipoproteins. *J Immunol*. 2002 Jul 1;169(1):10-4.

### Related Products

12-4321 Rat IgG2a K Isotype Control PE

12-9911 Anti-Human CD281 (TLR1) PE (GD2.F4)

14-8185 B18R Recombinant Protein

34-8185 B18R Recombinant Protein Carrier-Free

---

Not for further distribution without written consent.

Copyright © 2000-2010 eBioscience, Inc.

Tel: 888.999.1371 or 858.642.2058 • Fax: 858.642.2046 • [www.eBioscience.com](http://www.eBioscience.com) • [info@eBioscience.com](mailto:info@eBioscience.com)