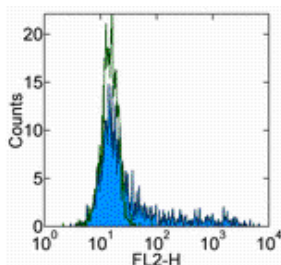


Anti-CCL2 (MCP-1) PE

Catalog Number: 12-7096

Also Known As: MCP1, MCAF, CCL-2

RUO: For Research Use Only. Not for use in diagnostic procedures.



Staining of 24-hour LPS-stimulated normal human peripheral blood cells with 0.25 ug of Armenian Hamster IgG Isotype Control PE (cat. 12-4888) (open histogram) or 0.25 ug of Anti-CCL2 (MCP-1) PE (filled histogram). Cells in the monocyte gate were used for analysis.

Product Information

Contents: Anti-CCL2 (MCP-1) PE

REF **Catalog Number:** 12-7096

Clone: 2H5

Concentration:

(ug): 0.2 mg/mL

(test*): 5 µL (0.25 µg)/test

Host/Isotype: Armenian Hamster IgG

Formulation: aqueous buffer, 0.09% sodium azide, may contain carrier protein/stabilizer



Temperature Limitation: Store at 2-8°C. Do not freeze. Light sensitive material.



Batch Code: Refer to Vial



Use By: Refer to Vial



Caution, contains Azide

Description

The 2H5 monoclonal antibody reacts with mouse, rat, and human monocyte chemoattractant protein-1 (MCP-1), also known as CCL2 and MCAF.

Applications Reported

The 2H5 antibody has been reported for use in ELISA, intracellular staining for flow cytometric analysis, and neutralization. (Please use Functional Grade purified 2H5 antibody, cat. 16-7096, in functional assays.)

Applications Tested

This 2H5 antibody is tested by flow cytometric analysis of fixed permeabilized LPS-stimulated thioglycolated mouse PEC cells. It is offered in 2 formats:

- µg size: has been tested by flow cytometric analysis of fixed permeabilized LPS-stimulated thioglycolated mouse PEC cells. This can be used at less than or equal to 0.25 µg per test. A test is defined as the amount (µg) of antibody that will stain a cell sample in a final volume of 100 µL. Cell number should be determined empirically but can range from 10⁵ to 10⁸ cells/test. It is recommended that the antibody be carefully titrated for optimal performance in the assay of interest.

- test size: has been pre-titrated and tested by flow cytometric analysis of fixed permeabilized LPS-stimulated thioglycolated mouse PEC cells. This can be used at 5 µL (0.25 µg) per test. A test is defined as the amount (µg) of antibody that will stain a cell sample in a final volume of 100 µL. Cell number should be determined empirically but can range from 10⁵ to 10⁸ cells/test.

References

Luo, Y., et al. 1994. J Immunol. 153: 3708. [Antibody generation, ELISA, immunoblotting, in vitro neutralization]

Morrison, B., et al. 2003. J. Clin. Invest. 112: 1862. [In vivo neutralization]

Taal MW, Chertow GM, et al. 2001. Mechanisms underlying renoprotection during renin-angiotensin system blockade. Am J Physiol Renal Physiol. 280(2):F343-55. (2H5, IHC frozen in rat, PubMed)

Luo Y, Fischer FR, et al. 2000. Macrophage inflammatory protein-2 and KC induce chemokine production by mouse astrocytes. J Immunol. 165(7):4015-23. (2H5, IHC frozen, PubMed)

Related Products

00-8222 IC Fixation Buffer

00-8333 Permeabilization Buffer (10X)
12-4888 Armenian Hamster IgG Isotype Control PE (eBio299Arm)
14-7099 Anti-Human CCL2 (MCP-1) Purified (5D3-F7)
16-7099 Anti-Human CCL2 (MCP-1) Functional Grade Purified (5D3-F7)
17-7099 Anti-Human CCL2 (MCP-1) APC (5D3-F7)
88-8823 Fixation & Permeabilization Buffers

Not for further distribution without written consent.

Copyright © 2000-2010 eBioscience, Inc.

Tel: 888.999.1371 or 858.642.2058 • Fax: 858.642.2046 • www.eBioscience.com • info@eBioscience.com