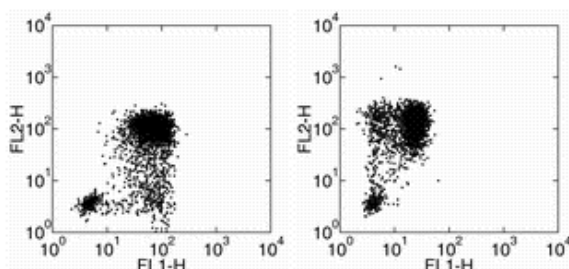


Anti-Human IL-1 beta PE

Catalog Number: 12-7018

Also Known As: Interleukin-1 beta,

RUO: For Research Use Only. Not for use in diagnostic procedures.



Normal human peripheral blood cells were stimulated with LPS in the presence of Brefeldin A for 4 hours. (Left) The cells were surface stained with Anti-Human CD14 PE (cat. 12-0149) and intracellularly stained with Anti-Human IL-1 beta FITC. (Right) The cells were surface stained with Anti-Human CD14 FITC (cat. 11-0149) and intracellularly stained with Anti-Human IL-1 beta PE.

Product Information

Contents: Anti-Human IL-1 beta PE

REF **Catalog Number:** 12-7018

Clone: CRM56


Concentration:

(ug): 0.2 mg/mL


(test*): 5 uL (0.125 ug)/test


Host/Isotype: Mouse IgG1

Formulation: aqueous buffer, 0.09% sodium azide, may contain carrier protein/stabilizer

 **Temperature Limitation:** Store at 2-8°C. Do not freeze. Light sensitive material.

LOT **Batch Code:** Refer to Vial

 **Use By:** Refer to Vial

 **Caution, contains Azide**

Description

The CRM56 antibody reacts with human and baboon interleukin-1 beta; (IL-1 beta). IL-1 beta is a 17 kDa factor secreted primarily by monocytes. IL-1 has effects on T-helper cells, inducing IL-2 secretion and expression of IL-2 receptors. IL-1 has effects on B cells, promoting cell proliferation and immunoglobulin synthesis.

Applications Reported

The CRM56 antibody has been reported for use in intracellular flow cytometric analysis.

Applications Tested

This CRM56 antibody is offered in 2 formats:

- μ g size: has been tested by intracellular flow cytometric analysis. This can be used at less than or equal to 0.25 μ g per test. A test is defined as the amount (μ g) of antibody that will stain a cell sample in a final volume of 100 μ L. Cell number should be determined empirically but can range from 10^5 to 10^8 cells/test. It is recommended that the antibody be carefully titrated for optimal performance in the assay of interest.

- test size: has been pre-titrated and tested by intracellular flow cytometric analysis. This can be used at 5 μ L (0.125 μ g) per test. A test is defined as the amount (μ g) of antibody that will stain a cell sample in a final volume of 100 μ L. Cell number should be determined empirically but can range from 10^5 to 10^8 cells/test.

Related Products

11-0149 Anti-Human CD14 FITC (61D3)

12-4714 Mouse IgG1 K Isotype Control PE (P3.6.2.1)

88-8823 Fixation & Permeabilization Buffers

Not for further distribution without written consent.

Copyright © 2000-2010 eBioscience, Inc.

Tel: 888.999.1371 or 858.642.2058 • Fax: 858.642.2046 • www.eBioscience.com • info@eBioscience.com