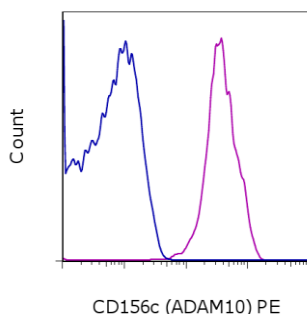


Anti-Human CD156c (ADAM10) PE

Catalog Number: 12-6319

Also known as: Disintegrin and metalloproteinase domain-containing protein 10

RUO: For Research Use Only. Not for use in diagnostic procedures.



Normal human peripheral blood cells were fixed and permeabilized using the Fixation & Permeabilization Buffers (cat. 88-8823) and then stained with either Mouse IgG1 K Isotype Control PE (cat. 12-4714) (blue histogram) or Anti-Human CD156c (ADAM10) PE (purple histogram). Cells in the lymphocyte gate were used for analysis.

Product Information

Contents: Anti-Human CD156c (ADAM10) PE



Catalog Number: 12-6319

Clone: OV1F12

Concentration: 5 μ L (0.125 μ g)/test

Host/Isotype: Mouse IgG1, kappa



Formulation: aqueous buffer, 0.09% sodium azide, may contain carrier protein/stabilizer

Temperature Limitation: Store at 2-8°C. Do not freeze. Light-sensitive material.



Batch Code: Refer to vial



Use By: Refer to vial

Description

This OV1F12 (1F12HE) monoclonal antibody reacts with human CD156c, which is also known as a disintegrin and metalloproteinase domain-containing protein (ADAM) 10. This type I transmembrane glycoprotein is expressed ubiquitously on hematopoietic and non-hematopoietic cell types. Studies demonstrate that CD156c expression is regulated by PAX2 in cancer cells. CD156c plays a critical role in hematopoiesis, including lymphocyte development, and autoimmunity by regulating the shedding and secretion of various receptors and chemokines, including Notch, CD23, CXCL16, and the IL-6R. Finally, deregulated CD156c expression has been associated with T-cell acute lymphoblastic lymphoma (T-ALL) and Alzheimer's disease.

Applications Reported

This OV1F12 antibody has been reported for use in intracellular staining followed by flow cytometric analysis.

Applications Tested

This OV1F12 antibody has been pre-titrated and tested by flow cytometric analysis of normal human peripheral blood cells. This can be used at 5 μ L (0.125 μ g) per test. A test is defined as the amount (μ g) of antibody that will stain a cell sample in a final volume of 100 μ L. Cell number should be determined empirically but can range from 10^5 to 10^8 cells/test.

References

Endres K, Fahrenholz F. Regulation of alpha-secretase ADAM10 expression and activity. *Exp Brain Res*. 2011 Oct 4.

Gibb DR, Saleem SJ, Chaimowitz NS, Mathews J, Conrad DH. The emergence of ADAM10 as a regulator of lymphocyte development and autoimmunity. *Mol Immunol*. 2011 Jun;48(11):1319-27.

Sulis ML, Saftig P, Ferrando AA. Redundancy and specificity of the metalloprotease system mediating oncogenic NOTCH1 activation in T-ALL. *Leukemia*. 2011 Oct;25(10):1564-9.

Related Products

Not for further distribution without written consent.

Copyright © 2000-2012 eBioscience, Inc.

Tel: 888.999.1371 or 858.642.2058 • Fax: 858.642.2046 • www.ebioscience.com • info@ebioscience.com

Anti-Human CD156c (ADAM10) PE

Catalog Number: 12-6319

Also known as: Disintegrin and metalloproteinase domain-containing protein 10

RUO: For Research Use Only. Not for use in diagnostic procedures.

12-4714 Mouse IgG1 K Isotype Control PE (P3.6.2.8.1)

88-8823 Fixation & Permeabilization Buffers