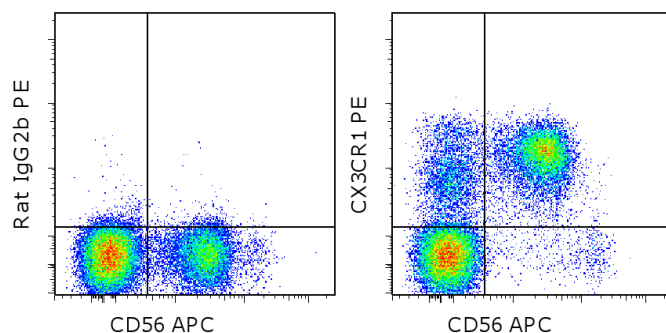


## Anti-Human CX3CR1 PE

**Catalog Number:** 12-6099

**Also known as:** Chemokine C-X3-C receptor 1, V28

**RUO: For Research Use Only. Not for use in diagnostic procedures.**



Staining of normal human peripheral blood cells with Anti-Human CD56 (NCAM) APC (cat. 17-0567) and Rat IgG2b K Isotype Control PE (cat. 12-4031) (left) or Anti-Human CX3CR1 PE (right). Cells in the lymphocyte gate were used for analysis.

### Product Information



**Contents:** Anti-Human CX3CR1 PE

**Catalog Number:** 12-6099

**Clone:** 2A9-1

**Concentration:** 5  $\mu$ L (0.125  $\mu$ g)/test

**Host/Isotype:** Rat IgG2b, kappa



**Formulation:** aqueous buffer, 0.09% sodium azide, may contain carrier protein/stabilizer

**Temperature Limitation:** Store at 2-8°C. Do not freeze. Light-sensitive material.

**Batch Code:** Refer to vial



**Use By:** Refer to vial

**Contains sodium azide**

### Description

This 2A9-1 monoclonal antibody reacts with human CX3CR1, which is the receptor for fractalkine, a transmembrane chemokine of the CX3C family. CX3CR1 is a seven transmembrane G protein-coupled receptor expressed on CD16+ NK cells, T cells (e.g. CD8+, CD4+, and gamma/delta), and monocytes. In non-immune cells, CX3CR1 has been found on osteoclast precursors and microglia. Little to no CX3CR1 surface expression can be detected on B cells and granulocytes. Together, fractalkine and its receptor mediate cell-cell adhesion and chemotaxis of NK cells, T cells, and monocytes. The expression of CX3CR1 has also been correlated with high levels of intracellular perforin and granzyme B.

### Applications Reported

This 2A9-1 antibody has been reported for use in flow cytometric analysis.

### Applications Tested

This 2A9-1 antibody has been pre-titrated and tested by flow cytometric analysis of normal human peripheral blood cells. This can be used at 5  $\mu$ L (0.125  $\mu$ g) per test. A test is defined as the amount ( $\mu$ g) of antibody that will stain a cell sample in a final volume of 100  $\mu$ L. Cell number should be determined empirically but can range from  $10^5$  to  $10^8$  cells/test.

### References

Koizumi K, Saitoh Y, Minami T, Takeno N, Tsuneyama K, Miyahara T, Nakayama T, Sakurai H, Takano Y, Nishimura M, Imai T, Yoshie O, Saiki I. Role of CX3CL1/Fractalkine in Osteoclast Differentiation and Bone Resorption. J Immunol. 2009 Nov 18.

Nishimura M, Umehara H, Nakayama T, Yoneda O, Hieshima K, Kakizaki M, Dohmae N, Yoshie O, Imai T. Dual functions of fractalkine/CX3C ligand 1 in trafficking of perforin+/granzyme B+ cytotoxic effector lymphocytes that are defined by CX3CR1 expression. J Immunol. 2002 Jun 15;168(12):6173-80. (2A9-1, FC, Pubmed)

Imai T, Hieshima K, Haskell C, Baba M, Nagira M, Nishimura M, Kakizaki M, Takagi S, Nomiyama H, Schall TJ,

Not for further distribution without written consent.

Copyright © 2000-2012 eBioscience, Inc.

Tel: 888.999.1371 or 858.642.2058 • Fax: 858.642.2046 • [www.ebioscience.com](http://www.ebioscience.com) • [info@ebioscience.com](mailto:info@ebioscience.com)

---

## **Anti-Human CX3CR1 PE**

**Catalog Number:** 12-6099

**Also known as:** Chemokine C-X3-C receptor 1, V28

**RUO: For Research Use Only. Not for use in diagnostic procedures.**

---

Yoshie O. Identification and molecular characterization of fractalkine receptor CX3CR1, which mediates both leukocyte migration and adhesion. Cell. 1997 Nov 14;91(4):521-30.

### **Related Products**

12-4031 Rat IgG2b K Isotype Control PE

17-0567 Anti-Human CD56 (NCAM) APC (CMSSB)