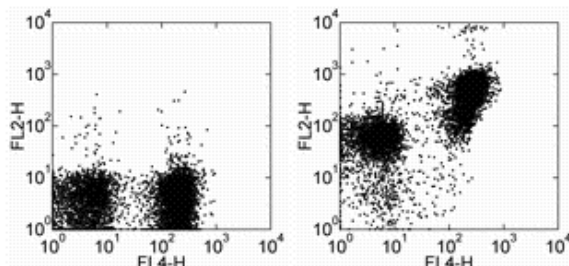


Anti-Mouse CD272 (BTLA) PE

Catalog Number: 12-5950

Also Known As: B and T lymphocyte attenuator

RUO: For Research Use Only. Not for use in diagnostic procedures.



Staining of BALB/c splenocytes with Anti-Human/Mouse CD45R (B220) APC (cat. 17-0452) and 0.125 ug of Mouse IgG1 kappa Isotype Control PE (cat. 12-4714) (left) or 0.06 ug of Anti-Mouse CD272 (BTLA) PE (right). Total viable cells were used for analysis.

Product Information

Contents: Anti-Mouse CD272 (BTLA) PE


REF **Catalog Number:** 12-5950

Clone: 6F7

Concentration: 0.2 mg/ml

Host/Isotype: Mouse IgG1, kappa

Formulation: aqueous buffer, 0.09% sodium azide, may contain carrier protein/stabilizer

 **Temperature Limitation:** Store at 2-8°C. Do not freeze. Light sensitive material.

LOT **Batch Code:** Refer to Vial

 **Use By:** Refer to Vial

 **Caution, contains Azide**

Description

The BTLA antibody reacts with mouse BTLA, B and T lymphocyte attenuator. BTLA is expressed by peripheral lymphocytes, splenic macrophages, developing B cells in the bone marrow and developing T cells in the thymus and mature, but not immature bone marrow-derived dendritic cells. BTLA has been implicated as a negative regulator of the activation and/or function of various hemopoietic cell types. It is reported that BTLA binds to B7-H4, but further studies are needed to confirm this interaction.

Note: The anti-mouse BTLA monoclonal antibody 6F7 is reported to stain CD4⁺ and CD8⁺ single-positive (SP) thymocytes (Hurchla et al). However, other anti-mouse BTLA clones generated simultaneously with 6F7 (8F4, 3F9.D12, 6G3 and 6H6) do not stain SP thymocytes. It is not understood why there is a discrepancy in thymocyte staining however clones 8F4, 3F9.D12, 6G3 and 6H6 stain similar populations to 6F7 in splenocytes and bone marrow cells.

Applications Reported

This 6F7 antibody has been reported for use in flow cytometric analysis.

Applications Tested

This 6F7 antibody has been tested by flow cytometric analysis of mouse splenocytes. This can be used at less than or equal to 0.125 µg per test. A test is defined as the amount (µg) of antibody that will stain a cell sample in a final volume of 100 µL. Cell number should be determined empirically but can range from 10⁵ to 10⁸ cells/test. It is recommended that the antibody be carefully titrated for optimal performance in the assay of interest.

References

Watanabe N, Gavrieli M, Sedy JR, Yang J, Fallarino F, Loftin SK, Hurchla MA, Zimmerman N, Sim J, Zang X, Murphy TL, Russell JH, Allison JP, Murphy KM. 2003. BTLA is a lymphocyte inhibitory receptor with similarities to CTLA-4 and PD-1. *Nat Immunol.* 4 (7): 670-9.

Sedy JR, Gavrieli M, Potter KG, Hurchla MA, Lindsley RC, Hildner K, Scheu S, Pfeffer K, Ware CF, Murphy TL, Murphy KM. 2005. B and T lymphocyte attenuator regulates T cell activation through interaction with herpesvirus entry mediator. *Nat Immunol.* (6)1: 90-8.

Hurchla MA, Sedy JR, Gavrieli M, Drake CG, Murphy TL, Murphy KM. 2005. B and T Lymphocyte Attenuator exhibits structural expression polymorphisms and is highly induced in CD4⁺ T cells. *The Journal of Immunology.* 174: 3377-3385.

Related Products

12-4714 Mouse IgG1 K Isotype Control PE (P3.6.2.1)

12-5956 Anti-Mouse CD272 (BTLA) PE (8F4)

13-5956 Anti-Mouse CD272 (BTLA) Biotin (8F4)
14-5953 Anti-Mouse CD272 (BTLA) Purified (3F9.D12)
14-5954 Anti-Mouse CD272 (BTLA) Purified (6H6 (BTLA))
14-5955 Anti-Mouse CD272 (BTLA) Purified (6G3)
14-5956 Anti-Mouse CD272 (BTLA) Purified (8F4)
17-0452 Anti-Human/Mouse CD45R (B220) APC (RA3-6B2)

Not for further distribution without written consent.

Copyright © 2000-2010 eBioscience, Inc.

Tel: 888.999.1371 or 858.642.2058 • Fax: 858.642.2046 • www.eBioscience.com • info@eBioscience.com