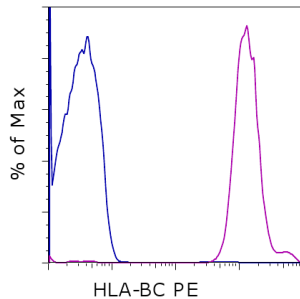


Anti-Human HLA-BC PE

Catalog Number: 12-5935

Also known as: Human Leukocyte Antigen B and C

RUO: For Research Use Only. Not for use in diagnostic procedures.



Staining of normal human peripheral blood cells with Mouse IgG2b K Isotype Control PE (cat. 12-4732) (blue histogram) or Anti-Human HLA-BC PE (purple histogram). Cells in the lymphocyte gate were used for analysis.

Product Information



Contents: Anti-Human HLA-BC PE

Catalog Number: 12-5935

Clone: B1.23.2

Concentration: 5 μ L (0.25 μ g)/test

Host/Isotype: Mouse IgG2b, kappa



Formulation: aqueous buffer, 0.09% sodium azide, may contain carrier protein/stabilizer

Temperature Limitation: Store at 2-8°C. Do not freeze. Light-sensitive material.



Batch Code: Refer to vial



Use By: Refer to vial

Description

This B1.23.2 monoclonal antibody recognizes the human Human Leukocyte Antigens (HLA) B and C. Along with HLA-A, these proteins correspond to MHC Class I in humans. HLA-B and HLA-C are expressed on nearly all cell types and heterodimerize with beta-2 microglobulin at the cell surface. These molecular complexes play a critical role in the presentation of endoplasmic reticulum-derived peptides to immune cells.

Applications Reported

This B1.23.2 antibody has been reported for use in flow cytometric analysis.

Applications Tested

This B1.23.2 antibody has been pre-titrated and tested by flow cytometric analysis of normal human peripheral blood cells. This can be used at 5 μ L (0.25 μ g) per test. A test is defined as the amount (μ g) of antibody that will stain a cell sample in a final volume of 100 μ L. Cell number should be determined empirically but can range from 10^5 to 10^8 cells/test.

References

Desfrançois J, Moreau-Aubry A, Vignard V, Godet Y, Khammari A, Dréno B, Jotereau F, Gervois N. Double positive CD4CD8 alphabeta T cells: a new tumor-reactive population in human melanomas. PLoS One. 2010 Jan 5;5(1):e8437. (**B1.23.2**, FC)

Srivastava R, Ducean BW, Biro PA, Sood AK, Weissman SM. Molecular organization of the class I genes of human major histocompatibility complex. Immunol Rev. 1985 Jul;84:93-121. Review.

Rebaï N, Malissen B. Structural and genetic analyses of HLA class I molecules using monoclonal xenoantibodies. Tissue Antigens. 1983 Aug;22(2):107-17. (**B1.23.2**)

Related Products

11-0039 Anti-Human CD3 FITC (HIT3a)

Not for further distribution without written consent.

Copyright © 2000-2012 eBioscience, Inc.

Tel: 888.999.1371 or 858.642.2058 • Fax: 858.642.2046 • www.ebioscience.com •
info@ebioscience.com

Anti-Human HLA-BC PE

Catalog Number: 12-5935

Also known as: Human Leukocyte Antigen B and C

RUO: For Research Use Only. Not for use in diagnostic procedures.

12-4732 Mouse IgG2b K Isotype Control PE

Not for further distribution without written consent.

Copyright © 2000-2012 eBioscience, Inc.

Tel: 888.999.1371 or 858.642.2058 • Fax: 858.642.2046 • www.ebioscience.com •
info@ebioscience.com