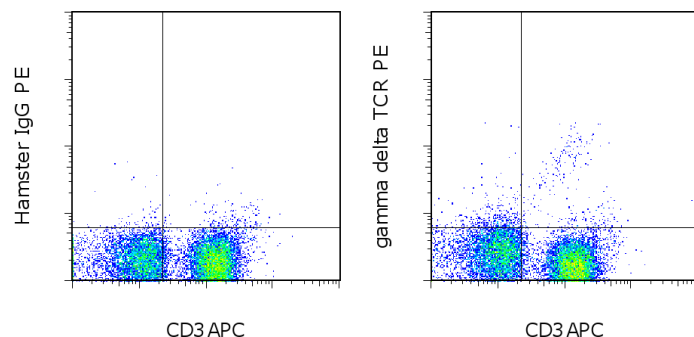


Anti-Mouse gamma delta TCR PE

Catalog Number: 12-5711

RUO: For Research Use Only. Not for use in diagnostic procedures.



Staining of C57BL/6 lymph node cells (preblocked with Anti-Mouse CD16/32 Purified (cat. 14-0161)) with Anti-Mouse CD3e APC (cat. 17-0031) and 0.25 ug of Armenian Hamster IgG Isotype Control PE (cat. 12-4888) (left) or 0.25 ug of Anti-Mouse gamma delta TCR PE (right). Cells in the lymphocyte gate were used for analysis.

Product Information

Contents: Anti-Mouse gamma delta TCR PE
Catalog Number: 12-5711
Clone: eBioGL3 (GL-3, GL3)
Concentration: 0.2 mg/mL
Host/Isotype: Armenian Hamster IgG

Formulation: aqueous buffer, 0.09% sodium azide, may contain carrier protein/stabilizer
Temperature Limitation: Store at 2-8°C. Do not freeze. Light sensitive material.
Batch Code: Refer to vial
Use By: Refer to vial
Caution, contains Azide

Description

The GL3 monoclonal antibody reacts with the gamma delta T-cell Receptor complex (TCR) on all gamma delta TCR bearing T cells, but it does not react with alpha beta TCR. The gamma delta TCR is present on cells in the thymus, epidermis, epithelial lining of the intestine, peritoneal cavity, and lymphoid tissues.

Applications Reported

This GL3 (GL-3) antibody has been reported for use in flow cytometric analysis.

It is recommended to prestain cells with anti-mouse CD16/32 (cat. 14-0161) to prevent non-specific Fc-mediated binding of the GL3 monoclonal antibody.

Applications Tested

This GL3 (GL-3) antibody has been tested by flow cytometric analysis of mouse lymph node cells. This can be used at less than or equal to 0.5 µg per test. A test is defined as the amount (µg) of antibody that will stain a cell sample in a final volume of 100 µL. Cell number should be determined empirically but can range from 10⁵ to 10⁸ cells/test. It is recommended that the antibody be carefully titrated for optimal performance in the assay of interest.

References

Maloy KJ, Mowat AM, Zamoyska R, Crispe IN. Phenotypic heterogeneity of intraepithelial T lymphocytes from mouse small intestine. *Immunology*. 1991 Apr;72(4):555-62.

LeFrançois, L. Phenotypic complexity of intraepithelial lymphocytes of the small intestine. *J Immunol*. 1991 Sep 15;147(6):1746-51.

Allison JP, Raulet DH. The immunobiology of gamma delta+ T cells. *Semin Immunol*. 1990 Jan;2(1):59-65.

Related Products

11-5961 Anti-Mouse TCR beta FITC (H57-597)
12-4888 Armenian Hamster IgG Isotype Control PE (eBio299Arm)

Not for further distribution without written consent.

Copyright © 2000-2012 eBioscience, Inc.

Tel: 888.999.1371 or 858.642.2058 • Fax: 858.642.2046 • www.ebioscience.com • info@ebioscience.com

Anti-Mouse gamma delta TCR PE

Catalog Number: 12-5711

RUO: For Research Use Only. Not for use in diagnostic procedures.

14-0161 Anti-Mouse CD16/CD32 Purified (93)

17-0031 Anti-Mouse CD3e APC (145-2C11)

Not for further distribution without written consent.

Copyright © 2000-2012 eBioscience, Inc.

Tel: 888.999.1371 or 858.642.2058 • Fax: 858.642.2046 • www.ebioscience.com •
info@ebioscience.com