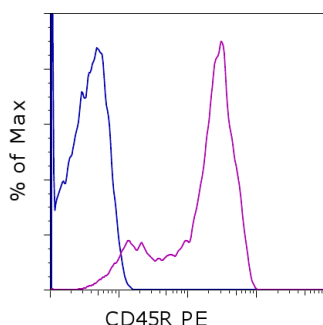


## Anti-Canine CD45R PE

Catalog Number: 12-5451

RUO: For Research Use Only. Not for use in diagnostic procedures.

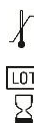


Staining of normal canine peripheral blood cells with Rat IgG2a kappa Isotype Control PE (cat. 12-4031) (blue histogram) or Anti-Canine CD45R PE (purple histogram). Cells in the lymphocyte gate were used for analysis.

### Product Information

**Contents:** Anti-Canine CD45R PE  
**Catalog Number:** 12-5451  
**Clone:** YKIX753.22  
**Concentration:** 5  $\mu$ L (0.0075  $\mu$ g)/test  
**Host/Isotype:** Rat IgG2b, kappa

**Formulation:** aqueous buffer, 0.09% sodium azide, may contain carrier protein/stabilizer  
**Temperature Limitation:** Store at 2-8°C. Do not freeze. Light sensitive material.  
**Batch Code:** Refer to vial  
**Use By:** Refer to vial



### Description

The YKIX753.22 monoclonal antibody reacts with canine CD45R. In dogs, CD45R is expressed on B cells and peripheral T cells. In addition, CD45 exists as multiple isoforms due to alternative splicing. Some isoforms of CD45 are CD45RA, CD45RB, or CD45RO depending on the exon used during transcription. The C-terminal domain of CD45 exhibits tyrosine phosphatase activity that enables signaling from by T cell and B cell receptors following activation.

This antibody has been reported to promote cell depletion via antibody-dependent cell-mediated cytotoxicity when used in conjunction with YKIX716.13.

### Applications Reported

This YKIX753.22 antibody has been reported for use in flow cytometric analysis.

### Applications Tested

This YKIX753.22 antibody has been pre-titrated and tested by flow cytometric analysis of normal canine peripheral blood cells. This can be used at 5  $\mu$ L (0.0075  $\mu$ g) per test. A test is defined as the amount ( $\mu$ g) of antibody that will stain a cell sample in a final volume of 100  $\mu$ L. Cell number should be determined empirically but can range from  $10^5$  to  $10^8$  cells/test.

### References

Cobbold S, Metcalfe S. Monoclonal antibodies that define canine homologues of human CD antigens: summary of the First International Canine Leukocyte Antigen Workshop (CLAW). Tissue Antigens. 1994 Mar;43(3):137-54. (YKIX753.22, FC)

### Related Products

12-4031 Rat IgG2b K Isotype Control PE

Not for further distribution without written consent.

Copyright © 2000-2012 eBioscience, Inc.

Tel: 888.999.1371 or 858.642.2058 • Fax: 858.642.2046 • [www.ebioscience.com](http://www.ebioscience.com) •  
[info@ebioscience.com](mailto:info@ebioscience.com)