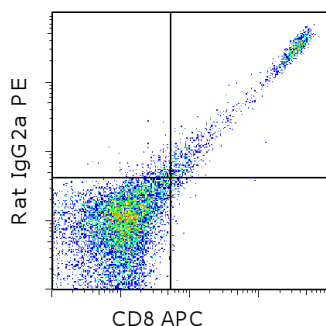


Anti-Rat IgG2a PE

Catalog Number: 12-4817

RUO: For Research Use Only. Not for use in diagnostic procedures.



Staining of C57Bl/6 splenocytes with Anti-Mouse CD8a APC (clone 53-6.7, a rat IgG2a isotype)(cat. 17-0081) and subsequently stained 0.03 ug of Anti-Rat IgG2a PE (right). Total viable cells were used for analysis.

Product Information



Contents: Anti-Rat IgG2a PE

Catalog Number: 12-4817

Clone: r2a-21B2

Concentration: 0.2 mg/mL

Host/Isotype: Mouse IgG1, kappa



Formulation: aqueous buffer, 0.09% sodium azide, may contain carrier protein/stabilizer

Temperature Limitation: Store at 2-8°C. Do not freeze. Light-sensitive material.

Batch Code: Refer to vial

Use By: Refer to vial

Description

The monoclonal antibody r2a-21B2 recognizes Rat IgG2a antibodies and can be used as a second step reagent in flow cytometry and microscopy. The monoclonal does not recognize other rat isotypes nor does it crossreact to mouse IgG2a or any mouse isotype antibodies.

Applications Reported

This R2a-21B2 antibody has been reported for use in flow cytometric analysis.

Applications Tested

This R2a-21B2 antibody has been tested by flow cytometric analysis of cells stained with rat IgG2a primary antibody. This can be used at less than or equal to 0.06 µg per test. A test is defined as the amount (µg) of antibody that will stain a cell sample in a final volume of 100 µL. Cell number should be determined empirically but can range from 10⁵ to 10⁸ cells/test. It is recommended that the antibody be carefully titrated for optimal performance in the assay of interest.

Related Products

17-0081 Anti-Mouse CD8a APC (53-6.7)

Not for further distribution without written consent.

Copyright © 2000-2012 eBioscience, Inc.

Tel: 888.999.1371 or 858.642.2058 • Fax: 858.642.2046 • www.ebioscience.com •
info@ebioscience.com