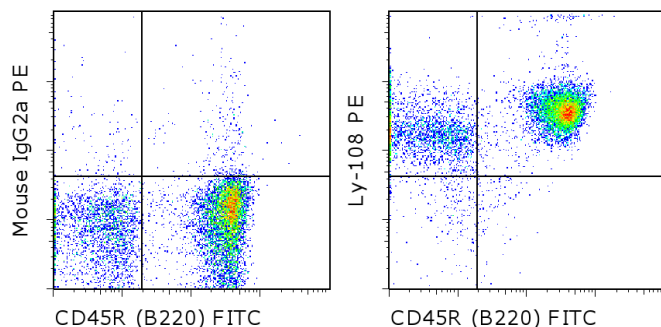


Anti-Mouse Ly-108 PE

Catalog Number: 12-1508

Also known as: SLAM Family Receptor, SLAMF6, SLAM F6, Ly108

RUO: For Research Use Only. Not for use in diagnostic procedures.



Staining of C57Bl/6 splenocytes with Anti-Human/Mouse CD45R (B220) FITC (cat. 11-0452) and 0.06 ug of Mouse IgG2a K Isotype Control PE (cat. 12-4724) (left) or 0.06 ug of Anti-Mouse Ly-108 PE (right). Cells in the lymphocyte gate were used for analysis.

Product Information



Contents: Anti-Mouse Ly-108 PE

Catalog Number: 12-1508

Clone: eBio13G3-19D (13G3-19D)

Concentration: 0.2 mg/mL

Host/Isotype: Mouse IgG2a, kappa



Formulation: aqueous buffer, 0.09% sodium azide, may contain carrier protein/stabilizer

Temperature Limitation: Store at 2-8°C. Do not freeze. Light sensitive material.

Batch Code: Refer to vial

Use By: Refer to vial

Caution, contains Azide

Description

The eBio13G3-19D monoclonal antibody reacts with mouse Ly108, the mouse homologue of human SLAMF6 (signaling lymphocyte activation molecule family member 6). Mouse Ly108 is also known as NTB-A (NK cell, T cell, B cell antigen), and is expressed on NK, T cells, and B cells. Engagement of the Ly108 receptor enhances NK cell activity and expression of IFN-gamma, and contributes to the inability of NK cells to kill Epstein Barr virus-infected B cells in X-linked lymphoproliferative disease. CD4+ T cells from Ly108 knock-out mice exhibit diminished ability to produce IL-4 and defective neutrophil functions.

Staining has not revealed any strain differences between C57BL/6 and BALB/c mice. Other strains have not been tested.

Applications Reported

This eBio13G3-19D (13G3-19D) antibody has been reported for use in flow cytometric analysis.

Applications Tested

This eBio13G3-19D (13G3-19D) antibody has been tested by flow cytometric analysis of mouse splenocytes and thymocytes. This can be used at less than or equal to 0.125 µg per test. A test is defined as the amount (µg) of antibody that will stain a cell sample in a final volume of 100 µL. Cell number should be determined empirically but can range from 10⁵ to 10⁸ cells/test. It is recommended that the antibody be carefully titrated for optimal performance in the assay of interest.

References

Peck SR, Ruley HE. Ly108: a new member of the mouse CD2 family of cell surface proteins. *Immunogenetics*. 2000 Nov;52(1-2):63-72.

Fraser CC, Howie D, Morra M, Qiu Y, Murphy C, Shen Q, Gutierrez-Ramos JC, Coyle A, Kingsbury GA, Terhorst C. Identification and characterization of SF2000 and SF2001, two new members of the immune receptor SLAM/CD2 family. *Immunogenetics*. 2002 Feb;53(10-11):843-50.

Not for further distribution without written consent.

Copyright © 2000-2012 eBioscience, Inc.

Tel: 888.999.1371 or 858.642.2058 • Fax: 858.642.2046 • www.ebioscience.com • info@ebioscience.com

Anti-Mouse Ly-108 PE

Catalog Number: 12-1508

Also known as: SLAM Family Receptor, SLAMF6, SLAM F6, Ly108

RUO: For Research Use Only. Not for use in diagnostic procedures.

Howie D, Laroux FS, Morra M, Satoskar AR, Rosas LE, Faubion WA, Julien A, Rietdijk S, Coyle AJ, Fraser C, Terhorst C. Cutting edge: the SLAM family receptor Ly108 controls T cell and neutrophil functions. J Immunol. 2005 May 15;174(10):5931-5.

Related Products

12-4724 Mouse IgG2a K Isotype Control PE

17-0452 Anti-Human/Mouse CD45R (B220) APC (RA3-6B2)