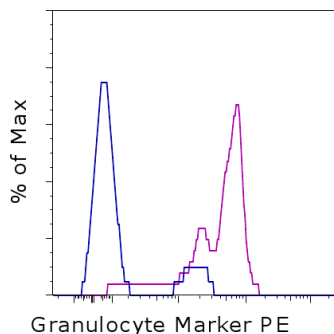


Anti-Rat Granulocyte Marker PE

Catalog Number: 12-0570

RUO: For Research Use Only. Not for use in diagnostic procedures.



Staining of rat splenocytes with 0.125 ug of Mouse IgM Isotype Control PE (cat. 12-4752) (blue histogram) or 0.125 ug of Anti-Rat Granulocyte Marker PE (purple histogram). Cells in the large scatter population were used for analysis.

Product Information



Contents: Anti-Rat Granulocyte Marker PE

Catalog Number: 12-0570

Clone: HIS48

Concentration: 0.2 mg/mL

Host/Isotype: Mouse IgM



Formulation: aqueous buffer, 0.09% sodium azide, may contain carrier protein/stabilizer

Temperature Limitation: Store at 2-8°C. Do not freeze. Light-sensitive material.

Batch Code: Refer to vial



Use By: Refer to vial

Description

The HIS48 monoclonal antibody reacts with a molecule expressed on the surface of all rat granulocytes. The antigen recognized by HIS48 is also expressed by erythroid lineage cells during their developmental stages in the bone marrow. HIS48 is commonly used as a phenotypic marker for rat granulocytes.

Applications Reported

This HIS48 antibody has been reported for use in flow cytometric analysis.

Applications Tested

This HIS48 antibody has been tested by flow cytometric analysis of rat splenocytes or bone marrow. This can be used at less than or equal to 0.25 µg per test. A test is defined as the amount (µg) of antibody that will stain a cell sample in a final volume of 100 µL. Cell number should be determined empirically but can range from 10⁵ to 10⁸ cells/test. It is recommended that the antibody be carefully titrated for optimal performance in the assay of interest.

References

Rhodes, N. P., J. A. Hunt, et al. 1997. Macrophage subpopulation differentiation by stimulation with biomaterials. *J Biomed Mater Res* 37(4): 481-8.

Badger, D. A., J. M. Sauer, et al. 1996. The role of inflammatory cells and cytochrome P450 in the potentiation of CCl₄-induced liver injury by a single dose of retinol. *Toxicol Appl Pharmacol* 141(2): 507-19.

Clark, W. M., J. D. Lauten, et al. 1995. Time course of ICAM-1 expression and leukocyte subset infiltration in rat forebrain ischemia. *Mol Chem Neuropathol* 26(3): 213-30.

Van Goor, H., et al. 1991. Determinants of focal and segmental glomerulosclerosis in the rat after renal ablation. Evidence for involvement of macrophages and lipids. *Lab. Invest.* 64: 754-765.

Related Products

12-4752 Mouse IgM Isotype Control PE

Not for further distribution without written consent.

Copyright © 2000-2012 eBioscience, Inc.

Tel: 888.999.1371 or 858.642.2058 • Fax: 858.642.2046 • www.ebioscience.com •
info@ebioscience.com

Anti-Rat Granulocyte Marker PE

Catalog Number: 12-0570

RUO: For Research Use Only. Not for use in diagnostic procedures.

Not for further distribution without written consent.

Copyright © 2000-2012 eBioscience, Inc.

Tel: 888.999.1371 or 858.642.2058 • Fax: 858.642.2046 • www.ebioscience.com •
info@ebioscience.com