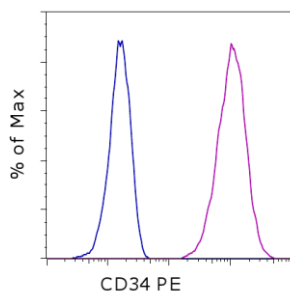


Anti-Canine CD34 PE

Catalog Number: 12-0340

RUO: For Research Use Only. Not for use in diagnostic procedures.



Staining of a canine CD34-expressing cell line with Mouse IgG1 kappa Isotype Control PE (cat. 12-4714) (blue histogram) or Anti-Canine CD34 PE (purple histogram). Total viable cells were used for analysis.

Product Information



Contents: Anti-Canine CD34 PE

Catalog Number: 12-0340

Clone: 1H6

Concentration: 5 μ L (0.25 μ g)/test

Host/Isotype: Mouse IgG1



Formulation: aqueous buffer, 0.09% sodium azide, may contain carrier protein/stabilizer

Temperature Limitation: Store at 2-8°C. Do not freeze. Light-sensitive material.

Batch Code: Refer to vial



Use By: Refer to vial

Description

The 1H6 monoclonal antibody reacts with canine CD34, also known as mucosialin. CD34 belongs to a protein family that also includes endoglycan and podocalyxin. These single-pass transmembrane proteins possess heavily glycosylated extracellular and N-terminal mucin domains. Similar to humans, canine CD34 can be detected on hematopoietic progenitor cells in the bone marrow, peripheral blood and hair follicle, as well as on some populations of mesenchymal stem cells, tumor cell lines, and on vascular endothelia in the adult. CD34 can be used as a marker to isolate cells capable of hematopoietic cell engraftment.

The 1H6 antibody has been reported to work for enriching CD34+ cells.

Applications Reported

This 1H6 antibody has been reported for use in flow cytometric analysis.

Applications Tested

This 1H6 antibody has been pre-titrated and tested by flow cytometric analysis of a canine CD34-expressing cell line. This can be used at 5 μ L (0.25 μ g) per test. A test is defined as the amount (μ g) of antibody that will stain a cell sample in a final volume of 100 μ L. Cell number should be determined empirically but can range from 10^5 to 10^8 cells/test.

References

Pascucci L, Mercati F, Gargiulo AM, Pedini V, Sorbolini S, Ceccarelli P. CD34 glycoprotein identifies putative stem cells located in the isthmus region of canine hair follicles. *Vet Dermatol*. 2006 Aug;17(4):244-51.

Suter SE, Gouthro TA, McSweeney PA, Nash RA, Haskins ME, Felsburg PJ, Henthorn PS. Isolation and characterization of pediatric canine bone marrow CD34+ cells. *Vet Immunol Immunopathol*. 2004 Sep;101(1-2):31-47. (1H6, CD34+ enrichment)

McSweeney PA, Rouleau KA, Wallace PM, Bruno B, Andrews RG, Krizanac-Bengez L, Sandmaier BM, Storb R, Wayne E, Nash RA. Characterization of monoclonal antibodies that recognize canine CD34. *Blood*. 1998 Mar

Not for further distribution without written consent.

Copyright © 2000-2012 eBioscience, Inc.

Tel: 888.999.1371 or 858.642.2058 • Fax: 858.642.2046 • www.ebioscience.com •
info@ebioscience.com

Anti-Canine CD34 PE

Catalog Number: 12-0340

RUO: For Research Use Only. Not for use in diagnostic procedures.

15;91(6):1977-86. (1H6, FC and WB)

Related Products

12-4714 Mouse IgG1 K Isotype Control PE (P3.6.2.8.1)

Not for further distribution without written consent.

Copyright © 2000-2012 eBioscience, Inc.

Tel: 888.999.1371 or 858.642.2058 • Fax: 858.642.2046 • www.ebioscience.com •
info@ebioscience.com