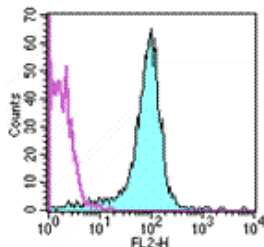


Anti-Mouse CD31 (PECAM-1) PE

Catalog Number: 12-0311

Also Known As: Platelet-Endothelial Cell Adhesion Molecule 1

RUO: For Research Use Only. Not for use in diagnostic procedures.



Staining of BALB/c splenocytes with staining buffer (autofluorescence) (open histogram) or 0.25 µg of Anti-Mouse CD31 (PECAM-1) PE (filled histogram). Total viable cells were used for analysis.

Product Information

Contents: Anti-Mouse CD31 (PECAM-1) PE

 **Catalog Number:** 12-0311

Clone: 390

Concentration: 0.2 mg/mL

Host/Isotype: Rat IgG2a, kappa

Formulation: aqueous buffer, 0.09% sodium azide, may contain carrier protein/stabilizer



Temperature Limitation: Store at 2-8°C. Do not freeze. Light sensitive material.



Batch Code: Refer to Vial



Use By: Refer to Vial



Caution, contains Azide

Description

The 390 monoclonal antibody reacts with mouse CD31, also known as platelet-endothelial cell adhesion molecule-1 (PECAM-1) and gpIIa. This 130-140 kDa surface protein is expressed by endothelial cells and at low levels on all leukocytes and platelets. It has been reported that CD38 binds to CD31. Homotypic interaction of CD31 is important in adhesion, cell-cell and cell-matrix interaction, and signal transduction.

Applications Reported

The 390 antibody has been reported for use in flow cytometric analysis.

Applications Tested

The 390 antibody has been tested by flow cytometric analysis of mouse thymocyte and splenocyte suspensions. This can be used at less than or equal to 0.5 µg per test. A test is defined as the amount (µg) of antibody that will stain a cell sample in a final volume of 100 µL. Cell number should be determined empirically but can range from 10⁵ to 10⁸ cells/test. It is recommended that the antibody be carefully titrated for optimal performance in the assay of interest.

References

Sadri N, Schneider RJ. Auf1/Hnmpd-Deficient Mice Develop Pruritic Inflammatory Skin Disease. *J Invest Dermatol*. 2009 Mar;129(3):657-70. (390, IHC frozen, PubMed)

Cao G, O'Brien CD, Zhou Z, Sanders SM, Greenbaum JN, Makrigiannakis A, DeLisser HM. Involvement of human PECAM-1 in angiogenesis and in vitro endothelial cell migration. *Am J Physiol Cell Physiol*. 2002 May;282(5):C1181-90. (390, IHC frozen)

Wiewrodt R, Anu P, Thomas, Luca Cipelletti, Melpo Christofidou-Solomidou, David A. Weitz, Sheldon I. Feinstein, David Schaffer, Steven M. Albelda, Michael Koval, and Vladimir R. Muzykantov. Size-dependent intracellular immunotargeting of therapeutic cargoes into endothelial cells. *Blood*. 2002 Feb 1;99(3):912-22.

Horenstein AL, Stockinger H, Imhof BA, Malavasi F. CD38 binding to human myeloid cells is mediated by mouse and human CD31. *Biochem J*. 1998 Mar 15;330 (Pt 3):1129-35.

Baldwin HS, Shen HM, Yan HC, DeLisser HM, Chung A, Mickanin C, Trask T, Kirschbaum NE, Newman PJ, Albelda SM, et al. Platelet endothelial cell adhesion molecule-1 (PECAM-1/CD31): alternatively spliced, functionally distinct isoforms expressed during mammalian cardiovascular development. *Development*. 1994 Sep;120(9):2539-53.

Related Products

12-4321 Rat IgG2a K Isotype Control PE (eBR2a)

Not for further distribution without written consent.

Copyright © 2000-2010 eBioscience, Inc.

Tel: 888.999.1371 or 858.642.2058 • Fax: 858.642.2046 • www.eBioscience.com • info@eBioscience.com