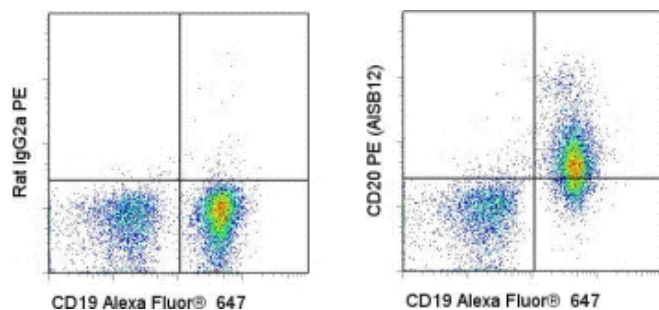


Anti-Mouse CD20 PE

Catalog Number: 12-0201

Also Known As: B1, Ms4a2, Ly-44

RUO: For Research Use Only. Not for use in diagnostic procedures.



Staining of BALB/c splenocytes with Anti-Mouse CD19 Alexa Fluor® 647 and 0.125 ug of Rat IgG2a kappa Isotype Control PE (cat. 12-4321) (left) or 0.125 ug of Anti-Mouse CD20 PE (right). Cells in the lymphocyte gate were used for analysis.

Product Information

Contents: Anti-Mouse CD20 PE


 Catalog Number: 12-0201

Clone: AISB12


Concentration: 0.2 mg/mL

Host/Isotype: Rat IgG2a

Formulation: aqueous buffer, 0.09% sodium azide, may contain carrier protein/stabilizer

 Temperature Limitation: Store at 2-8°C. Do not freeze. Light sensitive material.

 Batch Code: Refer to Vial

 Use By: Refer to Vial

 Caution, contains Azide

Description

The AISB12 monoclonal antibody reacts with mouse CD20. CD20 is a B cell-specific 32kDa membrane protein involved in intracellular calcium regulation. CD20 expression begins after the induction of CD19 during development, and is coexpressed with IgM during the pre-B to immature B cell transition in bone marrow. Expression then increases during maturation with almost all mature cells expressing some level of CD20. The human CD20 antigen has proven to be an effective immunotherapeutic target in B cell lymphoma and several autoimmune diseases including rheumatoid arthritis and type I diabetes. CD20 consists of 4 transmembrane domains and a 44 amino acid extracellular loop domain where AISB12 binds.

Applications Reported

This AISB12 antibody has been reported for use in flow cytometric analysis.

Applications Tested

This AISB12 antibody has been tested by flow cytometric analysis of mouse splenocytes. This can be used at less than or equal to 0.25 µg per test. A test is defined as the amount (µg) of antibody that will stain a cell sample in a final volume of 100 µL. Cell number should be determined empirically but can range from 10⁵ to 10⁸ cells/test. It is recommended that the antibody be carefully titrated for optimal performance in the assay of interest.

References

Qian J, Zheng Y, Zheng C, Wang L, Qin H, Hong S, Li H, Lu Y, He J, Yang J, Neelapu S, Kwak LW, Hou J, Yi Q. Active vaccination with Dickkopf-1 induces protective and therapeutic antitumor immunity in murine multiple myeloma. *Blood*. 2012 Jan 5;119(1):161-9. AISB12, FA, PubMed)

Uchida J, Hamaguchi Y, Oliver JA, Ravetch JV, Poe JC, Haas KM, Tedder TF. The innate mononuclear phagocyte network depletes B lymphocytes through Fc receptor-dependent mechanisms during anti-CD20 antibody immunotherapy. *J Exp Med*. 2004 Jun 21;199(12):1659-69.

Uchida J, Lee Y, Hasegawa M, Liang Y, Bradney A, Oliver JA, Bowen K, Steeber DA, Haas KM, Poe JC, Tedder TF. Mouse CD20 expression and function. *Int Immunol*. 2004 Jan;16(1):119-29.

Tedder TF, Klejman G, Distech CM, Adler DA, Schlossman SF, Saito H. Cloning of a complementary DNA encoding a new mouse B lymphocyte differentiation antigen, homologous to the human B1 (CD20) antigen, and localization of the gene to chromosome 19. *J Immunol*. 1988 Dec 15;141(12):4388-94.

Related Products

12-0209 Anti-Human CD20 PE (2H7)
12-4321 Rat IgG2a K Isotype Control PE (eBR2a)

Not for further distribution without written consent.

Copyright © 2000-2010 eBioscience, Inc.

Tel: 888.999.1371 or 858.642.2058 • Fax: 858.642.2046 • www.eBioscience.com • info@eBioscience.com