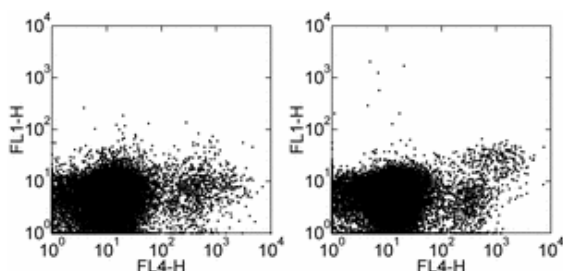


## Anti-Human/Mouse CD282 (TLR2) Alexa Fluor® 488

Catalog Number: 53-9024

Also Known As: TLR-2, toll-like receptor 2

RUO: For Research Use Only



Staining of C57BL/6 splenocytes with Anti-Mouse CD11b APC (cat. 17-0112) and 0.5 µg of Mouse IgG1 κ Isotype Control FITC (cat. 11-4714) (left) or 0.25 µg of Anti-Human/Mouse CD282 (TLR2) Alexa Fluor® 488 (right). Total viable cells were used for analysis.

### Product Information

Contents: Anti-Human/Mouse CD282 (TLR2) Alexa Fluor® 488


**REF** Catalog Number: 53-9024

Clone: T2.5

Concentration: 0.5 mg/ml


Host/Isotype: Mouse IgG1

Formulation: aqueous buffer, 0.09% sodium azide, may contain carrier protein/stabilizer

 Temperature Limitation: Store at 2-8°C. Do not freeze. Light sensitive material.

**LOT** Batch Code: Refer to Vial

 Use By: Refer to Vial

 Caution, contains Azide

### Description

The T2.5 monoclonal antibody reacts with mouse and human Toll-like receptor 2 (TLR2). Mouse TLR2 is expressed by the myeloid lineage, including macrophage and dendritic cells in splenocytes and the RAW264.7 cell line. To date, at least twelve members of the Toll family have been identified in human and mouse. This family of type I transmembrane proteins is characterized by an extracellular domain with leucine-rich repeats and a cytoplasmic domain with homology to the type I IL-1 receptor. Two of these receptors, TLR2 and TLR4, are pattern recognition receptors and signaling molecules in response to bacterial lipoproteins and have been implicated in innate immunity and inflammation. TLR2 is expressed on the surface of cells and is responsible for distinguishing different pathogens. T2.5 is an antagonistic antibody.

### Applications Reported

This T2.5 antibody has been reported for use in flow cytometric analysis.

### Applications Tested

This T2.5 antibody has been tested by flow cytometric analysis of mouse splenocytes. This can be used at less than or equal to 1 µg per test. A test is defined as the amount (µg) of antibody that will stain a cell sample in a final volume of 100 µL. Cell number should be determined empirically but can range from 10<sup>5</sup> to 10<sup>8</sup> cells/test. It is recommended that the antibody be carefully titrated for optimal performance in the assay of interest.

### References

Meng G, Rutz M, Schiemann M, Metzger J, Grabiec A, Schwandner R, Lippa PB, Ebel F, Busch DH, Bauer S, Wagner H, Kirschning CJ. 2004. Antagonistic antibody prevents toll-like receptor 2-driven lethal shock-like syndromes. *J Clin Invest.* 2004. 113:1473-81.

Sutmoller RP, den Brok MH, Kramer M, Bennink EJ, Toonen LW, Kullberg BJ, Joosten LA, Akira S, Netea MG, Adema GJ. Toll-like receptor 2 controls expansion and function of regulatory T cells. *J Clin Invest.* 2006 Feb;116(2):485-94 (T2.5, FC, PubMed)

Zhang C, Wang SH, Lasbury ME, Tschang D, Liao CP, Durant PJ, Lee CH. Toll-like receptor 2 mediates alveolar macrophage response to *Pneumocystis murina*. *Infect Immun.* 2006 Mar;74(3):1857-64 (T2.5, FA, PubMed).

Leemans JC, Stokman G, et al. 2005. Renal-associated TLR2 mediates ischemia/reperfusion injury in the kidney. *J Clin Invest.* 2005 Oct;115(10):2894-903. (IHC frozen and IP, PubMed)

### Related Products

11-9021 Anti-Mouse CD282 (TLR2) FITC (6C2)

11-9022 Anti-Mouse CD282 (TLR2) FITC (mT2.7)

11-9922 Anti-Human CD282 (TLR2) FITC (TL2.1)  
12-9021 Anti-Mouse CD282 (TLR2) PE (6C2)  
12-9022 Anti-Mouse CD282 (TLR2) PE (mT2.7)  
12-9922 Anti-Human CD282 (TLR2) PE (TL2.1)  
13-9021 Anti-Mouse CD282 (TLR2) Biotin (6C2)  
13-9022 Anti-Mouse CD282 (TLR2) Biotin (mT2.7)  
13-9922 Anti-Human CD282 (TLR2) Biotin (TL2.1)  
14-8185 B18R Recombinant Protein  
14-9021 Anti-Mouse CD282 (TLR2) Purified (6C2)  
14-9022 Anti-Mouse CD282 (TLR2) Purified (mT2.7)  
14-9029 Anti-Human CD282 (TLR2) Purified (TL2.3)  
14-9922 Anti-Human CD282 (TLR2) Purified (TL2.1)  
16-9021 Anti-Mouse CD282 (TLR2) Functional Grade Purified (6C2)  
16-9922 Anti-Human CD282 (TLR2) Functional Grade Purified (TL2.1)  
17-9021 Anti-Mouse CD282 (TLR2) APC (6C2)  
17-9922 Anti-Human CD282 (TLR2) APC (TL2.1)  
34-8185 B18R Recombinant Protein Carrier-Free  
51-9922 Anti-Human CD282 (TLR2) Alexa Fluor® 647 (To Be Discontinued. Refer to Alternative Format: APC, cat. 17-9922) (TL2.1)  
53-4714 Mouse IgG1 K Isotype Control Alexa Fluor® 488  
53-9922 Anti-Human CD282 (TLR2) Alexa Fluor® 488 (TL2.1)  
56-9922 Anti-Human CD282 (TLR2) Alexa Fluor® 700 (TL2.1)

#### Legal

Alexa Fluor® and Pacific Blue® are registered trademarks of and licensed under patents assigned to Molecular Probes, Inc. for research use only. This product is subject to an agreement between Molecular Probes, Inc. and eBioscience, and the manufacture, use, sale or import of this product may be subject to one or more U.S. patents, pending applications and corresponding foreign equivalents, owned by Molecular Probes, Inc. (a wholly owned subsidiary of Invitrogen Corp). The purchase of this product conveys to the buyer the non-transferable right to use the purchased amount of the product for life science research or as an ASR. The buyer cannot use this product for manufacturing or for any other screening (specifically including use in combination with microarrays or High Content Screening) or testing purpose, other than as an ASR. For information on purchasing a license to this product for purposes other than life science research or use as an ASR, contact Molecular Probes, Inc.

---

Not for further distribution without written consent.

Copyright © 2000-2010 eBioscience, Inc.

Tel: 888.999.1371 or 858.642.2058 • Fax: 858.642.2046 • [www.eBioscience.com](http://www.eBioscience.com) • [info@eBioscience.com](mailto:info@eBioscience.com)