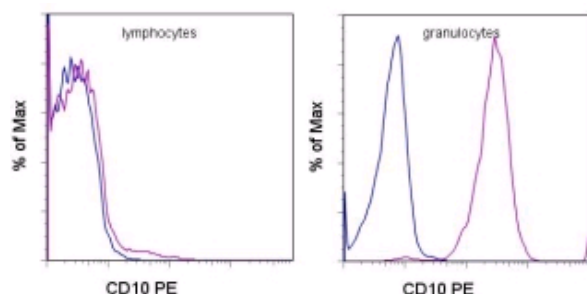


## Anti-Human CD10 PE

Catalog Number: 12-0108

Also Known As: Common Acute Lymphocytic Leukemia antigen (CALLA), Neprilysin,  
RUO: For Research Use Only



Staining of normal human peripheral blood cells with Mouse IgG1 κ Isotype Control PE (cat. 12-4714) (blue histogram) or Anti-Human CD10 PE (purple histogram).

### Product Information

Contents: Anti-Human CD10 PE


**REF** Catalog Number: 12-0108

Clone: SN5c

Concentration: 5 µl (0.5 µg)/test


Host/Isotype: Mouse IgG1

Formulation: aqueous buffer, 0.09% sodium azide, may contain carrier protein/stabilizer

 Temperature Limitation: Store at 2-8°C. Do not freeze. Light sensitive material.

**LOT** Batch Code: Refer to Vial

 Use By: Refer to Vial

 Caution, contains Azide

### Description

The eBioSN5c monoclonal antibody recognizes human CD10 (CALLA, NEP, enkephalinase, Neprilysin), which is a 100 kDa, type II cell surface glycoprotein originally identified for its expression on most acute lymphoblastic leukemias (ALLs). Subsequently, CD10 was shown to be the same molecule as neutral endopeptidase (NEP), or KII-NA. CD10 is a Zn<sup>2+</sup>-dependent metallopeptidase acting on substrates such as endothelin, glucagon, gastrin, neurotensin and bradykinin. CD10 is involved in the regulation of chemotactic and inflammatory processes involving neutrophils. In B cells, CD10 regulates stromal cell-dependent B lymphopoiesis and its expression has been reported on mature germinal center B cells. CD10 expression is also found on normal donor granulocytes and bone marrow stromal cells. Most likely, CB-CALLA and eBioSN5c see different epitopes due to their ability to co-stain.

### Applications Reported

This eBioSN5c (SN5c L4-1A1) antibody has been reported for use in flow cytometric analysis.

### Applications Tested

This eBioSN5c (SN5c L4-1A1) antibody has been pre-titrated and tested by flow cytometric analysis of normal human peripheral blood cells. This can be used at 5 µl (0.5 µg)/per test. A test is defined as the amount (µg)/test of antibody that will stain a cell sample in a final volume of 100 µL. Cell number should be determined empirically but can range from 10<sup>5</sup> to 10<sup>8</sup> cells/test.

### References

Biddle WC, Haruta Y, Seon BK, Henderson ES, Sarcione EJ. In vitro and in vivo cytotoxic activity of anti-human leukemia monoclonal antibodies SN5c and SN6 daunorubicin conjugates. *Leuk Res.* 1989;13(8):699-707.

Matsuzaki H, Haruta Y, Fukukawa T, Barcos MP, Seon BK. Unique epitopes of common acute lymphoblastic leukemia antigen detected by new monoclonal antibodies. *Cancer Res.* 1987 Apr 15;47(8):2160-6. (PubMed)

### Related Products

12-0106 Anti-Human CD10 PE (eBioCB-CALLA (CB-CALLA))

12-4714 Mouse IgG1 K Isotype Control PE

