

# Product Data Sheet

## FITC anti-mouse CD8b

**Catalog # / Size:** 126605 / 50 µg  
126606 / 500 µg

**Clone:** YTS156.7.7

**Isotype:** Rat IgG2b, κ

**Immunogen:** mouse thymocytes

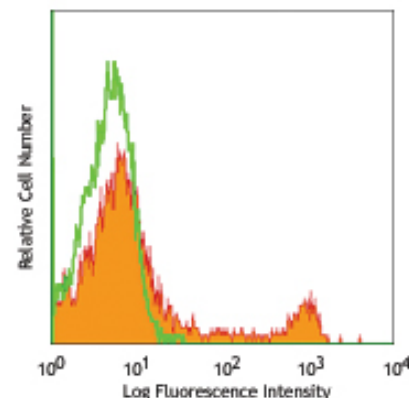
**Reactivity:** mouse CD8 beta chain

**Preparation:** The antibody was purified by affinity chromatography, and conjugated with FITC under optimal conditions. The solution is free of unconjugated FITC.

**Formulation:** Phosphate-buffered solution, pH 7.2, containing 0.09% sodium azide.

**Concentration:** 0.5 mg/ml

**Storage:** The antibody solution should be stored undiluted at 4°C. **Do not freeze.**



BALB/c mouse splenocytes stained with YTS156.7.7 FITC

## Applications:

**Applications:** FC - Quality tested

**Recommended Usage:** Each lot of this antibody is quality control tested by immunofluorescent staining with flow cytometric analysis. For immunofluorescent staining, the suggested use of this reagent is ≤ 0.25 µg per 10<sup>6</sup> cells in 100 µl volume. It is recommended that the reagent be titrated for optimal performance for each application.

**Application Notes:** Additional reported applications (for the relevant formats) include: immunohistochemistry of acetone-fixed frozen tissue sections.

**Application References:** 1. McNical AM, *et al.* 2007. *Eur. J. Immunol.* 37:1634.  
2. Nakagawa Y, *et al.* 2012. *Int Immunol.* PubMed.

**Description:** CD8b is the 32 kD β chain of CD8, also known as Lyt-3 or Ly-3. It is a member of the Ig superfamily expressed as a heterodimer with the CD8α chain on a subset of MHC class I-restricted T cells and most thymocytes. CD8 is a co-receptor for the TCR complex involved in T cell activation.

**Antigen References:** 1. Barclay A, *et al.* 1997. *The Leukocyte antigen Facts Book* Academic Press.  
2. Zamoyska R. 1994. *Immunity* 1:243-246.  
3. Ellmeier W, *et al.* 1999. *Annu. Rev Immunol* 17:523.  
4. Ledbetter JA, *et al.* 1981. *J. Exp. Med.* 153:1503.

### Related Products:

**Product**  
Cell Staining Buffer  
FITC Rat IgG2b, κ Isotype Ctrl  
TruStain fcX™ (anti-mouse CD16/32)

### Clone

RTK4530  
93

### Application

FC, ICC, ICFC  
FC, ICFC  
FC



For research use only. Not for diagnostic use. Not for resale. BioLegend will not be held responsible for patent infringement or other violations that may occur with the use of our products.



\*These products may be covered by one or more Limited Use Label Licenses (see the BioLegend Catalog or our website, [www.biollegend.com/ordering#license](http://www.biollegend.com/ordering#license)). BioLegend products may not be transferred to third parties, resold, modified for resale, or used to manufacture commercial products, reverse engineer functionally similar materials, or to provide a service to third parties without written approval of BioLegend. By use of these products you accept the terms and conditions of all applicable Limited Use Label Licenses. Unless otherwise indicated, these products are for research use only and are not intended for human or animal diagnostic, therapeutic or commercial use.