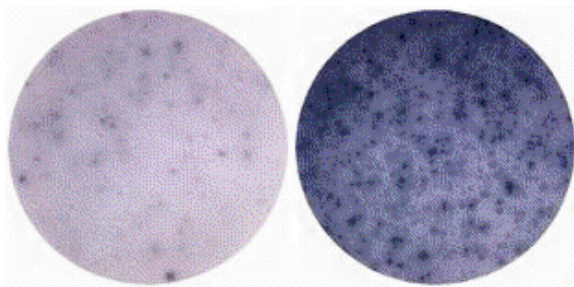


Anti-Mouse IL-6 Purified

Catalog Number: 14-7061

Also Known As: Interleukin-6

RUO: For Research Use Only. Not for use in diagnostic procedures.



Mouse splenocytes (500,000 cells/ well) were activated with LPS (1 ug/ml) for 48 hours in Mouse IL-6 ELISPOT assay. Control well is medium alone.

Product Information

Contents: Anti-Mouse IL-6 Purified

REF **Catalog Number:** 14-7061

Clone: MP5-20F3

Concentration: 0.5 mg/mL

Host/Isotype: Rat IgG1, kappa

Formulation: aqueous buffer, 0.09% sodium azide, may contain carrier protein/stabilizer



Temperature Limitation: Store at 2-8°C.



Batch Code: Refer to Vial



Use By: Refer to Vial



Contains sodium azide

Description

The MP5-20F3 antibody reacts with mouse interleukin-6 (IL-6). The MP5-20F3 antibody is a neutralizing antibody. Mouse IL-6 (also known as B Cell Stimulating Factor, BCSF, and BSF-2) is a 21-28 kDa factor produced by a variety of cell types, including monocytes, fibroblasts and endothelial cells. Upon stimulation, macrophages, T, B, mast, and glial cells, eosinophils, keratinocytes and granulocytes also secrete IL-6. This pleiotropic cytokine influences the antigen-specific immune response, inflammatory response, and the development of neurons, and is a major mediator of the acute phase reaction.

Applications Reported

This MP5-20F3 antibody has been reported for use in ELISA capture antibody and ELISPOT capture antibody.

Applications Tested

The MP5-20F3 antibody has been tested as the capture antibody in a sandwich ELISA for analysis of mouse Interleukin-6 (IL-6) in combination with the biotin MP5-32C11 (cat. 13-7062) antibody for detection and recombinant mouse IL-6 (cat. 14-8061) as the standard. A suitable range of concentrations of this antibody for ELISA capture is 0.5-2 µg/mL. A standard curve consisting of doubling dilutions of the recombinant standard over the range of 8-1000 pg/mL should be included in each ELISA plate.

References

Sander B, Höiden I, Andersson U, Möller E, Abrams JS. Similar frequencies and kinetics of cytokine producing cells in murine peripheral blood and spleen. Cytokine detection by immunoassay and intracellular immunostaining. J Immunol Methods. 1993 Dec 3;166(2):201-14.

Starnes HF, Pearce M, Yim J, Abrams J, Tewari A, Zou J. Anti-IL-6 monoclonal antibodies protect against lethal Escherichia coli infection and lethal tumor necrosis factor-alpha challenge in mice. J Immunol. 1992 Mar 15;148(6):1968.

Related Products

00-4202 ELISA Diluent Solution (5X)

00-4203 Super AquaBlue ELISA Substrate

13-7062 Anti-Mouse IL-6 Biotin (MP5-32C11)

14-8061 Mouse IL-6 Recombinant Protein

18-4100 Avidin HRP

44-2404 Nunc MaxiSorp® flat-bottom 96 well plate

88-7064 Mouse IL-6 ELISA Ready-SET-Go!®

